

Product datasheet for **TA500053AM**

Carboxypeptidase A (CPA1) Mouse Monoclonal Antibody (Biotin conjugated) [Clone ID: OTI2A3]

Product data:

Product Type:	Primary Antibodies
Clone Name:	OTI2A3
Applications:	IF, IHC, WB
Recommended Dilution:	WB: 1:1000, IHC 1:50, IF (1:100)
Reactivity:	Human
Host:	Mouse
Isotype:	IgG2a
Clonality:	Monoclonal
Immunogen:	Recombinant protein expressed in E.coli corresponding to amino acids 1-419 of human CPA-1
Formulation:	PBS (pH 7.3) containing 1% BSA, 50% glycerol and 0.02% sodium azide.
Concentration:	0.5 mg/ml
Purification:	Purified from mouse ascites fluids or tissue culture supernatant by affinity chromatography (protein A/G)
Conjugation:	Biotin
Storage:	Store at -20°C as received.
Stability:	Stable for 12 months from date of receipt.
Predicted Protein Size:	45.5 kDa
Gene Name:	carboxypeptidase A1
Database Link:	NP_001859 Entrez Gene 1357 Human P15085
Background:	Three different forms of human pancreatic procarboxypeptidase A have been isolated. The A1 and A2 forms are monomeric proteins with different biochemical properties. Carboxypeptidase A1 is a monomeric pancreatic exopeptidase. It is involved in zymogen inhibition

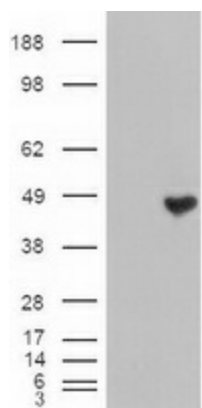


[View online »](#)

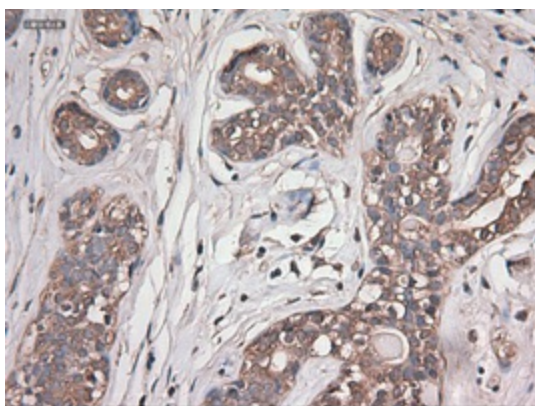
Synonyms: CPA

Protein Families: Druggable Genome, ES Cell Differentiation/IPS, Protease, Secreted Protein

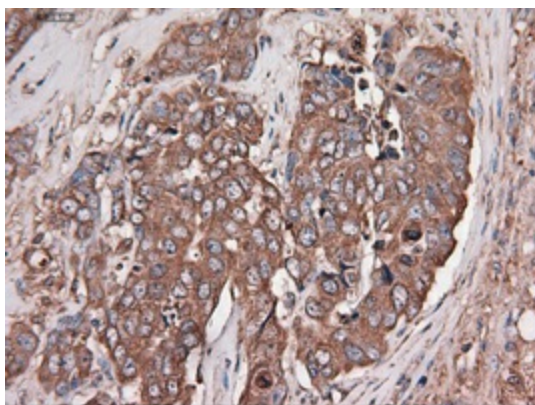
Product images:



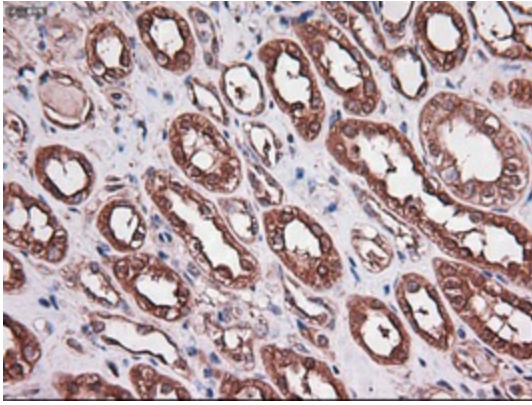
HEK293T cells were transfected with the pCMV6-ENTRY control (Cat# [PS100001], Left lane) or pCMV6-ENTRY CPA1 (Cat# [RC202720], Right lane) cDNA for 48 hrs and lysed. Equivalent amounts of cell lysates (5 ug per lane) were separated by SDS-PAGE and immunoblotted with anti-CPA1 (Cat# [TA500053]). Positive lysates [LY419696] (100ug) and [LC419696] (20ug) can be purchased separately from OriGene.



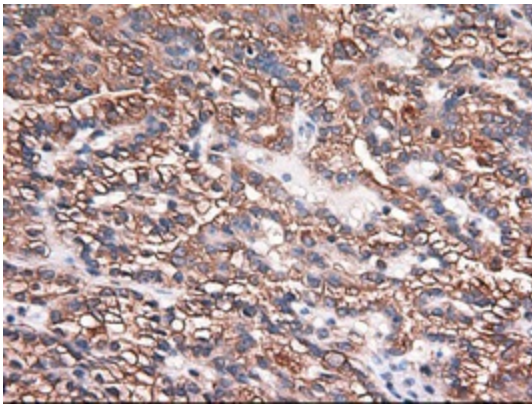
Immunohistochemical staining of paraffin-embedded breast within the normal limits using anti-CPA1 ([TA500053]) mouse monoclonal antibody (Heat-induced epitope retrieval by 10mM citric buffer, pH6.0, 100°C for 10min).



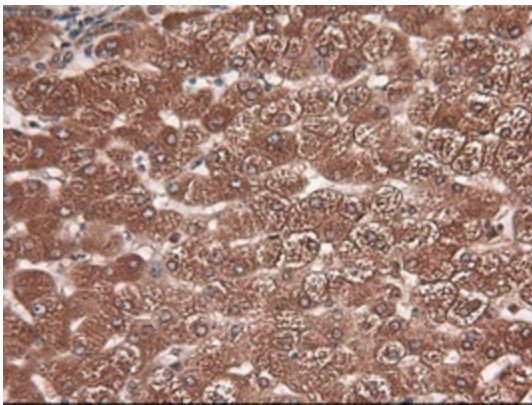
Immunohistochemical staining of paraffin-embedded Adenocarcinoma of breast using anti-CPA1 ([TA500053]) mouse monoclonal antibody (Heat-induced epitope retrieval by 10mM citric buffer, pH6.0, 100°C for 10min).



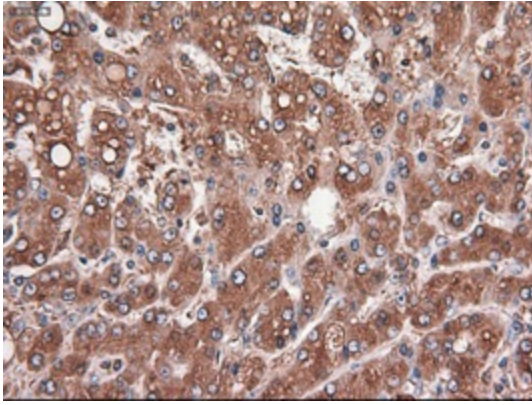
Immunohistochemical staining of paraffin-embedded kidney within the normal limits using anti-CPA1 ([TA500053]) mouse monoclonal antibody (Heat-induced epitope retrieval by 10mM citric buffer, pH6.0, 100°C for 10min).



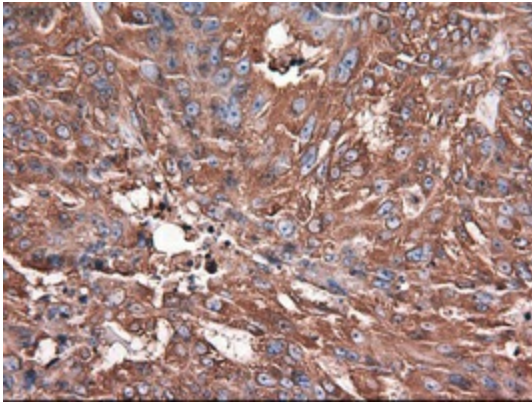
Immunohistochemical staining of paraffin-embedded Carcinoma of kidney using anti-CPA1 ([TA500053]) mouse monoclonal antibody (Heat-induced epitope retrieval by 10mM citric buffer, pH6.0, 100°C for 10min).



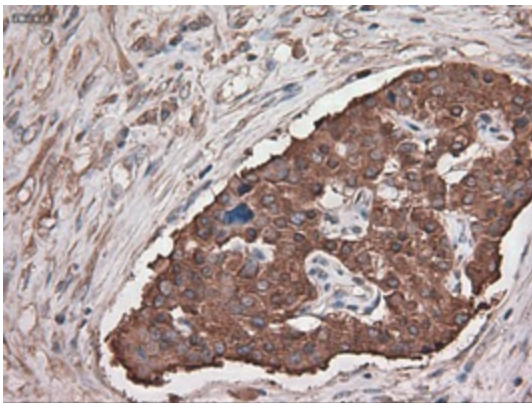
Immunohistochemical staining of paraffin-embedded liver within the normal limits using anti-CPA1 ([TA500053]) mouse monoclonal antibody (Heat-induced epitope retrieval by 10mM citric buffer, pH6.0, 100°C for 10min).



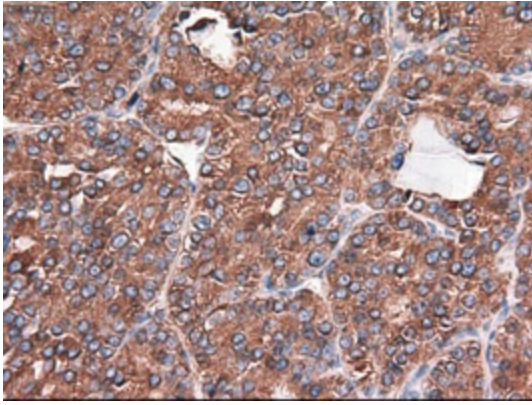
Immunohistochemical staining of paraffin-embedded Carcinoma of liver using anti-CPA1 ([TA500053]) mouse monoclonal antibody (Heat-induced epitope retrieval by 10mM citric buffer, pH6.0, 100°C for 10min).



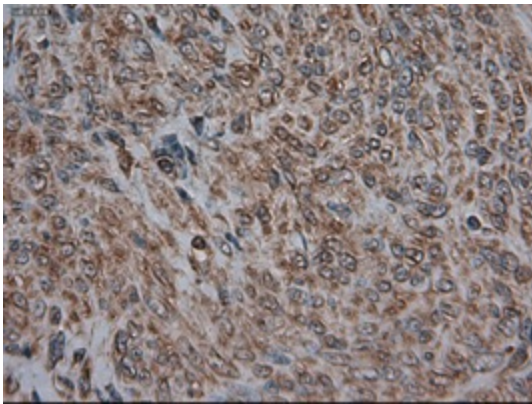
Immunohistochemical staining of paraffin-embedded Adenocarcinoma of ovary using anti-CPA1 ([TA500053]) mouse monoclonal antibody (Heat-induced epitope retrieval by 10mM citric buffer, pH6.0, 100°C for 10min).



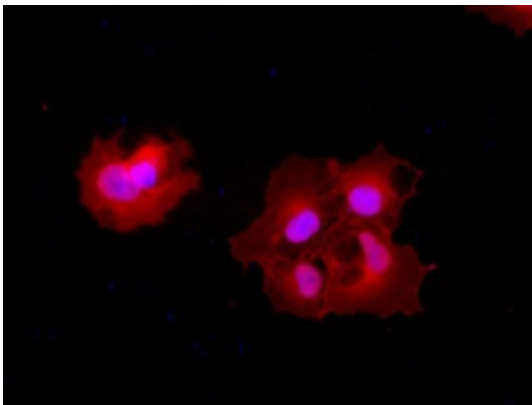
Immunohistochemical staining of paraffin-embedded Carcinoma of pancreas using anti-CPA1 ([TA500053]) mouse monoclonal antibody (Heat-induced epitope retrieval by 10mM citric buffer, pH6.0, 100°C for 10min).



Immunohistochemical staining of paraffin-embedded Carcinoma of thyroid using anti-CPA1 ([TA500053]) mouse monoclonal antibody (Heat-induced epitope retrieval by 10mM citric buffer, pH6.0, 100°C for 10min).



Immunohistochemical staining of paraffin-embedded endometrium within the normal limits using anti-CPA1 ([TA500053]) mouse monoclonal antibody (Heat-induced epitope retrieval by 10mM citric buffer, pH6.0, 100°C for 10min).



Anti-CPA1 mouse monoclonal antibody ([TA500053]) immunofluorescent staining (Red) of COS7 cells transiently transfected by pCMV6-ENTRY CPA1 ([RC202720]).