

Product datasheet for **TA500043BM**

JNK1 (MAPK8) Mouse Monoclonal Antibody (HRP conjugated) [Clone ID: OTI1C2]

Product data:

Product Type:	Primary Antibodies
Clone Name:	OTI1C2
Applications:	IF, WB
Recommended Dilution:	WB 1:500~1000, IF 1:100
Reactivity:	Human, Mouse, Rat
Host:	Mouse
Isotype:	IgG2a
Clonality:	Monoclonal
Immunogen:	Human recombinant protein fragment corresponding to amino acids 1-384 of human JNK1 (NP_002741) produced in E.coli.
Formulation:	PBS (pH 7.3) containing 1% BSA, 50% glycerol.
Concentration:	0.5 mg/ml
Purification:	Purified from mouse ascites fluids or tissue culture supernatant by affinity chromatography (protein A/G)
Conjugation:	HRP
Storage:	Store at -20°C as received.
Stability:	Stable for 12 months from date of receipt.
Predicted Protein Size:	44.0 kDa
Gene Name:	mitogen-activated protein kinase 8
Database Link:	NP_002741 Entrez Gene 26419 Mouse Entrez Gene 116554 Rat Entrez Gene 5599 Human P45983



[View online »](#)

Background:

JNK1 is a member of the MAP kinase family. MAP kinases act as an integration point for multiple biochemical signals, and are involved in a wide variety of cellular processes such as proliferation, differentiation, transcription regulation and development. JNK1 is activated by various cell stimuli, and targets specific transcription factors, and thus mediates immediate-early gene expression in response to cell stimuli. The activation of JNK1 by tumor-necrosis factor alpha (TNF-alpha) is found to be required for TNF-alpha induced apoptosis. JNK1 is also involved in UV radiation induced apoptosis, which is thought to be related to cytochrom c-mediated cell death pathway. Studies of the mouse counterpart of JNK1 gene suggested that it play a key role in T cell proliferation, apoptosis and differentiation. Four alternatively spliced transcript variants encoding distinct isoforms have been reported.

Synonyms:

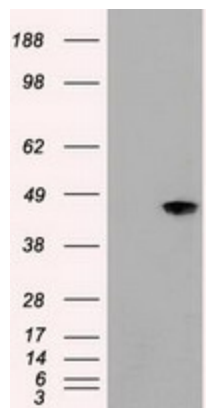
JNK; JNK-46; JNK1; JNK1A2; JNK21B1/2; PRKM8; SAPK1; SAPK1c

Protein Families:

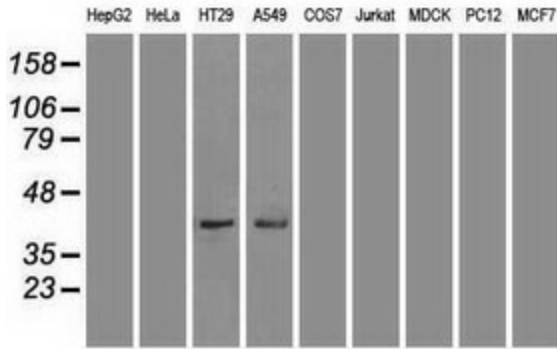
Druggable Genome, ES Cell Differentiation/IPS, Protein Kinase

Protein Pathways:

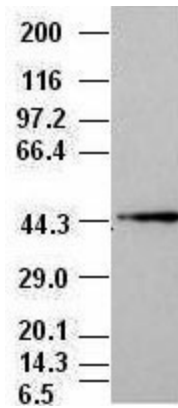
Adipocytokine signaling pathway, Colorectal cancer, Epithelial cell signaling in Helicobacter pylori infection, ErbB signaling pathway, Fc epsilon RI signaling pathway, Focal adhesion, GnRH signaling pathway, Insulin signaling pathway, MAPK signaling pathway, Neurotrophin signaling pathway, NOD-like receptor signaling pathway, Pancreatic cancer, Pathways in cancer, Progesterone-mediated oocyte maturation, RIG-I-like receptor signaling pathway, Toll-like receptor signaling pathway, Type II diabetes mellitus, Wnt signaling pathway

Product images:

HEK293T cells were transfected with the pCMV6-ENTRY control (Left lane) or pCMV6-ENTRY JNK1 ([RC218407], Right lane) cDNA for 48 hrs and lysed. Equivalent amounts of cell lysates (5 ug per lane) were separated by SDS-PAGE and immunoblotted with anti-JNK1 ([TA500043]). Positive lysates [LY400970] (100ug) and [LC400970] (20ug) can be purchased separately from OriGene.



Western blot analysis of extracts (35ug) from 9 different cell lines by using anti-JNK1 monoclonal antibody.



JNK1 antibody (1C2) at 1:1000 + NIH/3T3 cell lysate



Anti-JNK1 mouse monoclonal antibody ([TA500043]) immunofluorescent staining of COS7 cells transiently transfected by pCMV6-ENTRY JNK1 ([RC218407]).