

## Product datasheet for **TA500042AM**

### VEGFA Mouse Monoclonal Antibody (Biotin conjugated) [Clone ID: OTI4G3]

#### Product data:

Product Type:	Primary Antibodies
Clone Name:	OTI4G3
Applications:	WB
Recommended Dilution:	WB 1:2500~5000
Reactivity:	Human, Dog
Host:	Mouse
Isotype:	IgG2b
Clonality:	Monoclonal
Immunogen:	Human recombinant protein fragment corresponding to amino acids 27-233 of human VEGFA (NP_003367) produced in E.coli.
Concentration:	0.5 mg/ml
Purification:	Purified from mouse ascites fluids or tissue culture supernatant by affinity chromatography (protein A/G)
Conjugation:	Biotin
Storage:	Store at -20°C as received.
Stability:	Stable for 12 months from date of receipt.
Predicted Protein Size:	23.8 kDa
Gene Name:	vascular endothelial growth factor A
Database Link:	<a href="#">NP_001020537</a> <a href="#">Entrez Gene 403802 Dog</a> <a href="#">Entrez Gene 7422 Human</a> <a href="#">P15692</a>
Background:	VEGF is a member of the PDGF/VEGF growth factor family that is often found as a disulfide linked homodimer. It is a glycosylated mitogen that specifically acts on endothelial cells and has various effects, including mediating increased vascular permeability, inducing angiogenesis, vasculogenesis and endothelial cell growth, promoting cell migration, and inhibiting apoptosis. Elevated levels of this protein is linked to POEMS syndrome, also known as Crow-Fukase syndrome. Mutations in VEGF gene have been associated with proliferative and nonproliferative diabetic retinopathy.



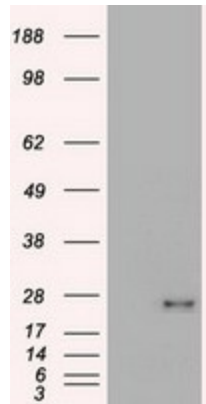
[View online »](#)

**Synonyms:** MVCD1; VEGF; VPF

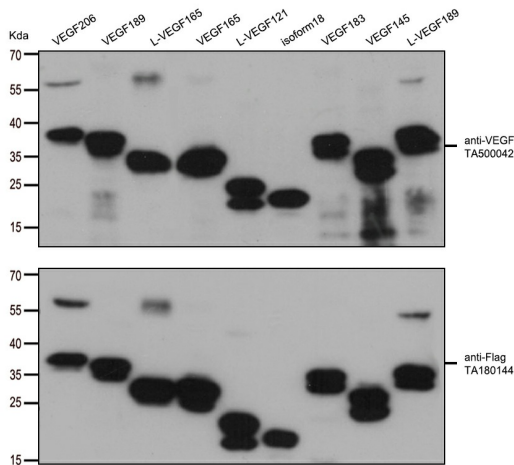
**Protein Families:** Druggable Genome, Secreted Protein

**Protein Pathways:** Bladder cancer, Cytokine-cytokine receptor interaction, Focal adhesion, mTOR signaling pathway, Pancreatic cancer, Pathways in cancer, Renal cell carcinoma, VEGF signaling pathway

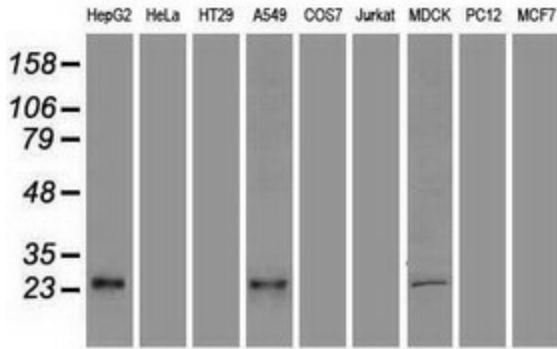
**Product images:**



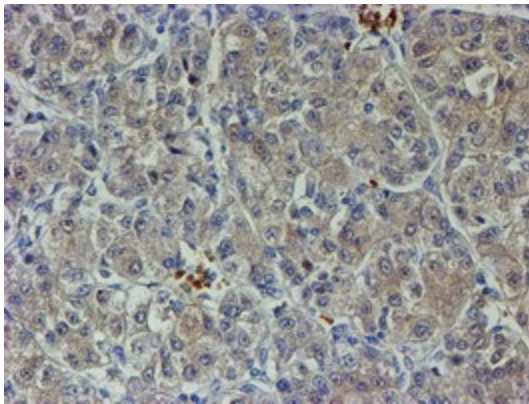
HEK293T cells were transfected with the pCMV6-ENTRY control (Left lane) or pCMV6-ENTRY VEGF ([RC223789], Right lane) cDNA for 48 hrs and lysed. Equivalent amounts of cell lysates (5 ug per lane) were separated by SDS-PAGE and immunoblotted with anti-VEGF.



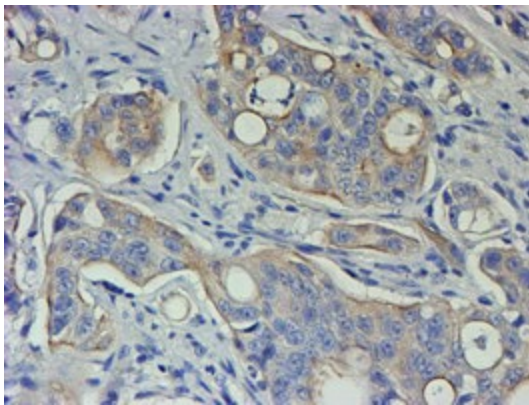
HEK293T cells were transfected with the overexpression plasmids of 9 VEGF isoforms (from left to right: VEGF206, [RC223789]; VEGF189, [RC229706]; L-VEGF165, [RC223884]; VEGF165, [RC229662]; L-VEGF121, [RC222129]; VEGF iso18, [RC229874]; VEGF183, [RC229686]; VEGF145, [RC231952]; L-VEGF189, [RC224244]) for 48 hrs and lysed. Equivalent amounts of cell lysates (5 ug per lane) were separated by SDS-PAGE and immunoblotted with anti-flag antibody ([TA180144], 1:1000) or anti-VEGFA mouse monoclonal antibody. ([TA500042], 1:500)



Western blot analysis of extracts (35ug) from 9 different cell lines by using anti-VEGF monoclonal antibody.



Immunohistochemical staining of paraffin-embedded Carcinoma of Human liver tissue using anti-VEGF mouse monoclonal antibody. (TA500042)



Immunohistochemical staining of paraffin-embedded Carcinoma of Human pancreas tissue using anti-VEGF mouse monoclonal antibody. (TA500042)