

## Product datasheet for **TA500039M**

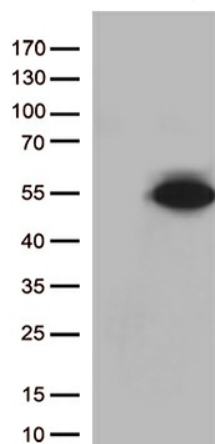
### **PDX1 Mouse Monoclonal Antibody [Clone ID: OTI5D5]**

#### **Product data:**

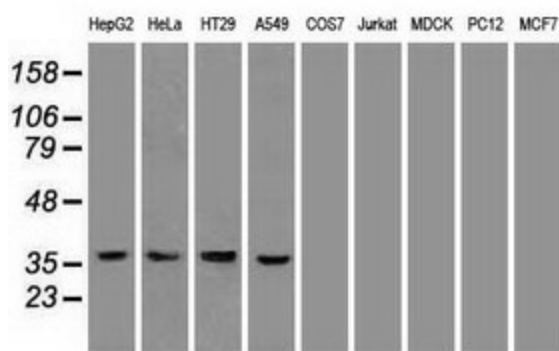
Product Type:	Primary Antibodies
Clone Name:	OTI5D5
Applications:	WB
Recommended Dilution:	WB 1:5000~10000
Reactivity:	Human, Mouse, Rat
Host:	Mouse
Isotype:	IgG1
Clonality:	Monoclonal
Immunogen:	Full length human recombinant protein of human PDX1 (NP_000200) produced in E.coli.
Formulation:	PBS (pH 7.3) containing 1% BSA, 50% glycerol and 0.02% sodium azide.
Concentration:	1 mg/ml
Purification:	Purified from mouse ascites fluids or tissue culture supernatant by affinity chromatography (protein A/G)
Conjugation:	Unconjugated
Storage:	Store at -20°C as received.
Stability:	Stable for 12 months from date of receipt.
Predicted Protein Size:	30.6 kDa
Gene Name:	pancreatic and duodenal homeobox 1
Database Link:	<a href="#">NP_000200</a> <a href="#">Entrez Gene 18609 Mouse</a> <a href="#">Entrez Gene 29535 Rat</a> <a href="#">Entrez Gene 3651 Human</a> <a href="#">P52945</a>
Background:	Pdx1 is a transcriptional activator of several genes, including insulin, somatostatin, glucokinase, islet amyloid polypeptide, and glucose transporter type 2. It is involved in the early development of the pancreas and plays a major role in glucose-dependent regulation of insulin gene expression. Defects in PDX1 gene are a cause of pancreatic agenesis, which can lead to early-onset insulin-dependent diabetes mellitus (NIDDM), as well as maturity onset diabetes of the young type 4 (MODY4).


[View online »](#)

<b>Synonyms:</b>	GSF; IDX-1; IPF1; IUF1; MODY4; PAGEN1; PDX-1; STF-1
<b>Protein Families:</b>	Embryonic stem cells, ES Cell Differentiation/IPS, Induced pluripotent stem cells, Transcription Factors
<b>Protein Pathways:</b>	Maturity onset diabetes of the young, Type II diabetes mellitus

**Product images:**


HEK293T cells were transfected with the pCMV6-ENTRY control (Left lane) or pCMV6-ENTRY PDX1 ([RC222354], Right lane) cDNA for 48 hrs and lysed. Equivalent amounts of cell lysates (5 ug per lane) were separated by SDS-PAGE and immunoblotted with anti-PDX1 (1:500).



Western blot analysis of extracts (35ug) from 9 different cell lines by using anti-PDX1 monoclonal antibody.