

## Product datasheet for **TA500038**

### **PDX1 Mouse Monoclonal Antibody [Clone ID: OTI2A12]**

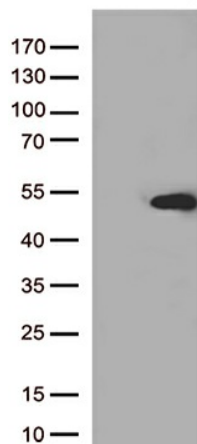
#### **Product data:**

Product Type:	Primary Antibodies
Clone Name:	OTI2A12
Applications:	IF, IHC, WB
Recommended Dilution:	WB 1:20000, IHC 1:50, IF 1:50~100
Reactivity:	Human, Mouse, Rat
Host:	Mouse
Isotype:	IgG1
Clonality:	Monoclonal
Immunogen:	Full length human recombinant protein of human PDX1 (NP_000200) produced in E.coli.
Formulation:	PBS (pH 7.3) containing 1% BSA, 50% glycerol and 0.02% sodium azide.
Concentration:	1 mg/ml
Purification:	Purified from mouse ascites fluids or tissue culture supernatant by affinity chromatography (protein A/G)
Conjugation:	Unconjugated
Storage:	Store at -20°C as received.
Stability:	Stable for 12 months from date of receipt.
Predicted Protein Size:	30.6 kDa
Gene Name:	pancreatic and duodenal homeobox 1
Database Link:	<a href="#">NP_000200</a> <a href="#">Entrez Gene 18609 Mouse</a> <a href="#">Entrez Gene 29535 Rat</a> <a href="#">Entrez Gene 3651 Human</a> <a href="#">P52945</a>
Background:	Pdx1 is a transcriptional activator of several genes, including insulin, somatostatin, glucokinase, islet amyloid polypeptide, and glucose transporter type 2. It is involved in the early development of the pancreas and plays a major role in glucose-dependent regulation of insulin gene expression. Defects in PDX1 gene are a cause of pancreatic agenesis, which can lead to early-onset insulin-dependent diabetes mellitus (NIDDM), as well as maturity onset diabetes of the young type 4 (MODY4).

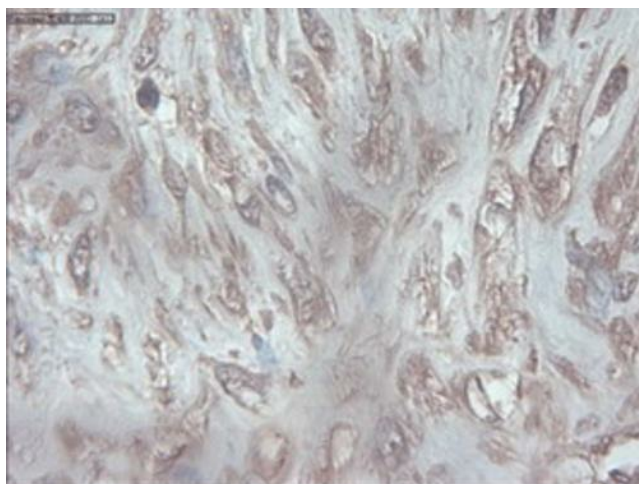


[View online »](#)

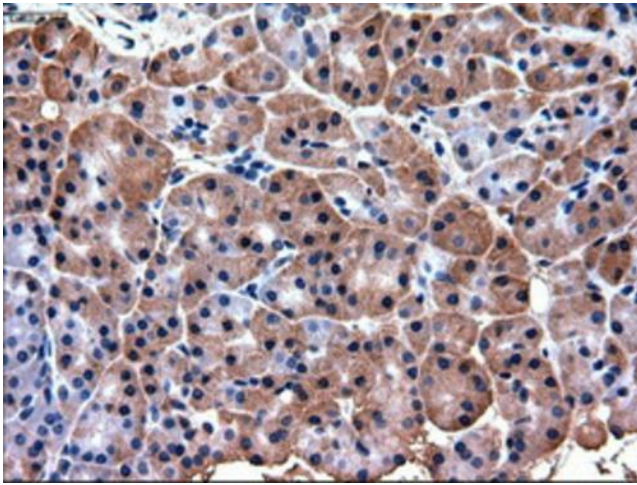
<b>Synonyms:</b>	GSF; IDX-1; IPF1; IUF1; MODY4; PAGEN1; PDX-1; STF-1
<b>Protein Families:</b>	Embryonic stem cells, ES Cell Differentiation/IPS, Induced pluripotent stem cells, Transcription Factors
<b>Protein Pathways:</b>	Maturity onset diabetes of the young, Type II diabetes mellitus

**Product images:**

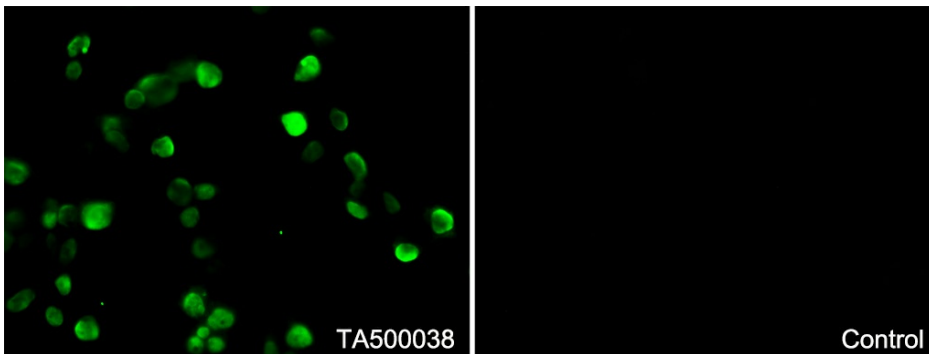
HEK293T cells were transfected with the pCMV6-ENTRY control (Cat# [PS100001], Left lane) or pCMV6-ENTRY PDX1 (Cat# [RC222354], Right lane) cDNA for 48 hrs and lysed. Equivalent amounts of cell lysates (5 ug per lane) were separated by SDS-PAGE and immunoblotted with anti-PDX1 (Cat# TA500038).



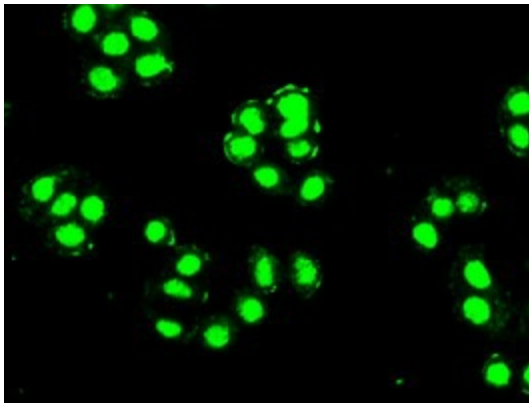
Immunohistochemical staining of paraffin-embedded Carcinoma of Human pancreas tissue using anti-PDX1 mouse monoclonal antibody. Heat-induced epitope retrieval by EDTA solution buffer pH 8.0 at 120°C for 3 min.



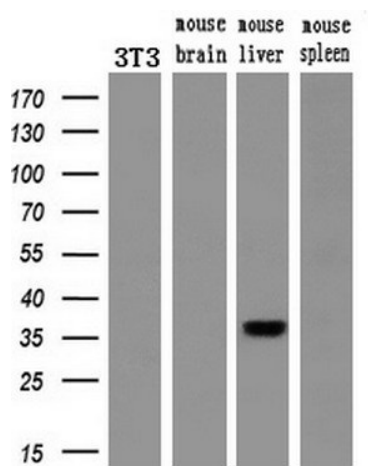
Immunohistochemical staining of paraffin-embedded Human pancreas tissue within the normal limits using anti-PDX1 mouse monoclonal antibody. Heat-induced epitope retrieval by EDTA solution buffer pH 8.0 at 120°C for 3 min.



Immunofluorescent staining of 293T cells transfected by pCMV6-ENTRY PDX1 ([RC222354]) using anti-PDX1 antibody (TA500038/green, left). 293T cells transfected with empty vector served as a negative control (right) (1:100).



Immunofluorescent staining of HT29 cells using anti-PDX1 mouse monoclonal antibody (TA500038).



Western blot analysis of extracts (10ug) from a mouse cell line and 3 different mouse tissues by using anti-PDX1 monoclonal antibody (1:200).