

## Product datasheet for **TA500034AM**

### Neurotrophin 4 (NTF4) Mouse Monoclonal Antibody (Biotin conjugated) [Clone ID: OTI2E8]

#### Product data:

Product Type:	Primary Antibodies
Clone Name:	OTI2E8
Applications:	IF, IHC, WB
Recommended Dilution:	WB 1:5000, IHC 1:50, IF 1:50
Reactivity:	Human, Mouse, Rat
Host:	Mouse
Isotype:	IgG1
Clonality:	Monoclonal
Immunogen:	Human recombinant protein fragment corresponding to amino acids 81-210 human NT4 (NP_006170) produced in E.coli.
Concentration:	0.5 mg/ml
Purification:	Purified from mouse ascites fluids or tissue culture supernatant by affinity chromatography (protein A/G)
Conjugation:	Biotin
Storage:	Store at -20°C as received.
Stability:	Stable for 12 months from date of receipt.
Predicted Protein Size:	22.2 kDa
Gene Name:	neurotrophin 4
Database Link:	<a href="#">NP_006170</a> <a href="#">Entrez Gene 25730 Rat</a> <a href="#">Entrez Gene 4909 Human</a> <a href="#">P34130</a>
Background:	NT4 is a member of a family of neurotrophic factors, neurotrophins, that control survival and differentiation of mammalian neurons. The expression of NT4 is ubiquitous and less influenced by environmental signals. While knock-outs of other neurotrophins including nerve growth factor, brain-derived neurotrophic factor, and neurotrophin 3 prove lethal during early postnatal development, NT4-deficient mice only show minor cellular deficits and develop normally to adulthood.
Synonyms:	GLC10; GLC10; NT-4; NT-4/5; NT-5; NT4; NT5; NTF5

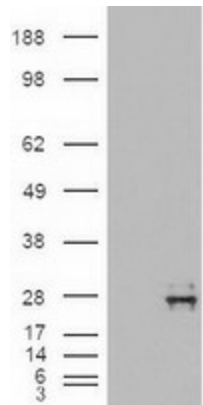


[View online »](#)

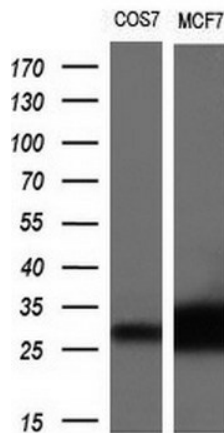
**Protein Families:** Druggable Genome, Secreted Protein

**Protein Pathways:** MAPK signaling pathway, Neurotrophin signaling pathway

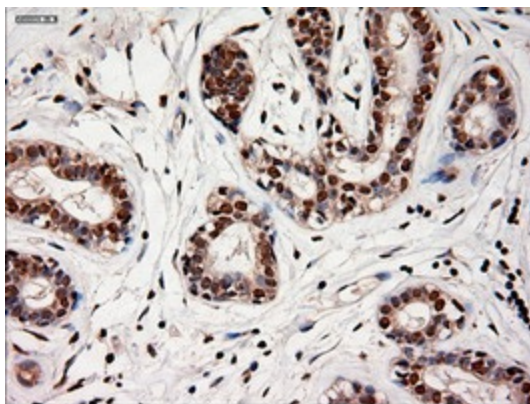
**Product images:**



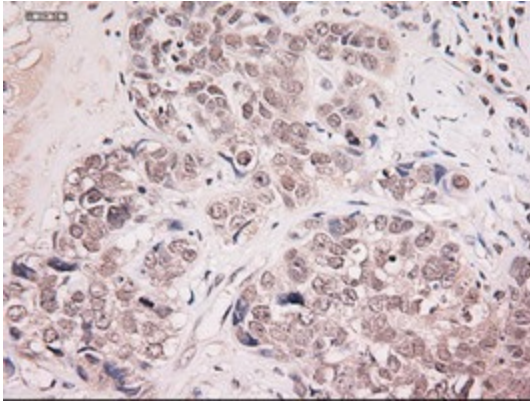
HEK293T cells were transfected with the pCMV6-ENTRY control (Cat# [PS100001], Left lane) or pCMV6-ENTRY NTF4 (Cat# [RC204535], Right lane) cDNA for 48 hrs and lysed. Equivalent amounts of cell lysates (5 ug per lane) were separated by SDS-PAGE and immunoblotted with anti-NTF4 (Cat# [TA500034]). Positive lysates [LY416817] (100ug) and [LC416817] (20ug) can be purchased separately from OriGene.



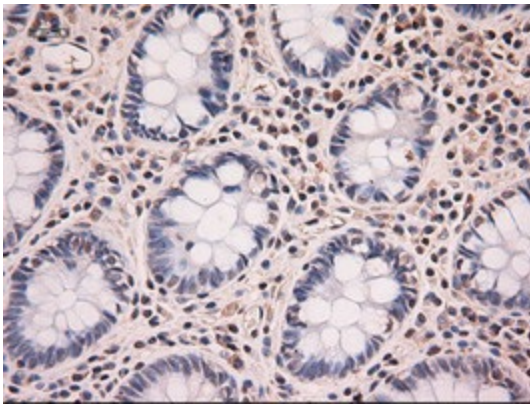
Western blot analysis of extracts (10ug) from 2 different cell lines by using anti-NTF4 monoclonal antibody at 1:200 dilution.



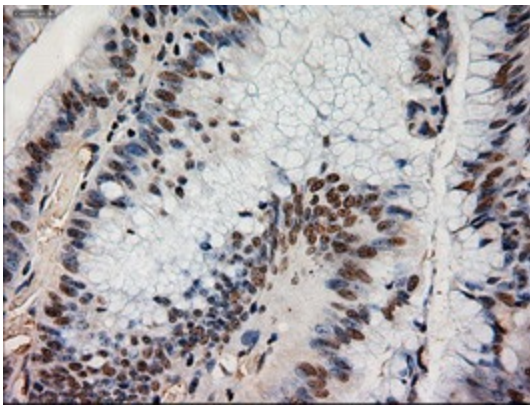
Immunohistochemical staining of paraffin-embedded Human breast tissue within the normal limits using anti-NTF4 mouse monoclonal antibody. (Heat-induced epitope retrieval by 10mM citric buffer, pH6.0, 100°C for 10min, [TA500034])



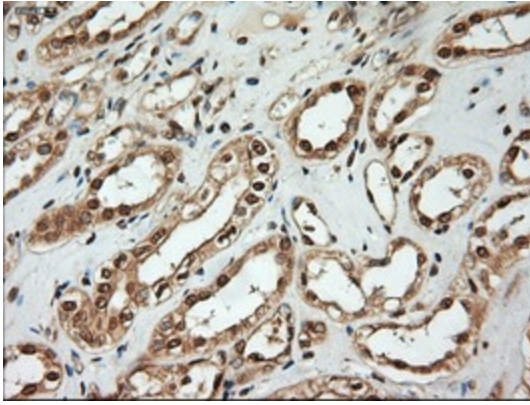
Immunohistochemical staining of paraffin-embedded Adenocarcinoma of Human breast tissue using anti-NTF4 mouse monoclonal antibody. (Heat-induced epitope retrieval by 10mM citric buffer, pH6.0, 100°C for 10min, [TA500034])



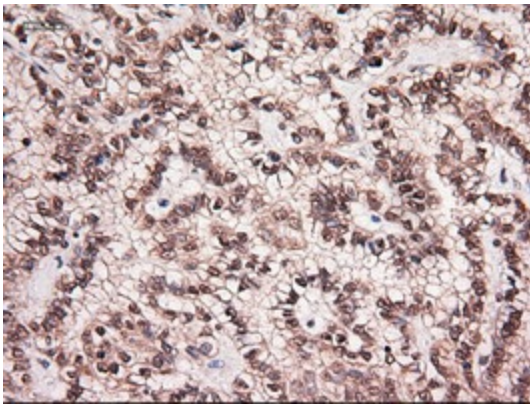
Immunohistochemical staining of paraffin-embedded Human colon tissue within the normal limits using anti-NTF4 mouse monoclonal antibody. (Heat-induced epitope retrieval by 10mM citric buffer, pH6.0, 100°C for 10min, [TA500034])



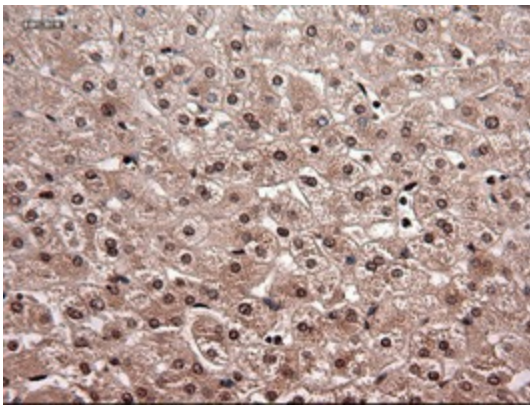
Immunohistochemical staining of paraffin-embedded Adenocarcinoma of Human colon tissue using anti-NTF4 mouse monoclonal antibody. (Heat-induced epitope retrieval by 10mM citric buffer, pH6.0, 100°C for 10min, [TA500034])



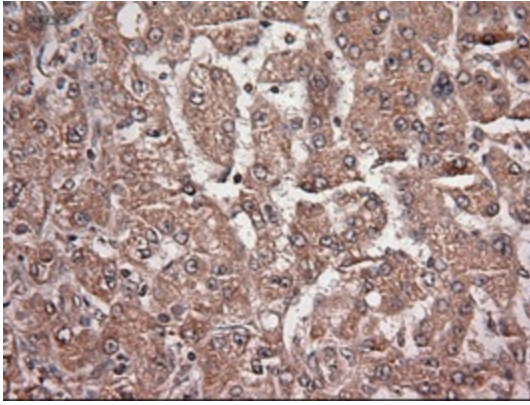
Immunohistochemical staining of paraffin-embedded Human Kidney tissue within the normal limits using anti-NTF4 mouse monoclonal antibody. (Heat-induced epitope retrieval by 10mM citric buffer, pH6.0, 100°C for 10min, [TA500034])



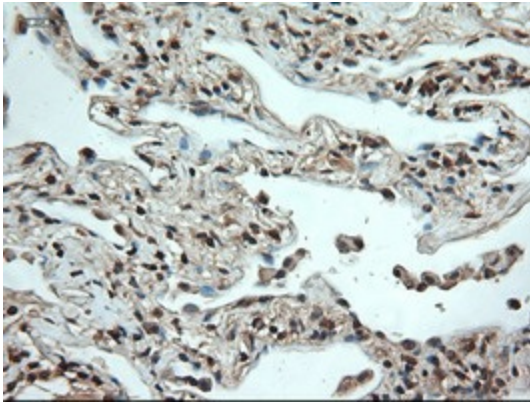
Immunohistochemical staining of paraffin-embedded Carcinoma of Human kidney tissue using anti-NTF4 mouse monoclonal antibody. (Heat-induced epitope retrieval by 10mM citric buffer, pH6.0, 100°C for 10min, [TA500034])



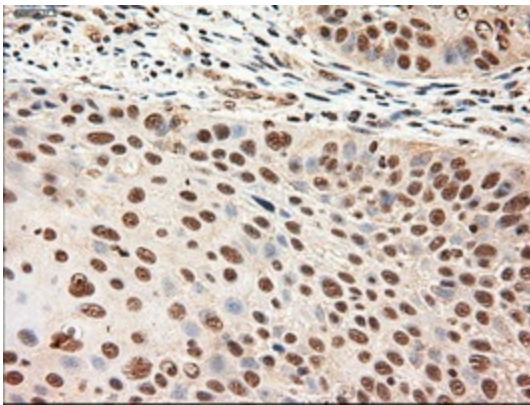
Immunohistochemical staining of paraffin-embedded Human liver tissue within the normal limits using anti-NTF4 mouse monoclonal antibody. (Heat-induced epitope retrieval by 10mM citric buffer, pH6.0, 100°C for 10min, [TA500034])



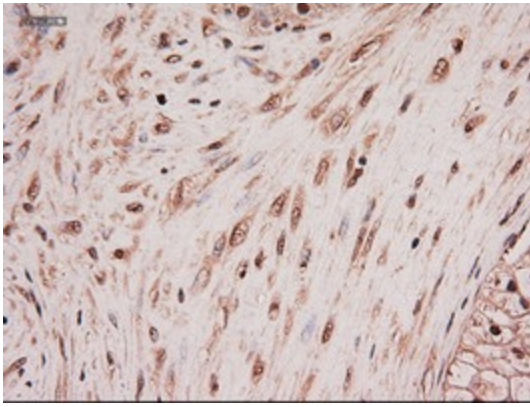
Immunohistochemical staining of paraffin-embedded Carcinoma of Human liver tissue using anti-NTF4 mouse monoclonal antibody. (Heat-induced epitope retrieval by 10mM citric buffer, pH6.0, 100°C for 10min, [TA500034])



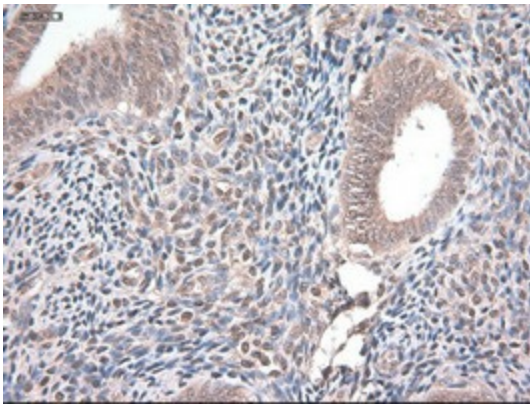
Immunohistochemical staining of paraffin-embedded Human lung tissue within the normal limits using anti-NTF4 mouse monoclonal antibody. (Heat-induced epitope retrieval by 10mM citric buffer, pH6.0, 100°C for 10min, [TA500034])



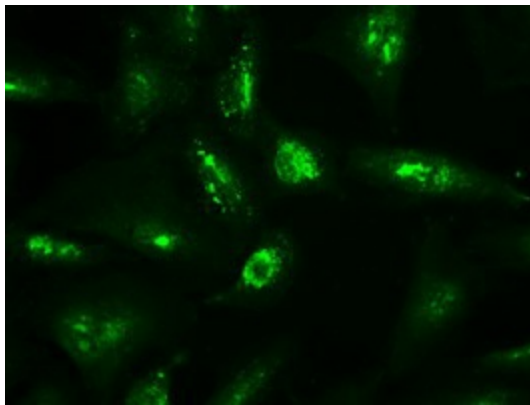
Immunohistochemical staining of paraffin-embedded Carcinoma of Human lung tissue using anti-NTF4 mouse monoclonal antibody. (Heat-induced epitope retrieval by 10mM citric buffer, pH6.0, 100°C for 10min, [TA500034])



Immunohistochemical staining of paraffin-embedded Carcinoma of Human pancreas tissue using anti-NTF4 mouse monoclonal antibody. (Heat-induced epitope retrieval by 10mM citric buffer, pH6.0, 100°C for 10min, [TA500034])



Immunohistochemical staining of paraffin-embedded Human endometrium tissue within the normal limits using anti-NTF4 mouse monoclonal antibody. (Heat-induced epitope retrieval by 10mM citric buffer, pH6.0, 100°C for 10min, [TA500034])



Immunofluorescent staining of A549 cells using anti-NTF4 mouse monoclonal antibody ([TA500034]).