

## Product datasheet for **TA500026BM**

### Hex (HHEX) Mouse Monoclonal Antibody (HRP conjugated) [Clone ID: OTI3C4]

#### Product data:

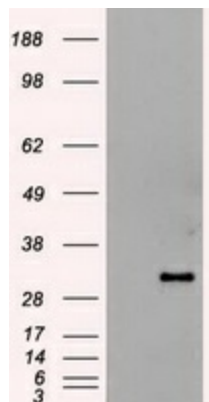
Product Type:	Primary Antibodies
Clone Name:	OTI3C4
Applications:	IF, WB
Recommended Dilution:	WB: 1:50 - 1:100, IF 1:100
Reactivity:	Human, Mouse, Rat
Host:	Mouse
Isotype:	IgG2a
Clonality:	Monoclonal
Immunogen:	Recombinant fragment expressed in E.coli corresponding to amino acids 100-270 of human Hex
Formulation:	PBS (pH 7.3) containing 1% BSA, 50% glycerol.
Concentration:	0.5 mg/ml
Purification:	Purified from mouse ascites fluids or tissue culture supernatant by affinity chromatography (protein A/G)
Conjugation:	HRP
Storage:	Store at -20°C as received.
Stability:	Stable for 12 months from date of receipt.
Predicted Protein Size:	29.8 kDa (experimental 44 kDa)
Gene Name:	hematopoietically expressed homeobox
Database Link:	<a href="#">NP_002720</a> <a href="#">Entrez Gene 15242 Mouse</a> <a href="#">Entrez Gene 79237 Rat</a> <a href="#">Entrez Gene 3087 Human</a> <a href="#">Q03014</a>
Background:	Hex is a member of the homeobox family of transcription factors, many of which are involved in developmental processes. Expression in specific hematopoietic lineages suggests that this protein may play a role in hematopoietic differentiation.
Synonyms:	HEX; HMPH; HOX11L-PEN; PRH; PRHX
Protein Families:	Druggable Genome, Transcription Factors



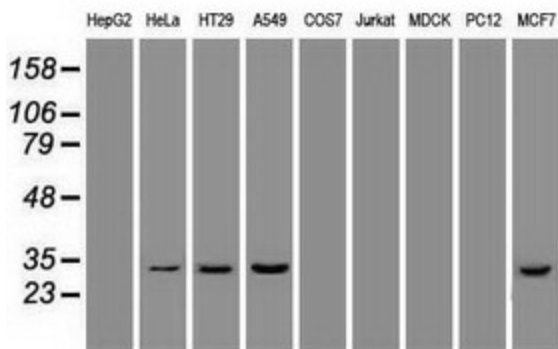
[View online »](#)

Protein Pathways: Maturity onset diabetes of the young

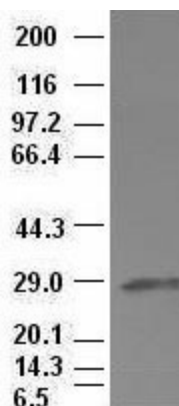
Product images:



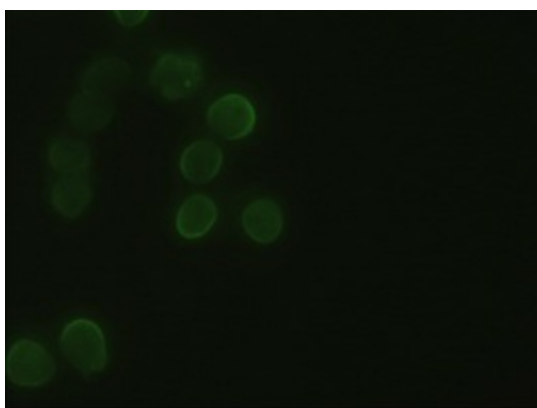
HEK293T cells were transfected with the pCMV6-ENTRY control (Left lane) or pCMV6-ENTRY HHex ([RC204815], Right lane) cDNA for 48 hrs and lysed. Equivalent amounts of cell lysates (5 ug per lane) were separated by SDS-PAGE and immunoblotted with anti-HHex. Positive lysates [LY419139] (100ug) and [LC419139] (20ug) can be purchased separately from OriGene.



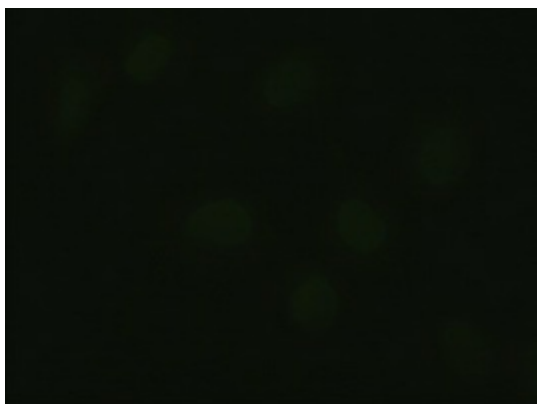
Western blot analysis of extracts (35ug) from 9 different cell lines by using anti-HHex monoclonal antibody at 1:50 dilution (HepG2: human; HeLa: human; SVT2: mouse; A549: human; COS7: monkey; Jurkat: human; MDCK: canine; PC12: rat; MCF7: human).



Hex antibody (3C4) at 1:100 dilution + Lysates from HEK-293T cells transfected with human Hex expression vector (Cat# [RC204815])



Anti-HHex mouse monoclonal antibody ([TA500026]) immunofluorescent staining of HeLa cells transiently transfected by pCMV6-ENTRY HHex ([RC204815])



Immunofluorescent staining of HeLa cells using anti-HHex mouse monoclonal antibody ([TA500026]).