

Product datasheet for **TA500025M**

Hex (HHEX) Mouse Monoclonal Antibody [Clone ID: OTI4B7]

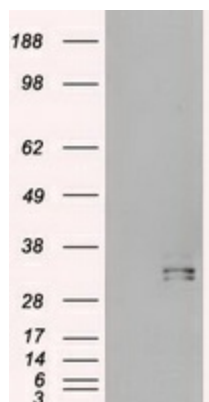
Product data:

| | |
|-------------------------|--|
| Product Type: | Primary Antibodies |
| Clone Name: | OTI4B7 |
| Applications: | WB |
| Recommended Dilution: | WB: 1:500 - 1:1000 |
| Reactivity: | Human, Mouse, Rat |
| Host: | Mouse |
| Isotype: | IgG1 |
| Clonality: | Monoclonal |
| Immunogen: | Recombinant fragment expressed in E.coli corresponding to amino acids 100-270 of human Hex |
| Formulation: | PBS (pH 7.3) containing 1% BSA, 50% glycerol and 0.02% sodium azide. |
| Concentration: | 1 mg/ml |
| Purification: | Purified from mouse ascites fluids or tissue culture supernatant by affinity chromatography (protein A/G) |
| Conjugation: | Unconjugated |
| Storage: | Store at -20°C as received. |
| Stability: | Stable for 12 months from date of receipt. |
| Predicted Protein Size: | 29.8 kDa (experimental 44 kDa) |
| Gene Name: | hematopoietically expressed homeobox |
| Database Link: | NP_002720 Entrez Gene 15242 Mouse Entrez Gene 79237 Rat Entrez Gene 3087 Human Q03014 |
| Background: | Hex is a member of the homeobox family of transcription factors, many of which are involved in developmental processes. Expression in specific hematopoietic lineages suggests that this protein may play a role in hematopoietic differentiation. |
| Synonyms: | HEX; HMPH; HOX11L-PEN; PRH; PRHX |
| Protein Families: | Druggable Genome, Transcription Factors |

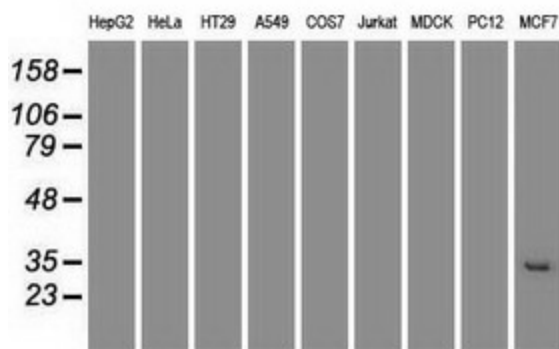

[View online »](#)

Protein Pathways: Maturity onset diabetes of the young

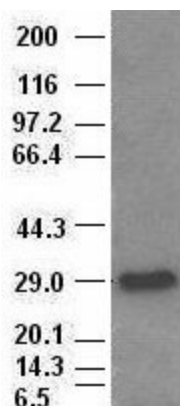
Product images:



HEK293T cells were transfected with the pCMV6-ENTRY control (Left lane) or pCMV6-ENTRY HHEX ([RC204815], Right lane) cDNA for 48 hrs and lysed. Equivalent amounts of cell lysates (5 ug per lane) were separated by SDS-PAGE and immunoblotted with anti-HHEX. Positive lysates [LY419139] (100ug) and [LC419139] (20ug) can be purchased separately from OriGene.



Western blot analysis of extracts (35ug) from 9 different cell lines by using anti-HHEX monoclonal antibody at 1:500 dilution (HepG2: human; HeLa: human; SVT2: mouse; A549: human; COS7: monkey; Jurkat: human; MDCK: canine; PC12: rat; MCF7: human).



Hex antibody (4B7) at 1:1000 with Lysates from HEK-293T cells transfected with human Hex expression vector (Cat# [RC204815])