

## Product datasheet for **TA500021M**

### Cytokeratin 8 (KRT8) Mouse Monoclonal Antibody [Clone ID: OTI1B12]

#### Product data:

Product Type:	Primary Antibodies
Clone Name:	OTI1B12
Applications:	IF, IHC, WB
Recommended Dilution:	WB 1:2500~5000, IHC 1:50 - 1:150, IF 1:50 - 1:100
Reactivity:	Human, Dog, Rat, Monkey, Mouse
Host:	Mouse
Isotype:	IgG2b
Clonality:	Monoclonal
Immunogen:	Human recombinant protein fragment corresponding to amino acids 91-381 of human CK8 (NP_002264) produced in E.coli.
Formulation:	PBS (pH 7.3) containing 1% BSA, 50% glycerol and 0.02% sodium azide.
Concentration:	1 mg/ml
Purification:	Purified from mouse ascites fluids or tissue culture supernatant by affinity chromatography (protein A/G)
Conjugation:	Unconjugated
Storage:	Store at -20°C as received.
Stability:	Stable for 12 months from date of receipt.
Predicted Protein Size:	53.5 kDa
Gene Name:	keratin 8
Database Link:	<a href="#">NP_002264</a> <a href="#">Entrez Gene 16691 Mouse</a> <a href="#">Entrez Gene 25626 Rat</a> <a href="#">Entrez Gene 486513 Dog</a> <a href="#">Entrez Gene 3856 Human</a> <a href="#">P05787</a>



[View online »](#)

**Background:**

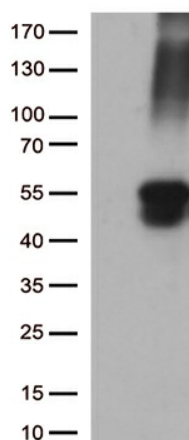
Keratin 8 is a member of the type II keratin family clustered on the long arm of chromosome 12. Type I and type II keratins heteropolymerize to form intermediate-sized filaments in the cytoplasm of epithelial cells. The product of this gene typically dimerizes with keratin 18 to form an intermediate filament in simple single-layered epithelial cells. This protein plays a role in maintaining cellular structural integrity and also functions in signal transduction and cellular differentiation. Mutations in this gene cause cryptogenic cirrhosis.

**Synonyms:**

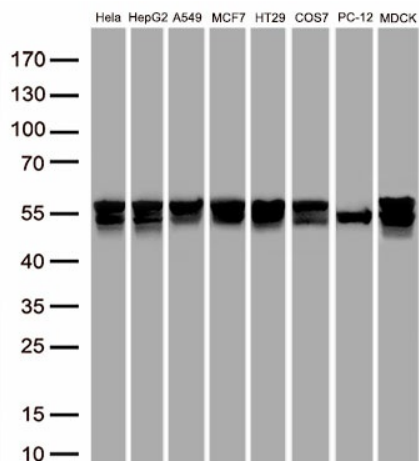
CARD2; CK-8; CK8; CYK8; K2C8; K8; KO

**Protein Families:**

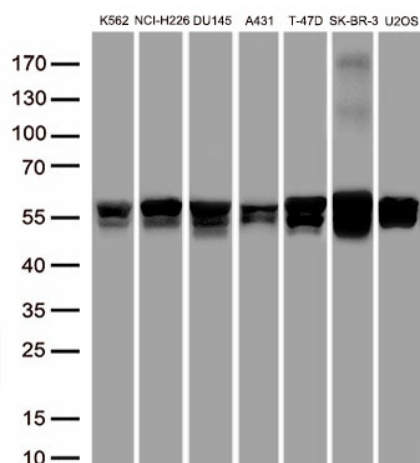
Druggable Genome

**Product images:**


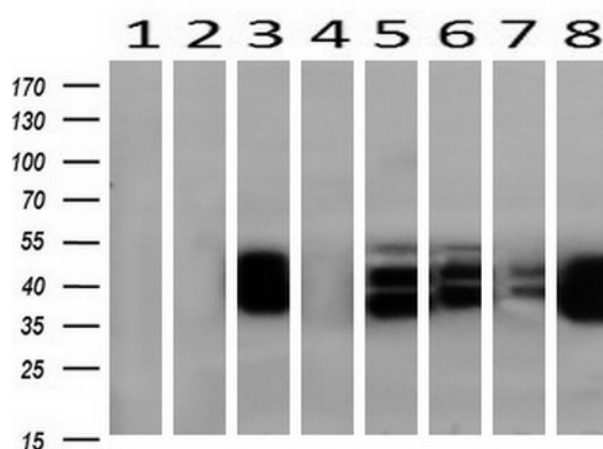
HEK293T cells were transfected with the pCMV6-ENTRY control (Cat# [PS100001], Left lane) or pCMV6-ENTRY KRT8 (Cat# [RC209570], Right lane) cDNA for 48 hrs and lysed. Equivalent amounts of cell lysates (5 ug per lane) were separated by SDS-PAGE and immunoblotted with anti-KRT8 (Cat# [TA500021])(1:500).



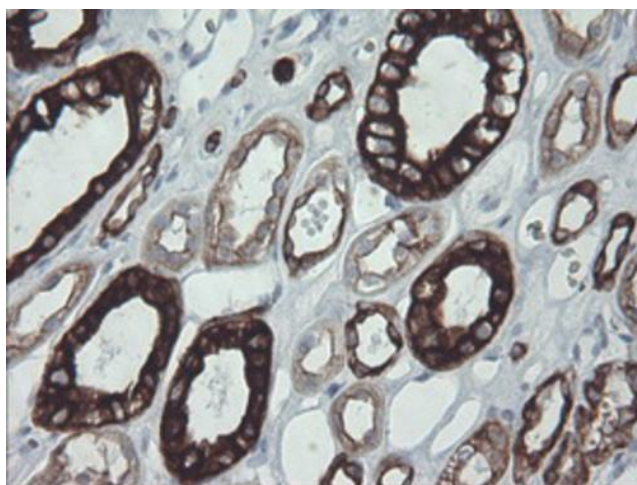
Western blot analysis of extracts (50ug per lane) from 8 cell lines lysates by using anti-KRT8 monoclonal antibody([TA500021], 1:2000)



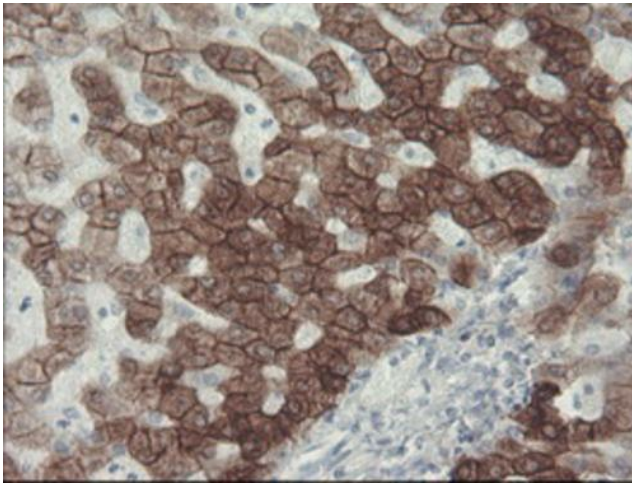
Western blot analysis of extracts (50ug per lane) from 7 cell lines lysates by using anti-KRT8 monoclonal antibody([TA500021], 1:2000)



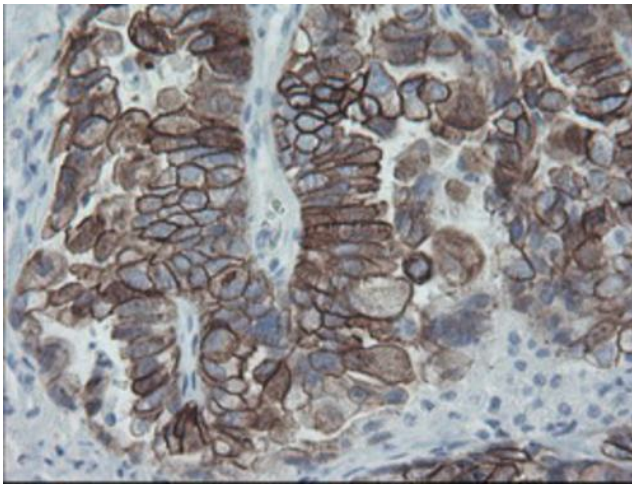
Western blot analysis of extracts (10ug) from 8 Human tissue by using anti-KRT8 monoclonal antibody at 1:1000 (1: Testis; 2: Uterus; 3: Breast; 4: Brain; 5: Liver; 6: Ovary; 7: Thyroid gland; 8: Colon).



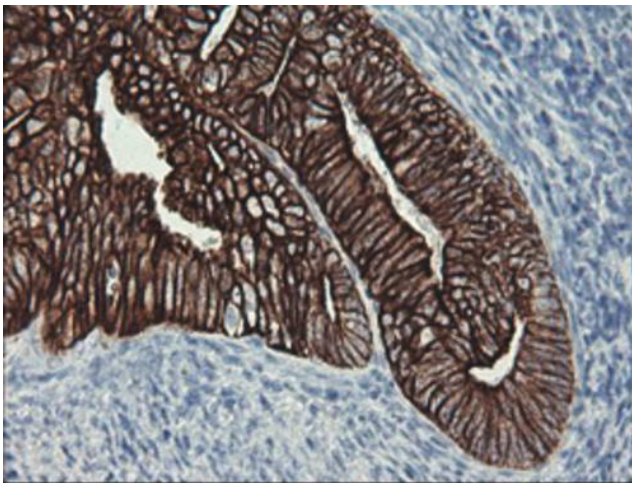
Immunohistochemical staining of paraffin-embedded Human Kidney tissue within the normal limits using anti-KRT8 mouse monoclonal antibody ([TA500021]) at 1:150 dilution. Heat-induced epitope retrieval by EDTA solution buffer pH 8.0 at 120°C for 3 min.



Immunohistochemical staining of paraffin-embedded Human liver tissue within the normal limits using anti-KRT8 mouse monoclonal antibody ([TA500021]) at 1:150 dilution. Heat-induced epitope retrieval by EDTA solution buffer pH 8.0 at 120°C for 3 min.

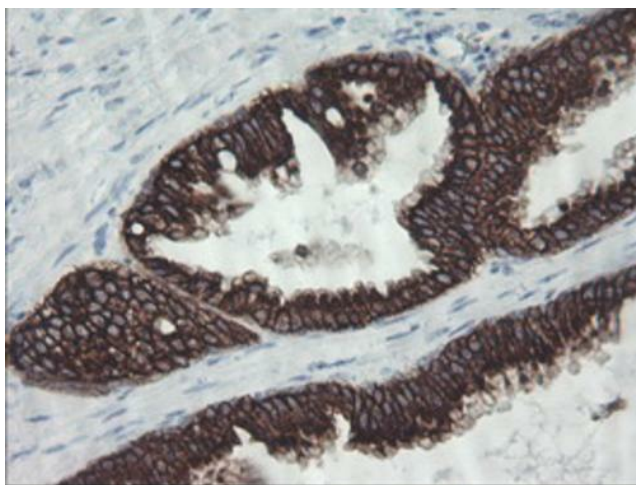


Immunohistochemical staining of paraffin-embedded Adenocarcinoma of Human ovary tissue using anti-KRT8 mouse monoclonal antibody ([TA500021]) at 1:150 dilution. Heat-induced epitope retrieval by EDTA solution buffer pH 8.0 at 120°C for 3 min.

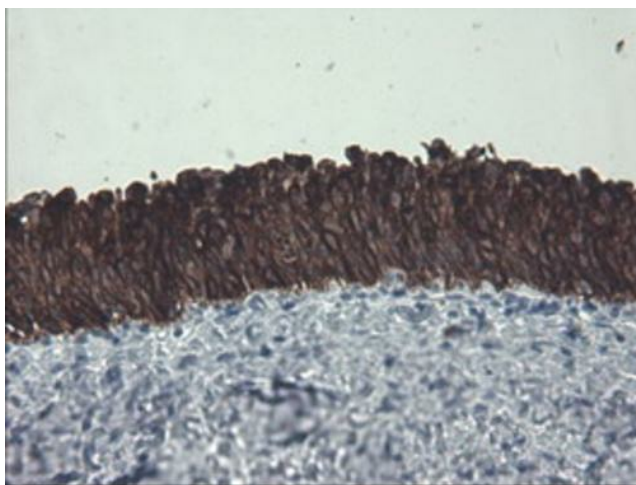


Immunohistochemical staining of paraffin-embedded Adenocarcinoma of Human endometrium tissue using anti-KRT8 mouse monoclonal antibody ([TA500021]) at 1:150 dilution. Heat-induced epitope retrieval by EDTA solution buffer pH 8.0 at 120°C for 3 min.

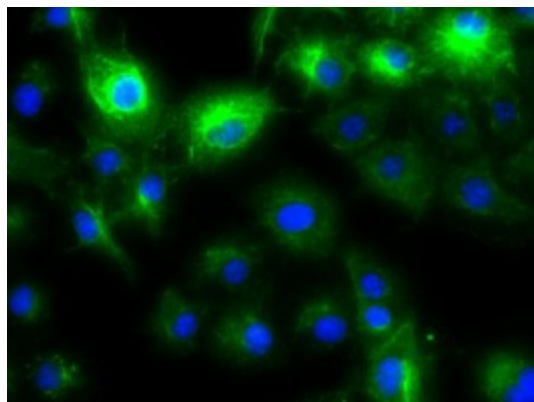




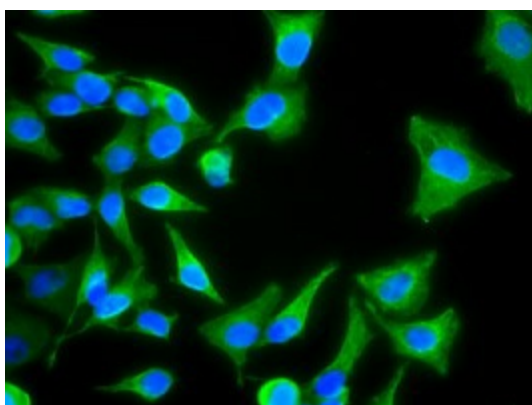
Immunohistochemical staining of paraffin-embedded Human prostate tissue within the normal limits using anti-KRT8 mouse monoclonal antibody ([TA500021]) at 1:150 dilution. Heat-induced epitope retrieval by EDTA solution buffer pH 8.0 at 120°C for 3 min.



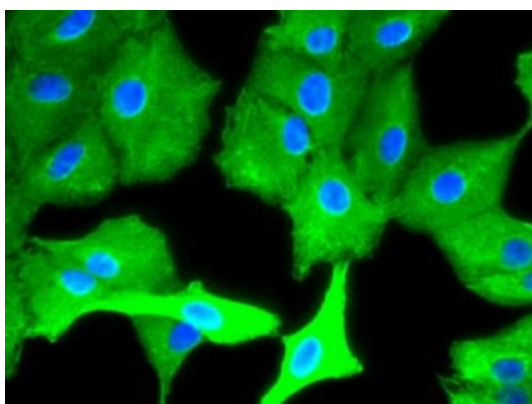
Immunohistochemical staining of paraffin-embedded Human bladder tissue within the normal limits using anti-KRT8 mouse monoclonal antibody ([TA500021]) at 1:150 dilution. Heat-induced epitope retrieval by EDTA solution buffer pH 8.0 at 120°C for 3 min.



Anti-KRT8 mouse monoclonal antibody ([TA500021]) immunofluorescent staining of COS7 cells transiently transfected by pCMV6-ENTRY KRT8 ([RC209570]).



Immunofluorescent staining of HeLa cells using anti-KRT8 mouse monoclonal antibody (TA500021).



Immunofluorescent staining of A549 cells using anti-KRT8 mouse monoclonal antibody (TA500021).