

Product datasheet for **TA500017AM**

Cytokeratin 18 (KRT18) Mouse Monoclonal Antibody (Biotin conjugated) [Clone ID: OTI1H10]

Product data:

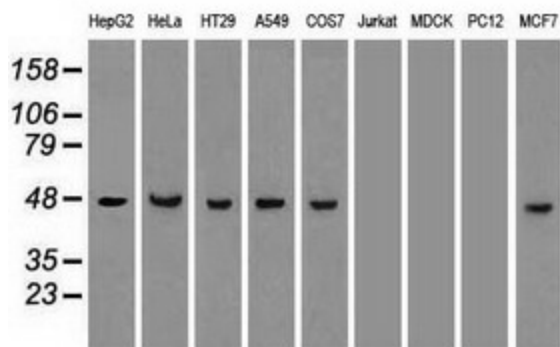
Product Type:	Primary Antibodies
Clone Name:	OTI1H10
Applications:	IF, IHC, WB
Recommended Dilution:	WB 1:500~1000, IHC 1:50, IF 1:100
Reactivity:	Human, Monkey, Mouse, Rat
Host:	Mouse
Isotype:	IgG2a
Clonality:	Monoclonal
Immunogen:	Human recombinant protein fragment corresponding to amino acids 69-372 of human CK18 (NP_000215) produced in E.coli.
Formulation:	PBS (pH 7.3) containing 1% BSA, 50% glycerol and 0.02% sodium azide.
Concentration:	0.5 mg/ml
Purification:	Purified from mouse ascites fluids or tissue culture supernatant by affinity chromatography (protein A/G)
Conjugation:	Biotin
Storage:	Store at -20°C as received.
Stability:	Stable for 12 months from date of receipt.
Predicted Protein Size:	47.9 kDa
Gene Name:	keratin 18
Database Link:	NP_954657 Entrez Gene 16668 MouseEntrez Gene 294853 RatEntrez Gene 3875 Human P05783
Background:	Keratin 18 together with its filament partner keratin 8, are perhaps the most commonly found members of the intermediate filament gene family. They are expressed in single layer epithelial tissues of the body. Mutations in this gene have been linked to cryptogenic cirrhosis. Two transcript variants encoding the same protein have been found for this gene.
Synonyms:	CK-18; CYK18; K18



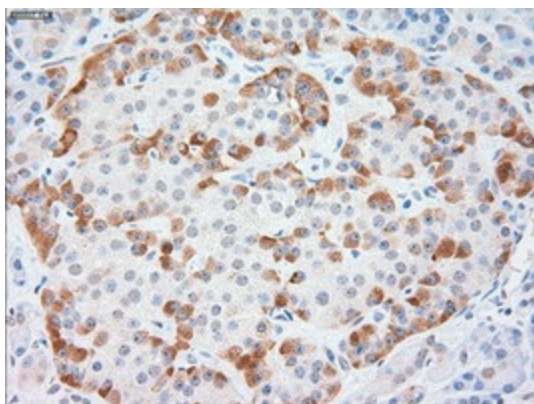
[View online »](#)

Protein Pathways: Pathogenic Escherichia coli infection

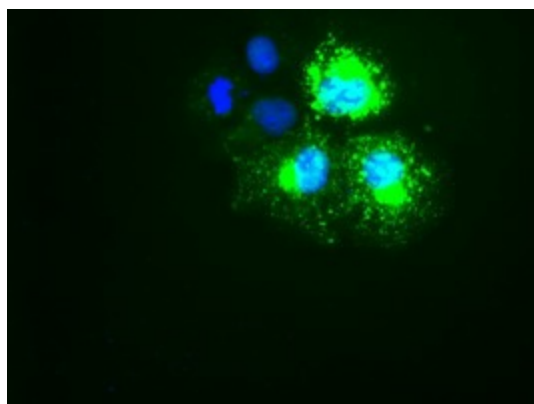
Product images:



Western blot analysis of extracts (35ug) from 9 different cell lines by using anti-KRT18 monoclonal antibody.



Immunohistochemical staining of paraffin-embedded Human pancreas tissue within the normal limits using anti-KRT18 mouse monoclonal antibody. (Heat-induced epitope retrieval by 10mM citric buffer, pH6.0, 100°C for 10min, [TA500017])



Anti-KRT18 mouse monoclonal antibody ([TA500017]) immunofluorescent staining of COS7 cells transiently transfected by pCMV6-ENTRY KRT18 ([RC210049]).