

Product datasheet for **TA500016**

Cytokeratin 18 (KRT18) Mouse Monoclonal Antibody [Clone ID: OTI5E8]

Product data:

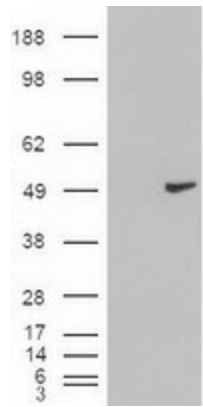
Product Type:	Primary Antibodies
Clone Name:	OTI5E8
Applications:	IHC, WB
Recommended Dilution:	WB 1:1000, IHC 1:50
Reactivity:	Human, Dog, Mouse, Rat
Host:	Mouse
Isotype:	IgG2b
Clonality:	Monoclonal
Immunogen:	Human recombinant protein fragment corresponding to amino acids 69-372 of human CK18 (NP_000215) produced in E.coli.
Formulation:	PBS (pH 7.3) containing 1% BSA, 50% glycerol and 0.02% sodium azide.
Concentration:	0.26 mg/ml
Purification:	Purified from mouse ascites fluids or tissue culture supernatant by affinity chromatography (protein A/G)
Conjugation:	Unconjugated
Storage:	Store at -20°C as received.
Stability:	Stable for 12 months from date of receipt.
Predicted Protein Size:	47.9 kDa
Gene Name:	keratin 18
Database Link:	NP_954657 Entrez Gene 16668 MouseEntrez Gene 294853 RatEntrez Gene 477601 DogEntrez Gene 3875 Human P05783
Background:	Keratin 18 together with its filament partner keratin 8, are perhaps the most commonly found members of the intermediate filament gene family. They are expressed in single layer epithelial tissues of the body. Mutations in this gene have been linked to cryptogenic cirrhosis. Two transcript variants encoding the same protein have been found for this gene.



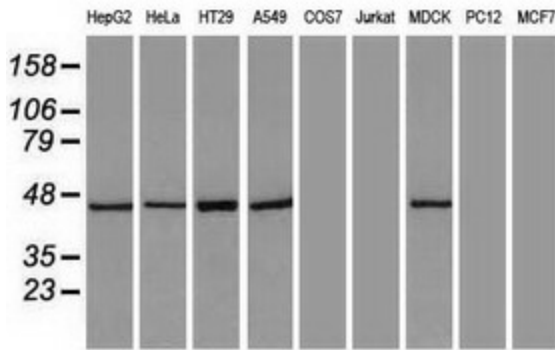
[View online »](#)

Synonyms: CK-18; CYK18; K18
Protein Pathways: Pathogenic Escherichia coli infection

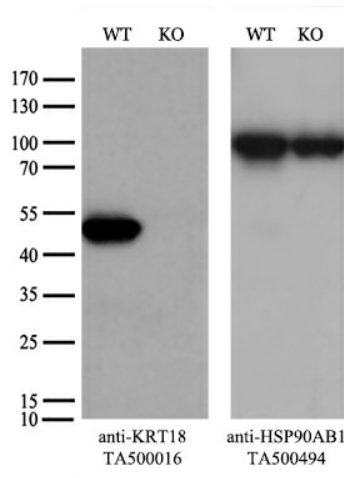
Product images:



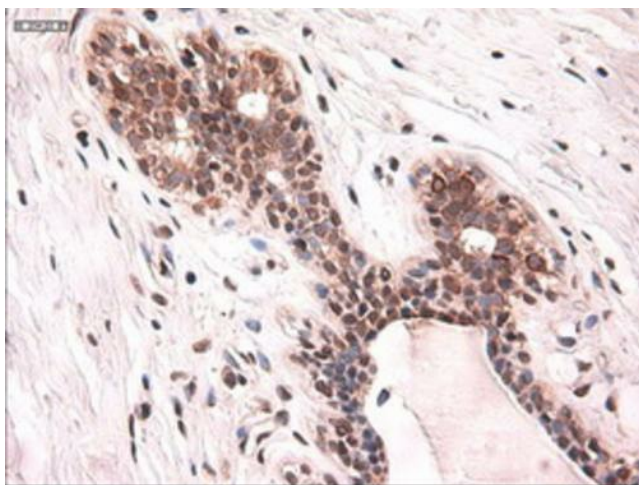
HEK293T cells were transfected with the pCMV6-ENTRY control (Left lane) or pCMV6-ENTRY KRT18 ([RC210049], Right lane) cDNA for 48 hrs and lysed. Equivalent amounts of cell lysates (5 ug per lane) were separated by SDS-PAGE and immunoblotted with anti-KRT18. Positive lysates [LY404683] (100ug) and [LC404683] (20ug) can be purchased separately from OriGene.



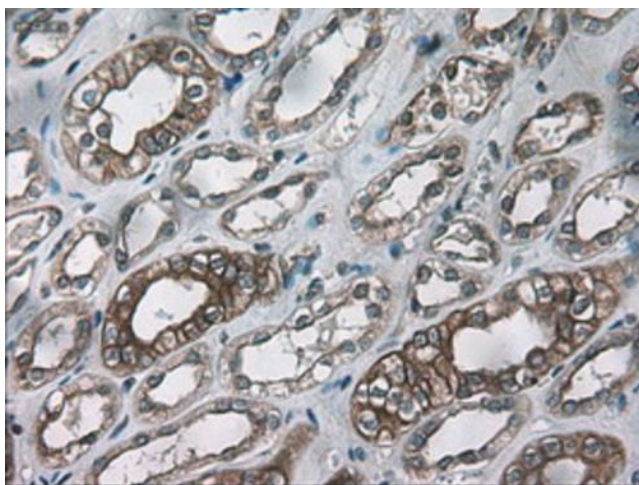
Western blot analysis of extracts (35ug) from 9 different cell lines by using anti-KRT18 monoclonal antibody.



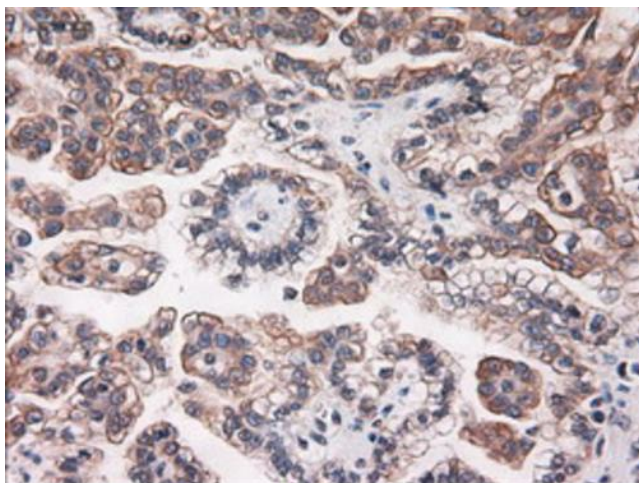
Equivalent amounts of cell lysates (10 ug per lane) of wild-type HeLa cells (WT, Cat# LC810HELA) and KRT18-Knockout HeLa cells (KO, Cat# [LC831285]) were separated by SDS-PAGE and immunoblotted with anti-KRT18 monoclonal antibody TA500016 (1:500). Then the blotted membrane was stripped and reprobred with anti-HSP90 antibody as a loading control.



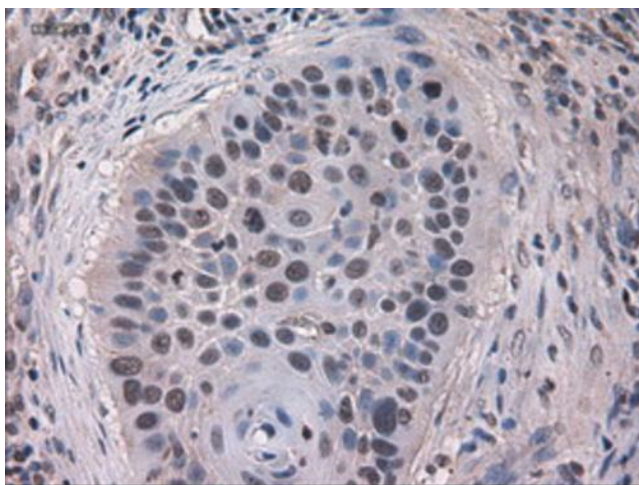
Immunohistochemical staining of paraffin-embedded Human breast tissue within the normal limits using anti-KRT18 mouse monoclonal antibody. Heat-induced epitope retrieval by EDTA solution buffer pH 8.0 at 120°C for 3 min.



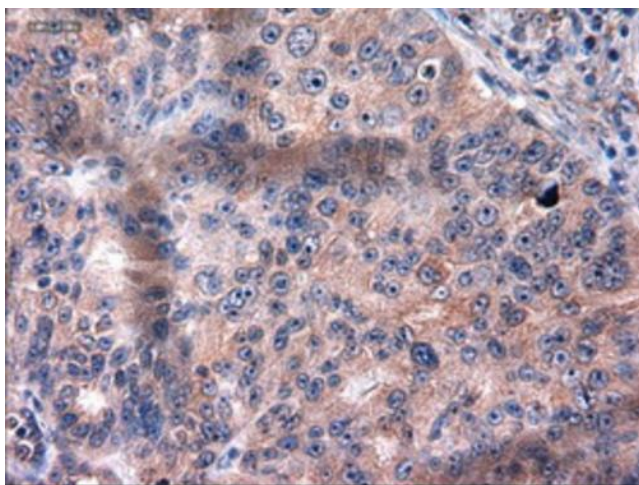
Immunohistochemical staining of paraffin-embedded Human Kidney tissue within the normal limits using anti-KRT18 mouse monoclonal antibody. Heat-induced epitope retrieval by EDTA solution buffer pH 8.0 at 120°C for 3 min.



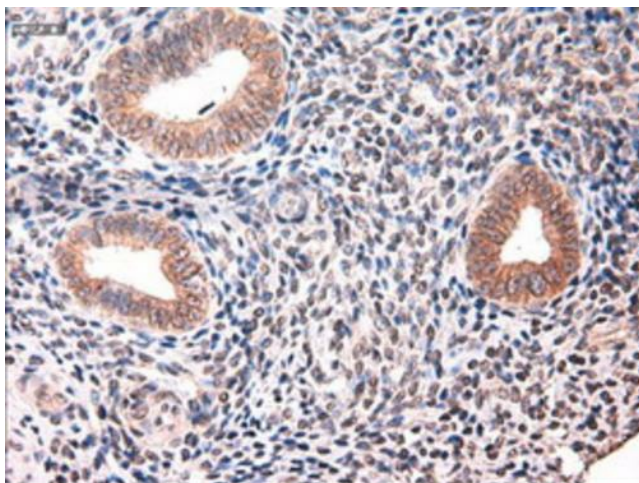
Immunohistochemical staining of paraffin-embedded Carcinoma of Human kidney tissue using anti-KRT18 mouse monoclonal antibody. Heat-induced epitope retrieval by EDTA solution buffer pH 8.0 at 120°C for 3 min.



Immunohistochemical staining of paraffin-embedded Carcinoma of Human lung tissue using anti-KRT18 mouse monoclonal antibody. Heat-induced epitope retrieval by EDTA solution buffer pH 8.0 at 120°C for 3 min.



Immunohistochemical staining of paraffin-embedded Adenocarcinoma of Human ovary tissue using anti-KRT18 mouse monoclonal antibody. Heat-induced epitope retrieval by EDTA solution buffer pH 8.0 at 120°C for 3 min.



Immunohistochemical staining of paraffin-embedded Human endometrium tissue within the normal limits using anti-KRT18 mouse monoclonal antibody. Heat-induced epitope retrieval by EDTA solution buffer pH 8.0 at 120°C for 3 min.