

Product datasheet for **TA500014**

BMP4 Mouse Monoclonal Antibody [Clone ID: OTI6B7]

Product data:

| | |
|-------------------------|--|
| Product Type: | Primary Antibodies |
| Clone Name: | OTI6B7 |
| Applications: | IF, WB |
| Recommended Dilution: | WB 1:500, IF 1:100 |
| Reactivity: | Human, Mouse, Rat |
| Host: | Mouse |
| Isotype: | IgG1 |
| Clonality: | Monoclonal |
| Immunogen: | Recombinant fragment expressed in E.coli corresponding to amino acids 293-408 of human BMP4 |
| Formulation: | PBS (pH 7.3) containing 1% BSA, 50% glycerol and 0.02% sodium azide. |
| Concentration: | 0.42 mg/ml |
| Purification: | Purified from mouse ascites fluids or tissue culture supernatant by affinity chromatography (protein A/G) |
| Conjugation: | Unconjugated |
| Storage: | Store at -20°C as received. |
| Stability: | Stable for 12 months from date of receipt. |
| Predicted Protein Size: | 46.4 kDa |
| Gene Name: | bone morphogenetic protein 4 |
| Database Link: | NP_570911 Entrez Gene 12159 Mouse Entrez Gene 25296 Rat Entrez Gene 652 Human P12644 |



[View online »](#)

Background:

BMP4 is a member of the bone morphogenetic protein family which is part of the transforming growth factor-beta superfamily. The superfamily includes large families of growth and differentiation factors. Bone morphogenetic proteins were originally identified by an ability of demineralized bone extract to induce endochondral osteogenesis in vivo in an extraskeletal site. This particular family member plays an important role in the onset of endochondral bone formation in humans, and a reduction in expression has been associated with a variety of bone diseases, including the heritable disorder Fibrodysplasia Ossificans Progressiva.

Synonyms:

BMP2B; BMP2B1; MCOPS6; OFC11; ZYME

Protein Families:

Adult stem cells, Cancer stem cells, Druggable Genome, Embryonic stem cells, Induced pluripotent stem cells, Secreted Protein, Stem cell relevant signaling - TGFb/BMP signaling pathway

Protein Pathways:

Basal cell carcinoma, Hedgehog signaling pathway, Pathways in cancer, TGF-beta signaling pathway

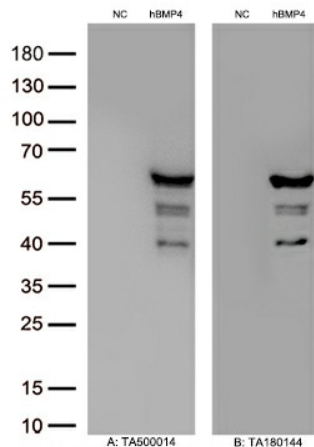
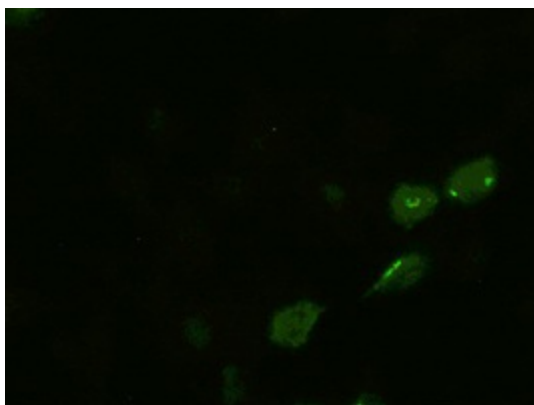
Product images:


Figure A, Western blot analysis of overexpressed lysates(15ug per lane) from HEK293T cells transfected with empty plasmid ([PS100001], NC), human BMP4 plasmid ([RC219979], hBMP4) using anti-BMP4 antibody TA500014(1:500). Figure B, Western blot analysis of the same samples as figure A with anti-DDK antibody ([TA180144], 1:1000)



Anti-BMP4 mouse monoclonal antibody (TA500014) immunofluorescent staining of HeLa cells transiently transfected by pCMV6-ENTRY BMP4 ([RC219979])