

Product datasheet for **TA500003BM**

c-Myc (MYC) Mouse Monoclonal Antibody (HRP conjugated) [Clone ID: OTI3F2]

Product data:

Product Type:	Primary Antibodies
Clone Name:	OTI3F2
Applications:	IF, IHC, WB
Recommended Dilution:	WB 1:1000, IHC 1:50, IF 1:100
Reactivity:	Human, Mouse, Rat
Host:	Mouse
Isotype:	IgG2a
Clonality:	Monoclonal
Immunogen:	Full length human recombinant protein of human Myc (NP_002458) produced in E.coli.
Formulation:	PBS (pH 7.3) containing 1% BSA, 50% glycerol.
Concentration:	0.5 mg/ml
Purification:	Purified from mouse ascites fluids or tissue culture supernatant by affinity chromatography (protein A/G)
Conjugation:	HRP
Storage:	Store at -20°C as received.
Stability:	Stable for 12 months from date of receipt.
Predicted Protein Size:	50.4 kDa
Gene Name:	MYC proto-oncogene, bHLH transcription factor
Database Link:	NP_002458 Entrez Gene 17869 Mouse Entrez Gene 24577 Rat Entrez Gene 4609 Human P01106
Background:	c-Myc is a multifunctional, nuclear phosphoprotein that plays a role in cell cycle progression, apoptosis and cellular transformation. It functions as a transcription factor that regulates transcription of specific target genes. Mutations, overexpression, rearrangement and translocation of this gene have been associated with a variety of hematopoietic tumors, leukemias and lymphomas, including Burkitt lymphoma. The synthesis of non-AUG initiated protein is suppressed in Burkitt's lymphomas, suggesting its importance in the normal function of this gene.



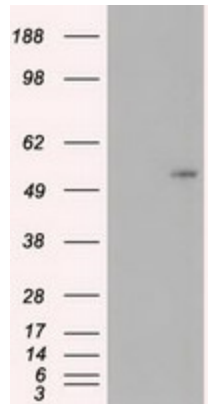
[View online »](#)

Synonyms: bHLHe39; c-Myc; MRTL; MYCC

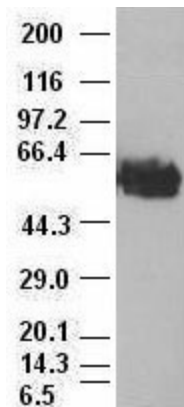
Protein Families: Druggable Genome, Embryonic stem cells, Induced pluripotent stem cells, Stem cell - Pluripotency, Stem cell relevant signaling - JAK/STAT signaling pathway, Stem cell relevant signaling - TGFb/BMP signaling pathway, Stem cell relevant signaling - Wnt Signaling pathway, Transcription Factors

Protein Pathways: Acute myeloid leukemia, Bladder cancer, Cell cycle, Chronic myeloid leukemia, Colorectal cancer, Endometrial cancer, ErbB signaling pathway, Jak-STAT signaling pathway, MAPK signaling pathway, Pathways in cancer, Small cell lung cancer, TGF-beta signaling pathway, Thyroid cancer, Wnt signaling pathway

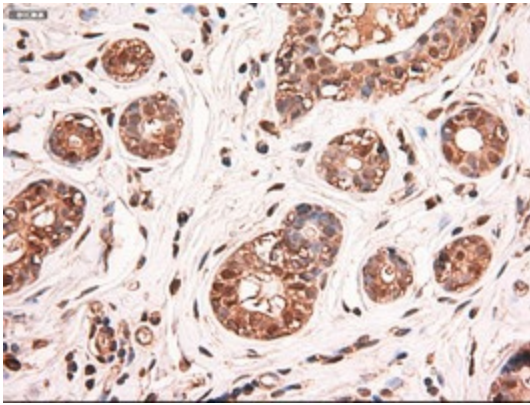
Product images:



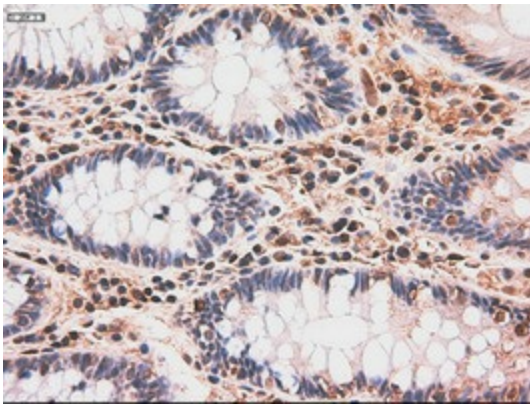
HEK293T cells were transfected with the pCMV6-ENTRY control (Left lane) or pCMV6-ENTRY MYC [RC201611], Right lane) cDNA for 48 hrs and lysed. Equivalent amounts of cell lysates (5 ug per lane) were separated by SDS-PAGE and immunoblotted with anti-MYC. Positive lysates [LY400876] (100ug) and [LC400876] (20ug) can be purchased separately from OriGene.



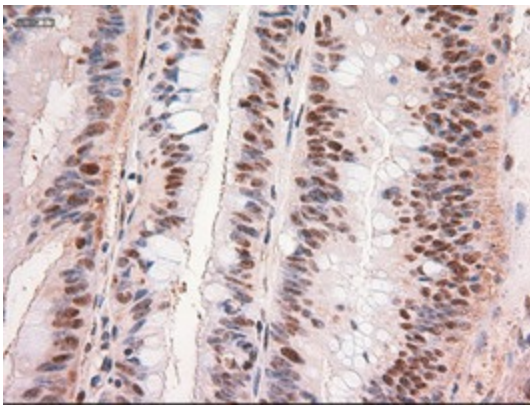
c-myc antibody (3F2) at 1:1000 with HeLa cell lysate



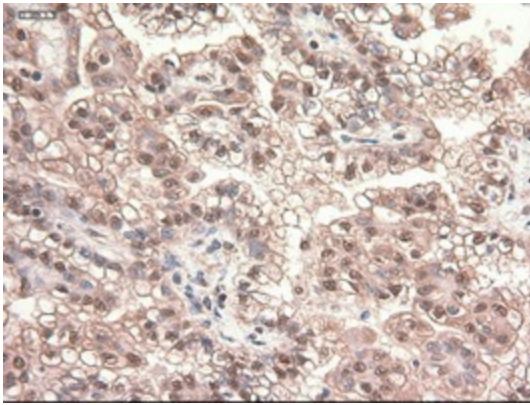
Immunohistochemical staining of paraffin-embedded Human breast tissue within the normal limits using anti-MYC mouse monoclonal antibody. (Heat-induced epitope retrieval by 10mM citric buffer, pH6.0, 100°C for 10min, [TA500003])



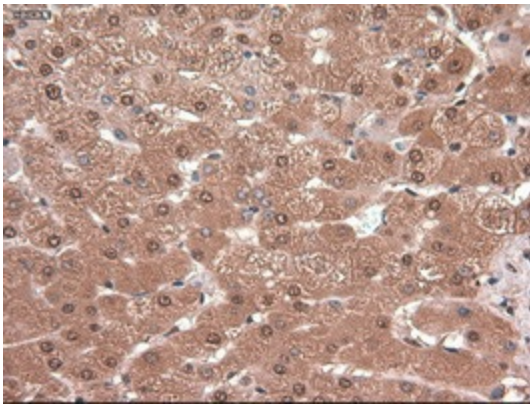
Immunohistochemical staining of paraffin-embedded Human colon tissue within the normal limits using anti-MYC mouse monoclonal antibody. (Heat-induced epitope retrieval by 10mM citric buffer, pH6.0, 100°C for 10min, [TA500003])



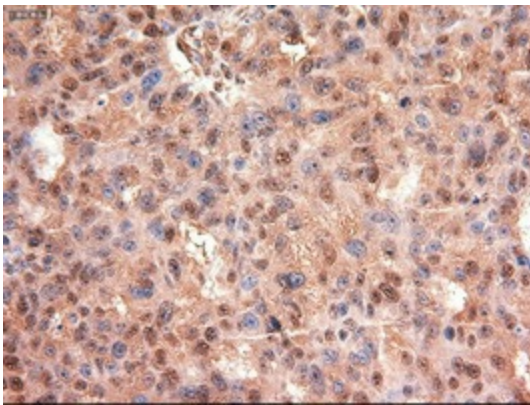
Immunohistochemical staining of paraffin-embedded Adenocarcinoma of Human colon tissue using anti-MYC mouse monoclonal antibody. (Heat-induced epitope retrieval by 10mM citric buffer, pH6.0, 100°C for 10min, [TA500003])



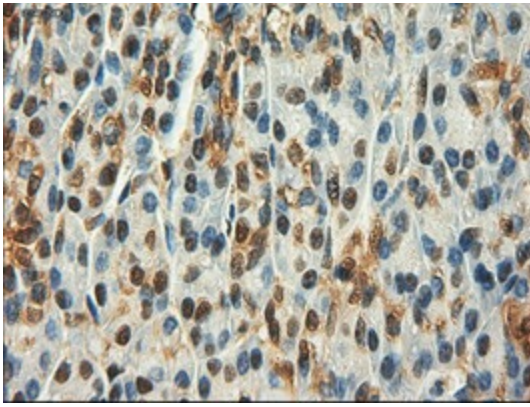
Immunohistochemical staining of paraffin-embedded Carcinoma of Human kidney tissue using anti-MYC mouse monoclonal antibody. (Heat-induced epitope retrieval by 10mM citric buffer, pH6.0, 100°C for 10min, [TA500003])



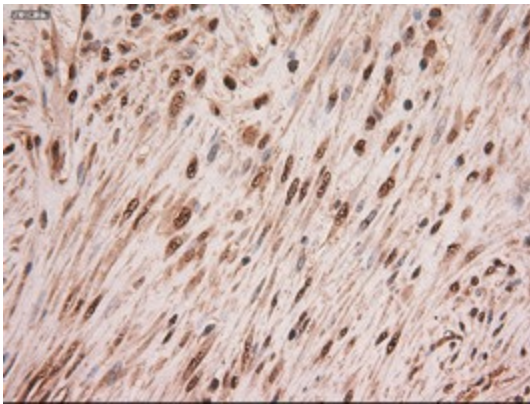
Immunohistochemical staining of paraffin-embedded Human liver tissue within the normal limits using anti-MYC mouse monoclonal antibody. (Heat-induced epitope retrieval by 10mM citric buffer, pH6.0, 100°C for 10min, [TA500003])



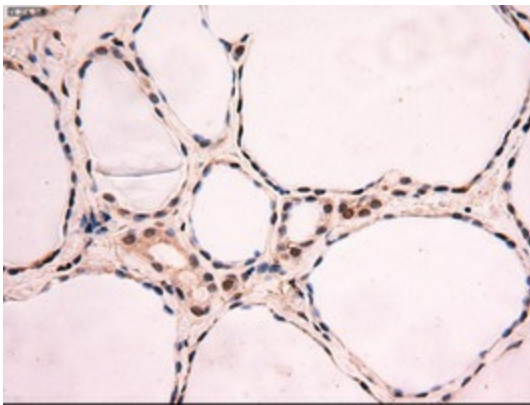
Immunohistochemical staining of paraffin-embedded Adenocarcinoma of Human ovary tissue using anti-MYC mouse monoclonal antibody. (Heat-induced epitope retrieval by 10mM citric buffer, pH6.0, 100°C for 10min, [TA500003])



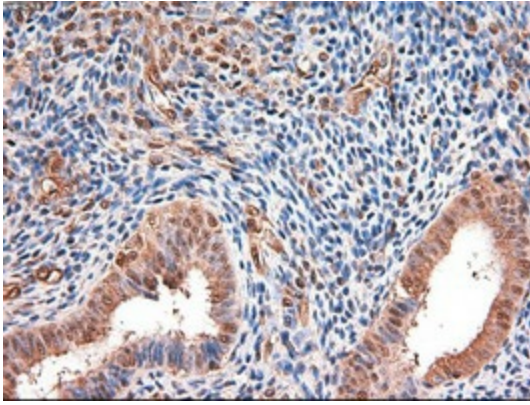
Immunohistochemical staining of paraffin-embedded Human pancreas tissue within the normal limits using anti-MYC mouse monoclonal antibody. (Heat-induced epitope retrieval by 10mM citric buffer, pH6.0, 100°C for 10min, [TA500003])



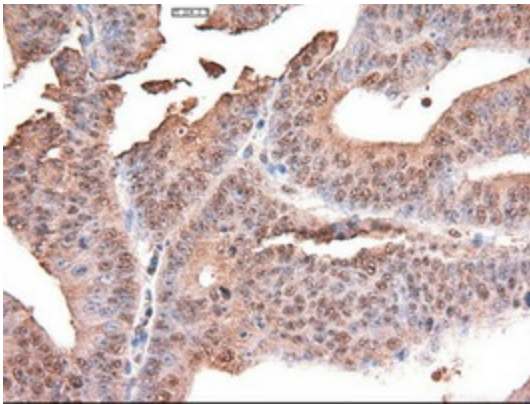
Immunohistochemical staining of paraffin-embedded Carcinoma of Human pancreas tissue using anti-MYC mouse monoclonal antibody. (Heat-induced epitope retrieval by 10mM citric buffer, pH6.0, 100°C for 10min, [TA500003])



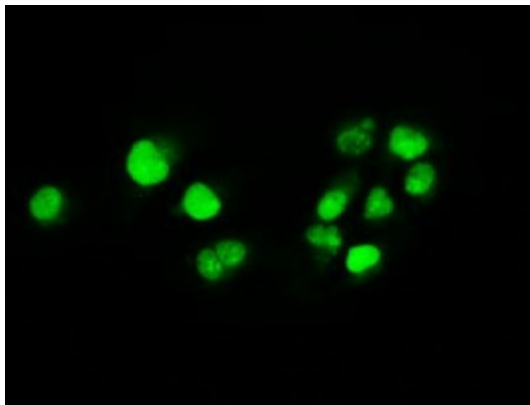
Immunohistochemical staining of paraffin-embedded Human thyroid tissue within the normal limits using anti-MYC mouse monoclonal antibody. (Heat-induced epitope retrieval by 10mM citric buffer, pH6.0, 100°C for 10min, [TA500003])



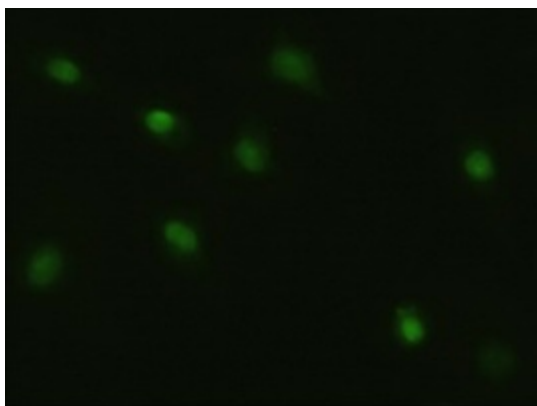
Immunohistochemical staining of paraffin-embedded Human endometrium tissue within the normal limits using anti-MYC mouse monoclonal antibody. (Heat-induced epitope retrieval by 10mM citric buffer, pH6.0, 100°C for 10min, [TA500003])



Immunohistochemical staining of paraffin-embedded Adenocarcinoma of Human endometrium tissue using anti-MYC mouse monoclonal antibody. (Heat-induced epitope retrieval by 10mM citric buffer, pH6.0, 100°C for 10min, [TA500003])



Anti-MYC mouse monoclonal antibody ([TA500003]) immunofluorescent staining of COS7 cells transiently transfected by pCMV6-ENTRY MYC ([RC201611]).



Immunofluorescent staining of HeLa cells using anti-MYC mouse monoclonal antibody ([TA500003]).