

Product datasheet for **TA428159**

Cd24 Rabbit Monoclonal Antibody [Clone ID: 0K8H2]

Product data:

Product Type:	Primary Antibodies
Clone Name:	0K8H2
Applications:	FC
Recommended Dilution:	FC: 5 µl per 10 ⁶ cells in 100 µl volume
Reactivity:	Mouse
Host:	Rabbit
Isotype:	IgG
Clonality:	Monoclonal
Immunogen:	Recombinant protein (or fragment). This information is considered to be commercially sensitive.
Formulation:	Store at 2-8°C. Avoid freeze. Buffer: PBS containing 0.2% BSA, preserved with proclin300 or sodium azide (as specified on the Certificate of Analysis), pH 7.3.
Concentration:	lot specific
Purification:	Affinity purification
Conjugation:	PE
Storage:	Store at 2-8°C. Avoid freeze.
Stability:	Stable for 12 months from date of receipt.
Predicted Protein Size:	8kDa
Database Link:	P24807

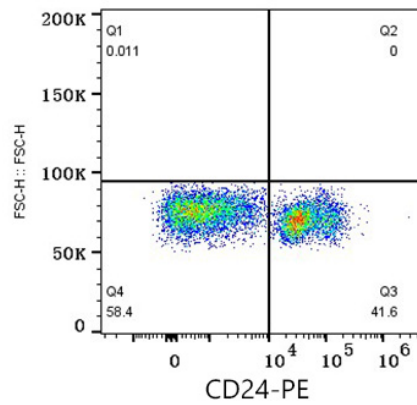
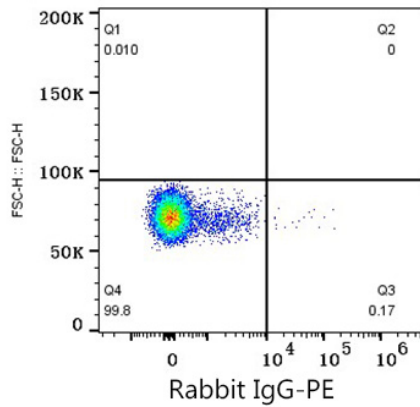


Background:

CD24, also known as heat stable antigen HSA, is a P-selectin ligand involved in adhesion. It is a GPI-anchored glycoprotein expressed on many types of cells, including hematopoietic cells, neural cells, and epithelial cells. CD24 is widely used to delineate stages of lymphocyte development. It also binds to Siglec-10 in humans or Siglec-G in mice. CD24 is frequently used as a marker to identify and isolate cancer stem cells in various cancer types.

Note:

Ex:565nm. Em:574nm.

Product images:

Flow cytometry: 1X10⁶ C57BL/6 mouse splenocytes were surface-stained with Rabbit IgG isotype control (AC042, 2 µg/mL, left), followed by PE Donkey anti-Rabbit pAb staining or PE Rabbit anti-Mouse CD24 mAb (TA428159, 5 µl/Test, right).