

Product datasheet for **TA428139**

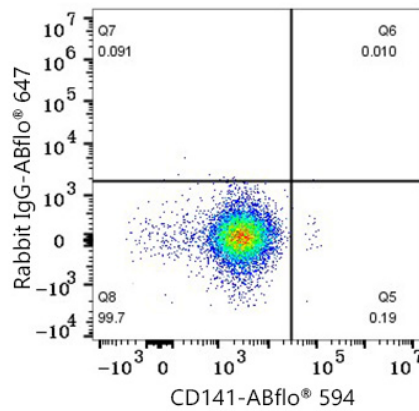
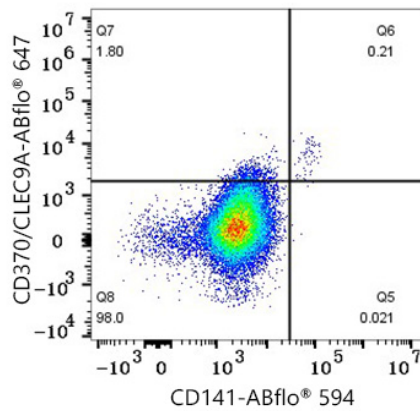
CLEC9A Rabbit Monoclonal Antibody [Clone ID: 9Q0R8]

Product data:

Product Type:	Primary Antibodies
Clone Name:	9Q0R8
Applications:	FC
Recommended Dilution:	FC: 5 µl per 10 ⁶ cells in 100 µl volume
Reactivity:	Human
Host:	Rabbit
Isotype:	IgG
Clonality:	Monoclonal
Immunogen:	Recombinant protein (or fragment). This information is considered to be commercially sensitive.
Formulation:	Store at 2-8°C. Avoid freeze. Buffer: PBS containing 0.2% BSA, preserved with proclin300 or sodium azide (as specified on the Certificate of Analysis), pH 7.3.
Concentration:	lot specific
Purification:	Affinity purification
Conjugation:	ABflo® 647
Storage:	Store at 2-8°C. Avoid freeze.
Stability:	Stable for 12 months from date of receipt.
Predicted Protein Size:	27kDa
Database Link:	Q6UXN8
Background:	CLEC9A is a group V C-type lectin-like receptor (CTLR) that functions as an activation receptor and is expressed on myeloid lineage cells.
Note:	Ex:648nm. Em:664nm.



Product images:



Flow cytometry: 1×10^6 Human PBMC were surface-stained with ABflo® 594 Rabbit anti-Human CD141/Thrombomodulin mAb (A24180, 5 μ l/Test) and ABflo® 647 Rabbit anti-Human CD370/CLEC9A mAb (TA428139, 5 μ l/Test, left) or ABflo® 647 Rabbit IgG isotype control (A22070, 5 μ l/Test, right). Cells in the monocytes gate were used for analysis.