

## Product datasheet for **TA428109**

### **Cd24 Rabbit Monoclonal Antibody [Clone ID: ISIH7]**

#### **Product data:**

<b>Product Type:</b>	Primary Antibodies
<b>Clone Name:</b>	ISIH7
<b>Applications:</b>	FC, ICC/IF
<b>Recommended Dilution:</b>	IF/ICC: 1:50 – 1:200; IF-P: 1:50 – 1:200; FC: 5 µl per 10 <sup>6</sup> cells in 100 µl volume
<b>Reactivity:</b>	Mouse
<b>Host:</b>	Rabbit
<b>Isotype:</b>	IgG
<b>Clonality:</b>	Monoclonal
<b>Immunogen:</b>	Recombinant protein (or fragment). This information is considered to be commercially sensitive.
<b>Formulation:</b>	Store at 2–8°C. Avoid freeze. Buffer: PBS containing 0.2% BSA, preserved with proclin300 or sodium azide (as specified on the Certificate of Analysis), pH 7.3.
<b>Concentration:</b>	lot specific
<b>Purification:</b>	Affinity purification
<b>Conjugation:</b>	ABflo® 647
<b>Storage:</b>	Store at 2–8°C. Avoid freeze.
<b>Stability:</b>	Stable for 12 months from date of receipt.
<b>Predicted Protein Size:</b>	8kDa
<b>Database Link:</b>	<a href="#">P24807</a>

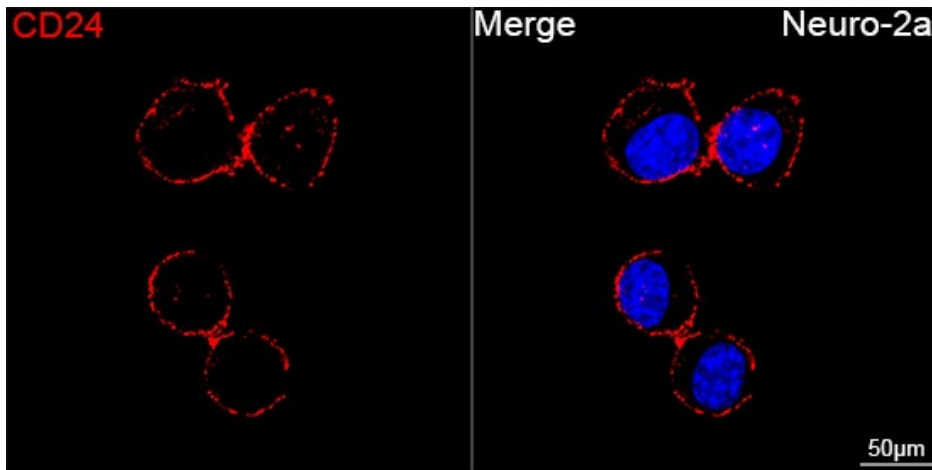


**Background:**

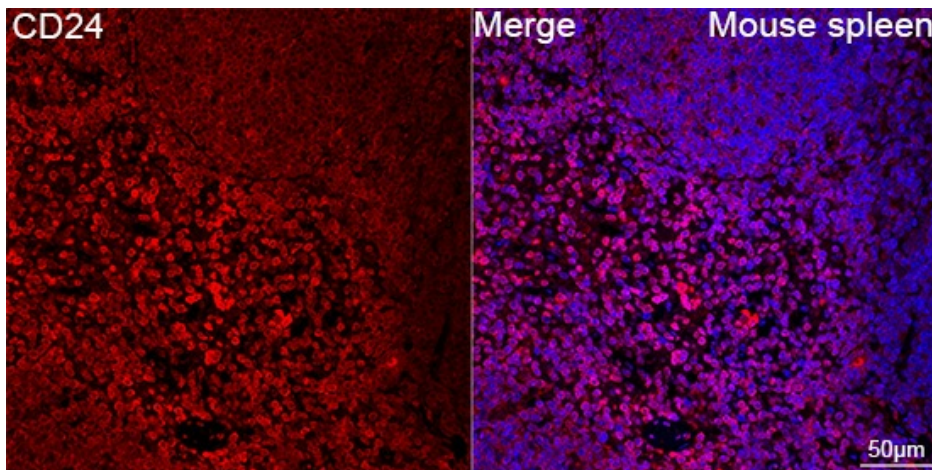
CD24, also known as heat stable antigen HSA, is a P-selectin ligand involved in adhesion. It is a GPI-anchored glycoprotein expressed on many types of cells, including hematopoietic cells, neural cells, and epithelial cells. CD24 is widely used to delineate stages of lymphocyte development. It also binds to Siglec-10 in humans or Siglec-G in mice. CD24 is frequently used as a marker to identify and isolate cancer stem cells in various cancer types.

**Note:**

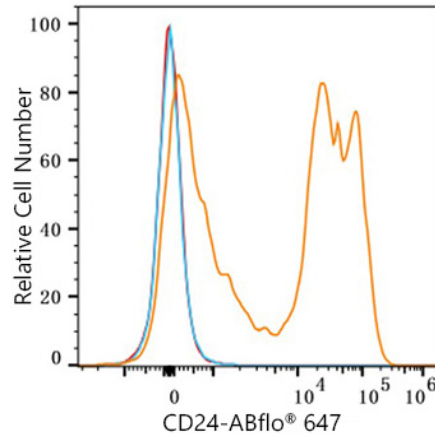
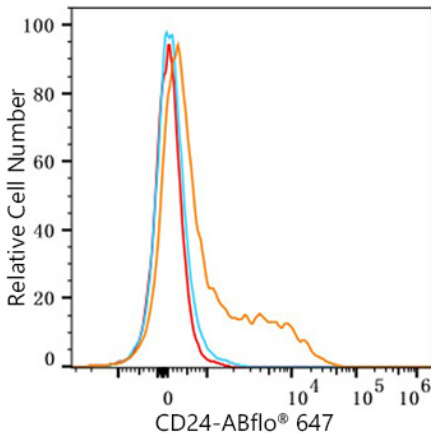
Ex:648nm. Em:664nm.

**Product images:**

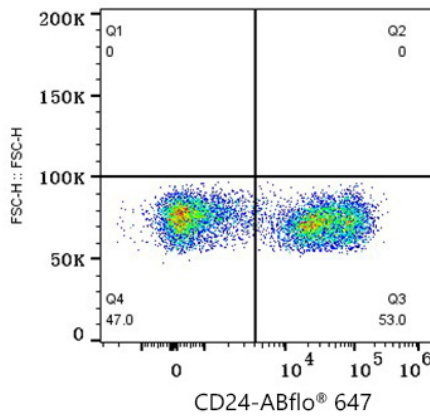
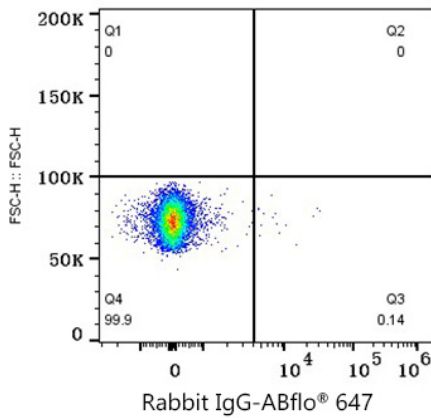
Confocal imaging of Neuro-2a cells using ABflo® 647 Rabbit anti-Mouse CD24 mAb (TA428109, dilution 1:50). DAPI was used for nuclear staining (Blue). Objective: 100x.



Confocal imaging of paraffin-embedded Mouse spleen tissue using ABflo® 647 Rabbit anti-Mouse CD24 mAb (TA428109, dilution 1:50). DAPI was used for nuclear staining (Blue). High pressure antigen retrieval performed with 0.01M Citrate Buffer (pH 6.0) prior to IF staining. Objective: 40x.



Flow cytometry:  $1 \times 10^6$  RAW 264.7 cells (Low Expression, left) and C57BL/6 mouse Splenocytes (right) were surface-stained with ABflo® 647 Rabbit anti-Mouse CD24 mAb (TA428109,  $5 \mu\text{l}/\text{Test}$ , orange line) or ABflo® 647 Rabbit IgG isotype control (A22070,  $5 \mu\text{l}/\text{Test}$ , blue line). Non-fluorescently stained cells were used as blank control (red line).



Flow cytometry:  $1 \times 10^6$  C57BL/6 mouse Splenocytes were surface-stained with ABflo® 647 Rabbit IgG isotype control (A22070,  $5 \mu\text{l}/\text{Test}$ , left) or ABflo® 647 Rabbit anti-Mouse CD24 mAb (TA428109,  $5 \mu\text{l}/\text{Test}$ , right).