

Product datasheet for **TA427879**

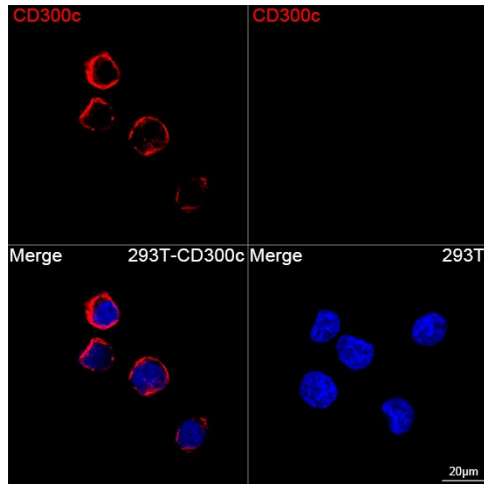
CD300C Rabbit Monoclonal Antibody [Clone ID: 3O0W9]

Product data:

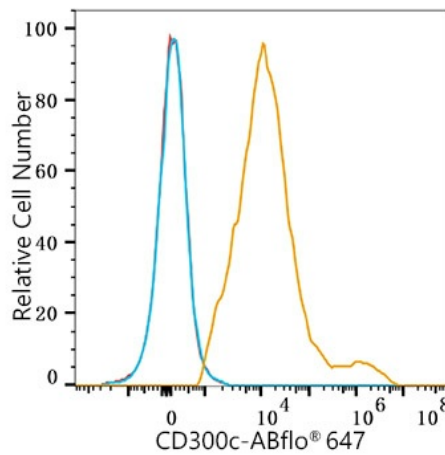
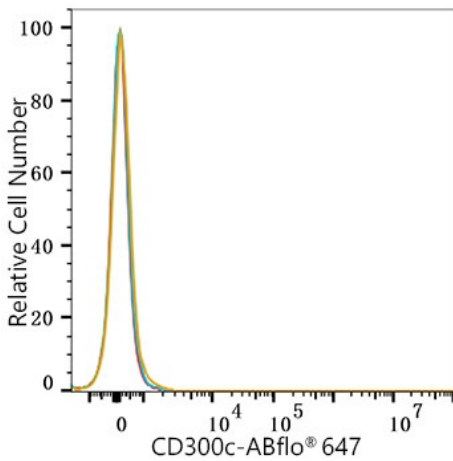
Product Type:	Primary Antibodies
Clone Name:	3O0W9
Applications:	FC, ICC/IF
Recommended Dilution:	IF/ICC: 1:50 - 1:200; FC: 5 µl per 10 ⁶ cells in 100 µl volume
Reactivity:	Human
Host:	Rabbit
Isotype:	IgG
Clonality:	Monoclonal
Immunogen:	Recombinant protein (or fragment). This information is considered to be commercially sensitive.
Formulation:	Store at 2-8°C. Avoid freeze. Buffer: PBS containing 0.2% BSA, preserved with proclin300 or sodium azide (as specified on the Certificate of Analysis), pH 7.3.
Concentration:	lot specific
Purification:	Affinity purification
Conjugation:	ABflo® 647
Storage:	Store at 2-8°C. Avoid freeze.
Stability:	Stable for 12 months from date of receipt.
Predicted Protein Size:	25kDa
Database Link:	Q08708
Background:	The CMRF35 antigen, which was identified by reactivity with a monoclonal antibody, is present on monocytes, neutrophils, and some T and B lymphocytes (Jackson et al., 1992 [PubMed 1349532]).
Note:	Ex:648nm. Em:664nm.



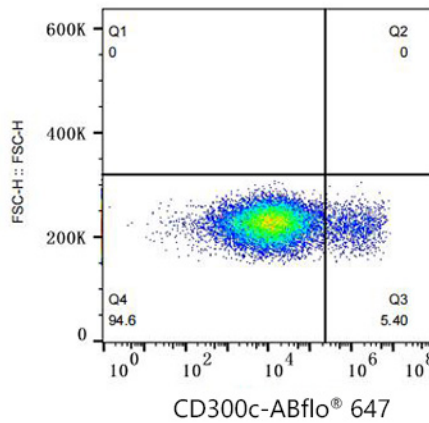
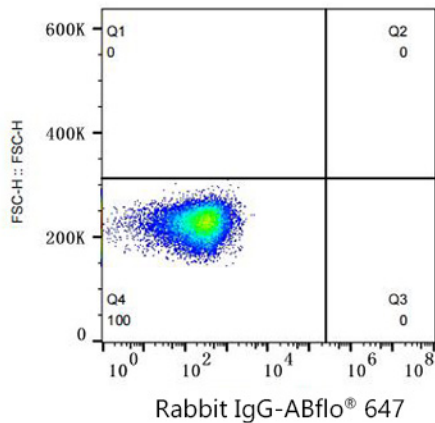
Product images:



Confocal imaging of 293T cells transfected with CD300c using ABflo® 647 Rabbit anti-Human CD300c mAb (TA427879, dilution 1:100). DAPI was used for nuclear staining (Blue). Objective: 100x.



Flow cytometry: 1×10^6 293F cells (negative control, left) and 293F (Transfection, right) cells were surface-stained with ABflo® 647 Rabbit anti-Human CD300c mAb (TA427879, 5 µl/Test, orange line) or ABflo® 647 Rabbit IgG isotype control (A22070, 5 µl/Test, blue line). Non-fluorescently stained cells were used as blank control (red line).



Flow cytometry: 1×10^6 293F (Transfection) cells were surface-stained with ABflo® 647 Rabbit IgG isotype control (A22070, 5 µl/Test, left) or ABflo® 647 Rabbit anti-Human CD300c mAb (TA427879, 5 µl/Test, right).