

## Product datasheet for **TA425344**

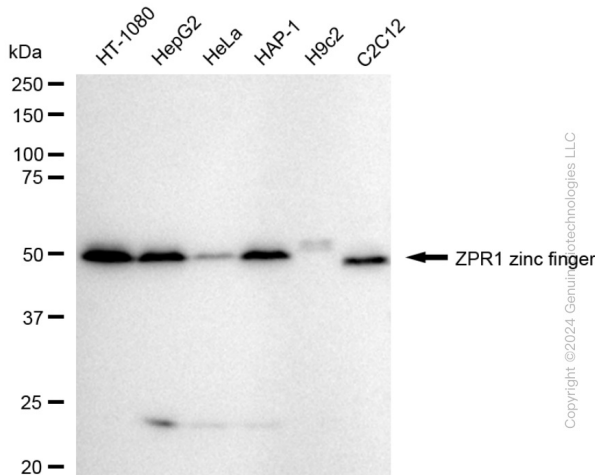
### ZPRI Rabbit Monoclonal Antibody [Clone ID: 24GB1805]

#### Product data:

<b>Product Type:</b>	Primary Antibodies
<b>Clone Name:</b>	24GB1805
<b>Applications:</b>	FC, ICC, WB
<b>Recommended Dilution:</b>	Western Blotting (WB): 1:1,000–1:5,000, Flow Cytometry (FCM): 1:2,000, Immunocytochemistry (IC): 1:100–1:1,000
<b>Reactivity:</b>	Human, Mouse, Rat
<b>Host:</b>	Rabbit
<b>Isotype:</b>	IgG
<b>Clonality:</b>	Monoclonal
<b>Immunogen:</b>	A synthesized peptide derived from human ZNF259
<b>Formulation:</b>	Supplied in PBS (pH 7.4) containing 50% glycerol, and 0.02% sodium azide.
<b>Concentration:</b>	Lot dependent
<b>Purification:</b>	Affinity Purified
<b>Conjugation:</b>	Unconjugated
<b>Stability:</b>	Store at -20 °C for one year.
<b>Database Link:</b>	<a href="#">O75312</a>
<b>Synonyms:</b>	GKAF; Zinc Finger Protein 259; Zinc Finger Protein ZPRI; ZNF259; ZPRI; ZPRI Zinc Finger

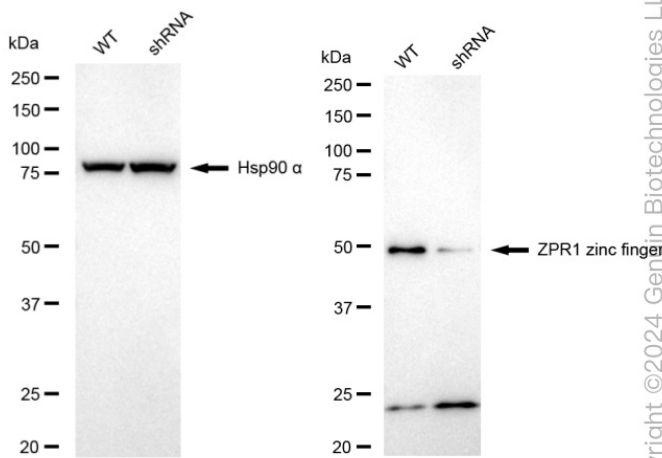


Product images:



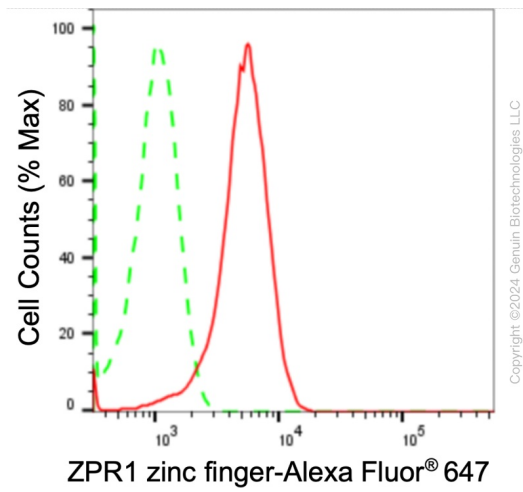
Copyright ©2024 Genium Biotechnologies LLC

Western blotting analysis using anti-solute carrier family 45 member 3 antibody . Total cell lysates (30 µg) from various cell lines were loaded and separated by SDS-PAGE. The blot was incubated with anti-solute carrier family 45 member 3 antibody and HRP-conjugated goat anti-rabbit secondary antibody respectively. Image was developed using anti-FeQ™ ECL Substrate Kit .

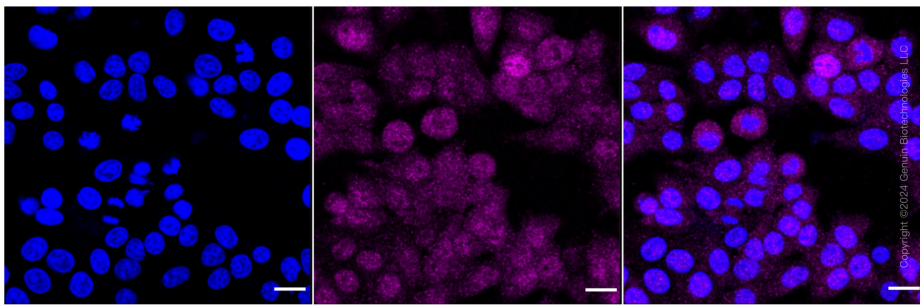


Copyright ©2024 Genium Biotechnologies LL

Western blotting analysis using anti-ZPR1 zinc finger antibody . ZPR1 zinc finger expression in wild-type (WT) and ZPR1 zinc finger (ZPR1) shRNA knockdown (KD) HeLa cells with 30 µg of total cell lysates . Hsp90 α serves as a loading control. The blot was incubated with anti-ZPR1 zinc finger antibody and HRP-conjugated goat anti-rabbit secondary antibody respectively. Image was developed using anti-NaQ™ ECL Substrate Kit .



Flow cytometric analysis of ZPR1 zinc finger expression in HepG2 cells using anti-ZPR1 zinc finger antibody . Green, isotype control; red, ZPR1 zinc finger.



Immunocytochemical staining of HepG2 cells with anti-ZPR1 zinc finger antibody . Nuclei were stained blue with DAPI; ZPR1 zinc finger was stained magenta with Alexa Fluor® 647. Images were taken using anti-Leica stellaris 5. Protein abundance based on laser Intensity and smart gain: Medium. Scale bar: 20 µm.