

Product datasheet for **TA425343**

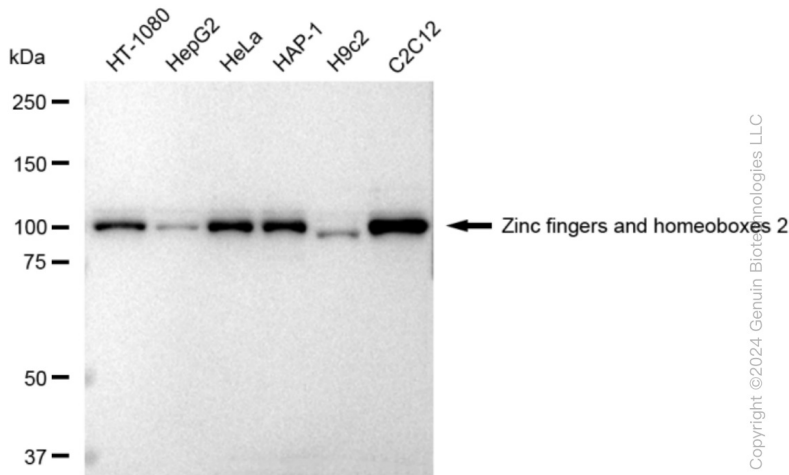
ZHX2 Rabbit Monoclonal Antibody [Clone ID: 23GB4270]

Product data:

Product Type:	Primary Antibodies
Clone Name:	23GB4270
Applications:	ICC, WB
Recommended Dilution:	Western Blotting (WB): 1:1,000-1:5,000, Immunocytochemistry (IC): 1:100-1:1,000
Reactivity:	Human, Mouse, Rat
Host:	Rabbit
Isotype:	IgG
Clonality:	Monoclonal
Immunogen:	A synthesized peptide derived from human ZHX2
Formulation:	Supplied in PBS (pH 7.4) containing 50% glycerol, and 0.02% sodium azide.
Concentration:	Lot dependent
Purification:	Affinity Purified
Conjugation:	Unconjugated
Stability:	Store at -20 °C for one year.
Database Link:	Q9Y6X8
Synonyms:	AFP Regulator 1; AFRI; Alpha-Fetoprotein Regulator 1; KIAA0854; RAF; Regulator Of AFP; Transcription Factor ZHX2; ZHX2; Zinc-Fingers And Homeoboxes 2; Zinc Finger And Homeodomain Protein; Zinc Fingers And Homeoboxes 2; Zinc Fingers And Homeoboxes Protein

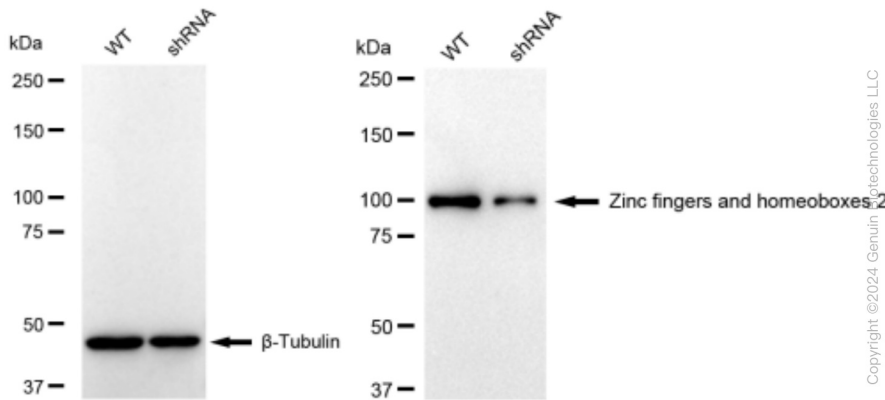


Product images:



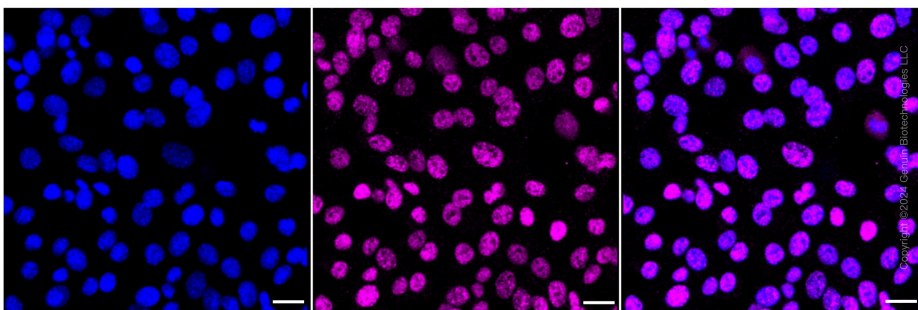
Copyright ©2024 Genuin Biotechnologies LLC

Western blotting analysis using anti-Zinc fingers and homeoboxes 2 antibody . Total cell lysates (30 µg) from various cell lines were loaded and separated by SDS-PAGE. The blot was incubated with anti-Zinc fingers and homeoboxes 2 antibody and HRP-conjugated goat anti-rabbit secondary antibody respectively. Image was developed using anti-FeQ™ ECL Substrate Kit .



Copyright ©2024 Genuin Biotechnologies LLC

Western blotting analysis using anti-Zinc fingers and homeoboxes 2 antibody . Zinc fingers and homeoboxes 2 expression in wild type (WT) and Zinc fingers and homeoboxes 2 shRNA knockdown (KD) HeLa cells with 30 µg of total cell lysates. β-Tubulin serves as a loading control. The blot was incubated with anti-Zinc fingers and homeoboxes 2 antibody and HRP-conjugated goat anti-rabbit secondary antibody respectively. Image was developed using anti-FeQ™ ECL Substrate Kit .



Copyright ©2024 Genuin Biotechnologies LLC

Immunocytochemical staining of C2C12 cells with Zinc fingers and homeoboxes 2 antibody . Nuclei were stained blue with DAPI; Zinc fingers and homeoboxes 2 was stained magenta with Alexa Fluor® 647. Images were taken using anti-Leica stellaris 5. Protein abundance based on laser Intensity and smart gain: Medium. Scale bar: 20 µm.