

Product datasheet for **TA425341S**

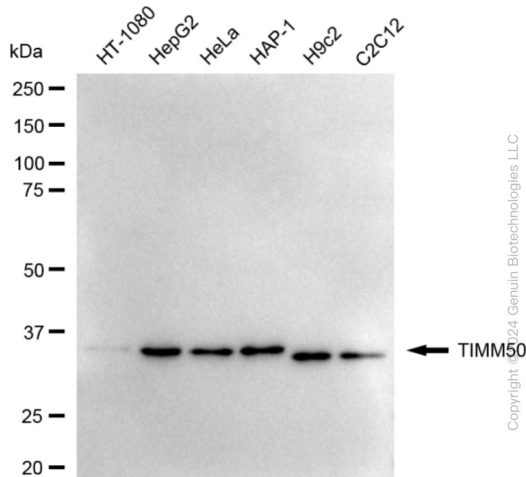
ZBTB33 Rabbit Monoclonal Antibody [Clone ID: 24GB5300]

Product data:

Product Type:	Primary Antibodies
Clone Name:	24GB5300
Applications:	FC, ICC, WB
Recommended Dilution:	Western Blotting (WB): 1:1,000–1:5,000, Flow Cytometry (FCM): 1:2,000, Immunocytochemistry (IC): 1:100–1:1,000
Reactivity:	Human, Mouse, Rat
Host:	Rabbit
Isotype:	IgG
Clonality:	Monoclonal
Immunogen:	A synthesized peptide derived from human TIM50
Formulation:	Supplied in PBS (pH 7.4) containing 50% glycerol, and 0.02% sodium azide.
Concentration:	Lot dependent
Purification:	Affinity Purified
Conjugation:	Unconjugated
Stability:	Store at -20 °C for one year.
Database Link:	Q3ZCQ8
Synonyms:	Homolog Of Yeast Tim50; MGCA9; Mitochondrial Import Inner Membrane Translocase Subunit TIM50; TIM50; Tim50-Like Protein; TIM50L; TIMM50; Translocase Of Inner Mitochondrial Membrane 50; Translocase Of Inner Mitochondrial Membrane 50 Homolog (Yeast)

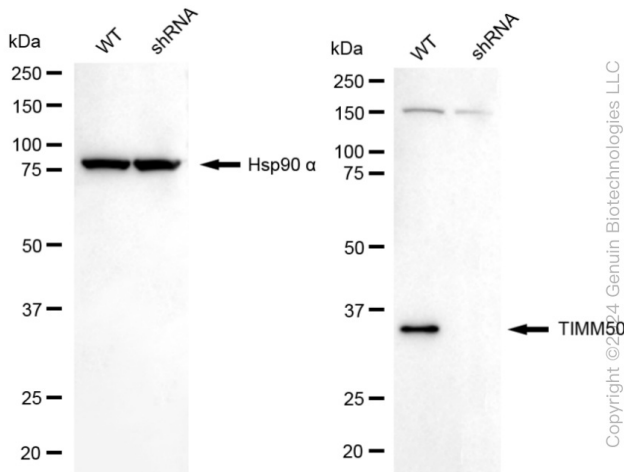


Product images:



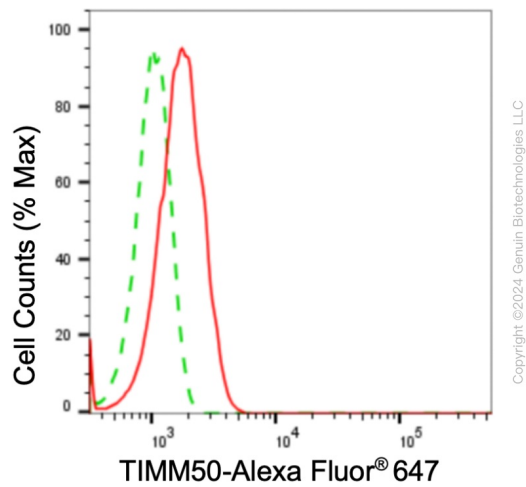
Copyright ©2024 Genuin Biotechnologies LLC

Western blotting analysis using anti-TIMM50 antibody . Total cell lysates (30 µg) from various cell lines were loaded and separated by SDS-PAGE. The blot was incubated with anti-TIMM50 antibody and HRP-conjugated goat anti-rabbit secondary antibody respectively. Image was developed using anti-Plus ECL Super Kit .

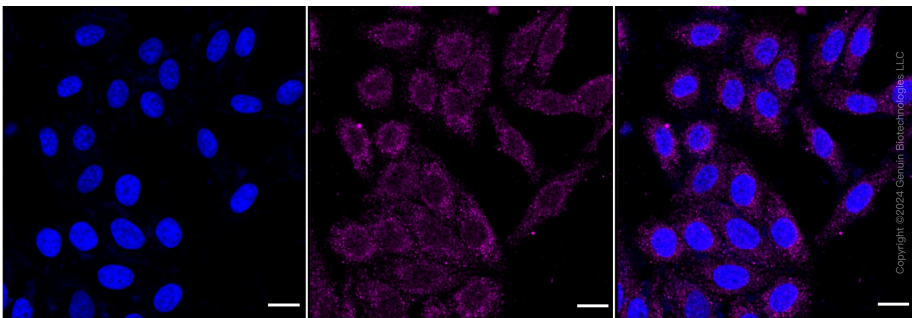


Copyright ©2024 Genuin Biotechnologies LLC

Western blotting analysis using anti-TIMM50 antibody . TIMM50 expression in wild-type (WT) and TIMM50 shRNA knockdown (KD) HeLa cells with 20 µg of total cell lysates . Hsp90 α serves as a loading control. The blot was incubated with anti-TIMM50 antibody and HRP-conjugated goat anti-rabbit secondary antibody respectively. Image was developed using anti-NaQ™ ECL Substrate Kit .



Flow cytometric analysis of TIMM50 expression in HepG2 cells using anti-TIMM50 antibody . Green, isotype control; red, TIMM50.



Immunocytochemical staining of HepG2 cells with anti-TIMM50 antibody . Nuclei were stained blue with DAPI; TIMM50 was stained magenta with Alexa Fluor® 647. Images were taken using anti-Leica stellaris 5. Protein abundance based on laser Intensity and smart gain: Low. Scale bar: 20 μ m.