

## Product datasheet for **TA425341**

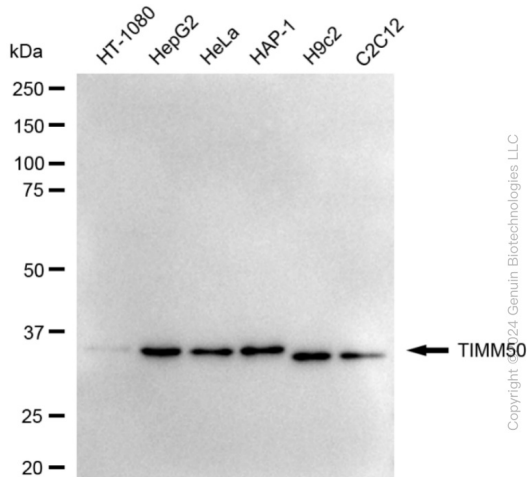
### ZBTB33 Rabbit Monoclonal Antibody [Clone ID: 24GB5300]

#### Product data:

<b>Product Type:</b>	Primary Antibodies
<b>Clone Name:</b>	24GB5300
<b>Applications:</b>	FC, ICC, WB
<b>Recommended Dilution:</b>	Western Blotting (WB): 1:1,000–1:5,000, Flow Cytometry (FCM): 1:2,000, Immunocytochemistry (IC): 1:100–1:1,000
<b>Reactivity:</b>	Human, Mouse, Rat
<b>Host:</b>	Rabbit
<b>Isotype:</b>	IgG
<b>Clonality:</b>	Monoclonal
<b>Immunogen:</b>	A synthesized peptide derived from human TIM50
<b>Formulation:</b>	Supplied in PBS (pH 7.4) containing 50% glycerol, and 0.02% sodium azide.
<b>Concentration:</b>	Lot dependent
<b>Purification:</b>	Affinity Purified
<b>Conjugation:</b>	Unconjugated
<b>Stability:</b>	Store at -20 °C for one year.
<b>Database Link:</b>	<a href="#">Q3ZCQ8</a>
<b>Synonyms:</b>	Homolog Of Yeast Tim50; MGCA9; Mitochondrial Import Inner Membrane Translocase Subunit TIM50; TIM50; Tim50-Like Protein; TIM50L; TIMM50; Translocase Of Inner Mitochondrial Membrane 50; Translocase Of Inner Mitochondrial Membrane 50 Homolog (Yeast)

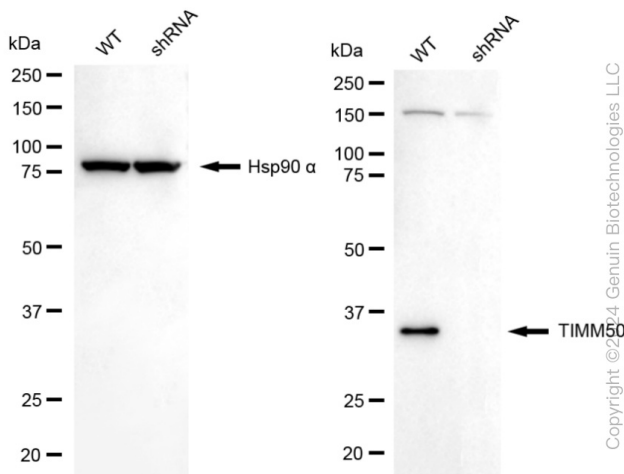


Product images:



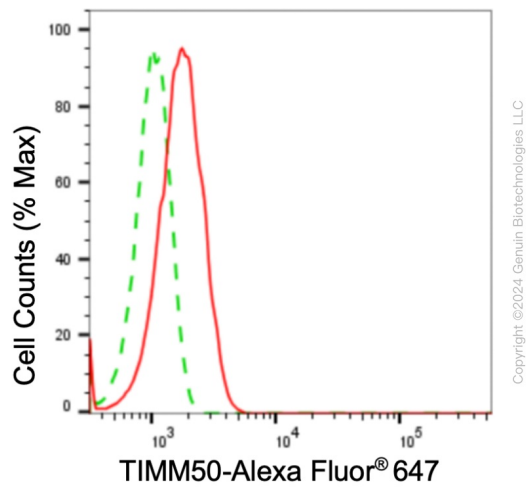
Copyright ©2024 Genuin Biotechnologies LLC

Western blotting analysis using anti-TIMM50 antibody . Total cell lysates (30 µg) from various cell lines were loaded and separated by SDS-PAGE. The blot was incubated with anti-TIMM50 antibody and HRP-conjugated goat anti-rabbit secondary antibody respectively. Image was developed using anti-Plus ECL Super Kit .

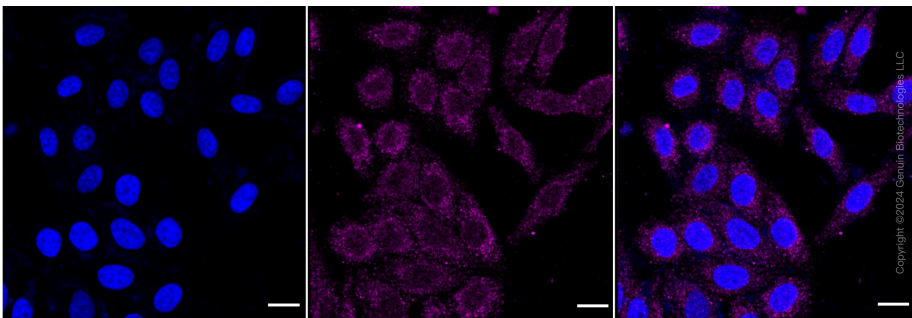


Copyright ©2024 Genuin Biotechnologies LLC

Western blotting analysis using anti-TIMM50 antibody . TIMM50 expression in wild-type (WT) and TIMM50 shRNA knockdown (KD) HeLa cells with 20 µg of total cell lysates . Hsp90 α serves as a loading control. The blot was incubated with anti-TIMM50 antibody and HRP-conjugated goat anti-rabbit secondary antibody respectively. Image was developed using anti-NaQ™ ECL Substrate Kit .



Flow cytometric analysis of TIMM50 expression in HepG2 cells using anti-TIMM50 antibody . Green, isotype control; red, TIMM50.



Immunocytochemical staining of HepG2 cells with anti-TIMM50 antibody . Nuclei were stained blue with DAPI; TIMM50 was stained magenta with Alexa Fluor® 647. Images were taken using anti-Leica stellaris 5. Protein abundance based on laser Intensity and smart gain: Low. Scale bar: 20  $\mu$ m.