

Product datasheet for **TA425338S**

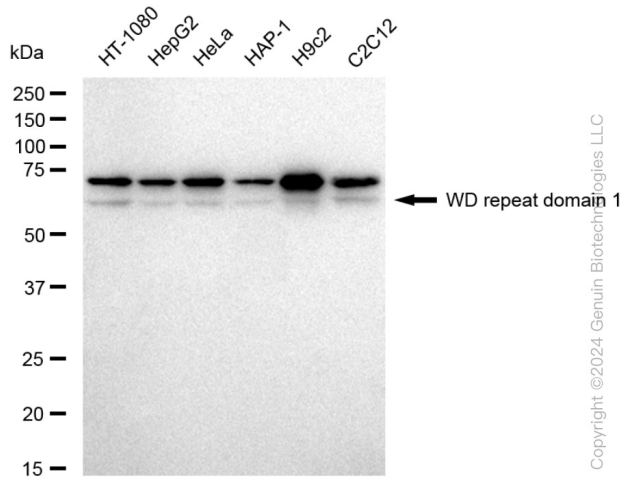
WDR1 Rabbit Monoclonal Antibody [Clone ID: 23GB4720]

Product data:

Product Type:	Primary Antibodies
Clone Name:	23GB4720
Applications:	FC, ICC, WB
Recommended Dilution:	Western Blotting (WB): 1:1,000–1:5,000, Flow Cytometry (FCM): 1:2,000, Immunocytochemistry (IC): 1:100–1:1,000
Reactivity:	Human, Mouse, Rat
Host:	Rabbit
Isotype:	IgG
Clonality:	Monoclonal
Immunogen:	A synthesized peptide derived from human WDR1
Formulation:	Supplied in PBS (pH 7.4) containing 50% glycerol, and 0.02% sodium azide.
Concentration:	Lot dependent
Purification:	Affinity Purified
Conjugation:	Unconjugated
Stability:	Store at -20 °C for one year.
Database Link:	O75083
Synonyms:	Actin-Interacting Protein 1; AIP1; Epididymis Secretory Protein Li 52; HEL-S-52; NORI-1; PFITS; WDR1; WD Repeat-Containing Protein 1; WD Repeat Domain 1

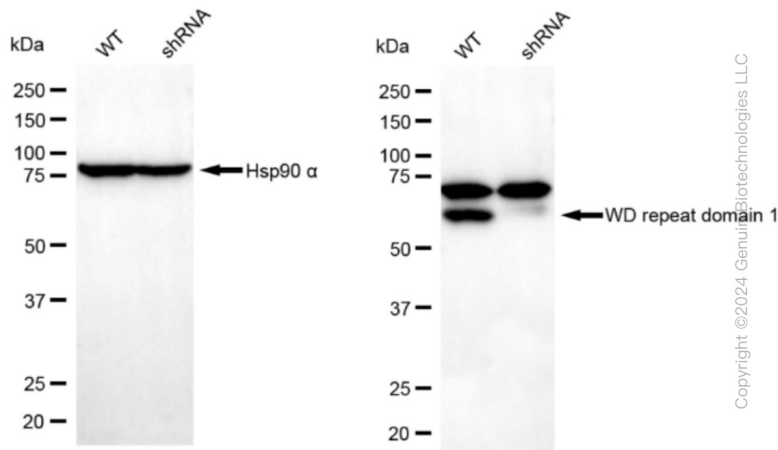


Product images:



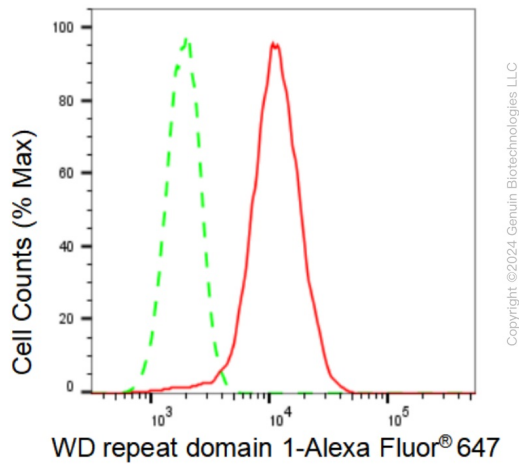
Copyright ©2024 Genuin Biotechnologies LLC

Western blotting analysis using anti-WD repeat domain 1 antibody . Total cell lysates (30 µg) from various cell lines were loaded and separated by SDS-PAGE. The blot was incubated with anti-WD repeat domain 1 antibody and HRP-conjugated goat anti-rabbit secondary antibody respectively. Image was developed using anti-FeQ™ ECL Substrate Kit .

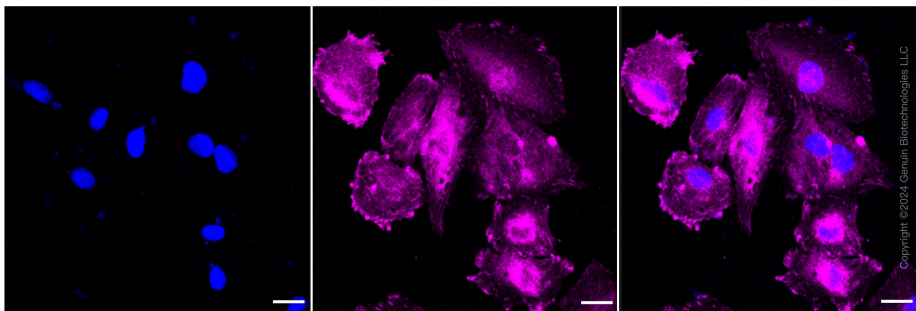


Copyright ©2024 Genuin Biotechnologies LLC

Western blotting analysis using anti-WD repeat domain 1 antibody . WD repeat domain 1 expression in wild type (WT) and WD repeat domain 1 shRNA knockdown (KD) HeLa cells with 30 µg of total cell lysates. Hsp90 α serves as a loading control. The blot was incubated with anti-WD repeat domain 1 antibody and HRP-conjugated goat anti-rabbit secondary antibody respectively. Image was developed using anti-FeQ™ ECL Substrate Kit .



Flow cytometric analysis of WD repeat domain 1 expression in H9c2 cells using anti-WD repeat domain 1 antibody . Green, isotype control; red, WD repeat domain 1.



Immunocytochemical staining of H9C2 cells with WD repeat domain 1 antibody . Nuclei were stained blue with DAPI; WD repeat domain 1 was stained magenta with Alexa Fluor® 647. Images were taken using anti-Leica stellaris 5. Protein abundance based on laser Intensity and smart gain: Medium. Scale bar: 20 μ m.