

## Product datasheet for **TA425337**

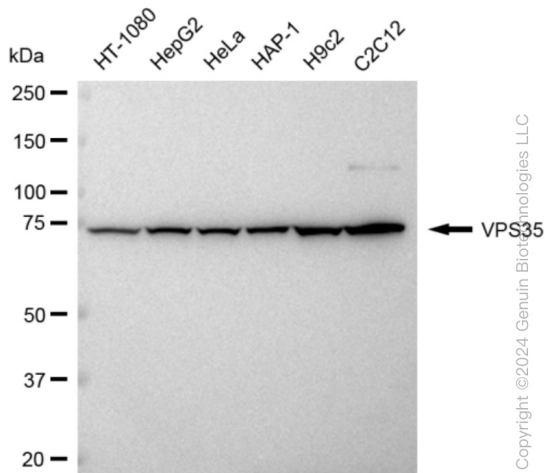
### VPS35 Rabbit Monoclonal Antibody [Clone ID: 23GB4260]

#### Product data:

<b>Product Type:</b>	Primary Antibodies
<b>Clone Name:</b>	23GB4260
<b>Applications:</b>	FC, ICC, WB
<b>Recommended Dilution:</b>	Western Blotting (WB): 1:1,000–1:5,000, Flow Cytometry (FCM): 1:2,000, Immunocytochemistry (IC): 1:100–1:1,000
<b>Reactivity:</b>	Human, Mouse, Rat
<b>Host:</b>	Rabbit
<b>Isotype:</b>	IgG
<b>Clonality:</b>	Monoclonal
<b>Immunogen:</b>	A synthesized peptide derived from human VPS35
<b>Formulation:</b>	Supplied in PBS (pH 7.4) containing 50% glycerol, and 0.02% sodium azide.
<b>Concentration:</b>	Lot dependent
<b>Purification:</b>	Affinity Purified
<b>Conjugation:</b>	Unconjugated
<b>Stability:</b>	Store at -20 °C for one year.
<b>Database Link:</b>	<a href="#">Q96QK1</a>
<b>Synonyms:</b>	FLJ10752; HVPS35; Maternal-Embryonic 3; MEM3; PARK17; Vacuolar Protein Sorting-Associated Protein 35; Vacuolar Protein Sorting 35 Homolog; Vacuolar Protein Sorting 35 Homolog (S. Cerevisiae); Vesicle Protein Sorting 35; VPS35; VPS35 Retromer Complex Component; VPS35, Retromer Complex Component

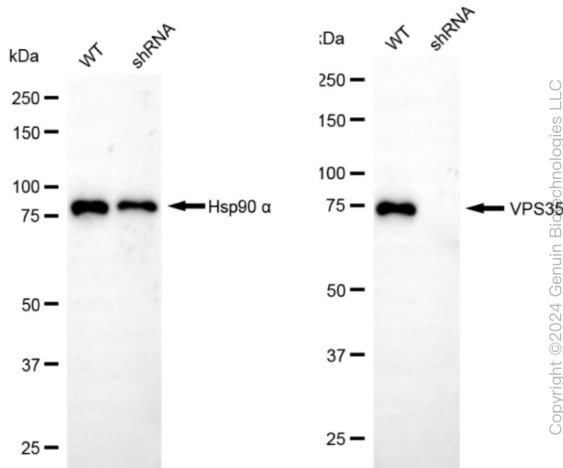


Product images:



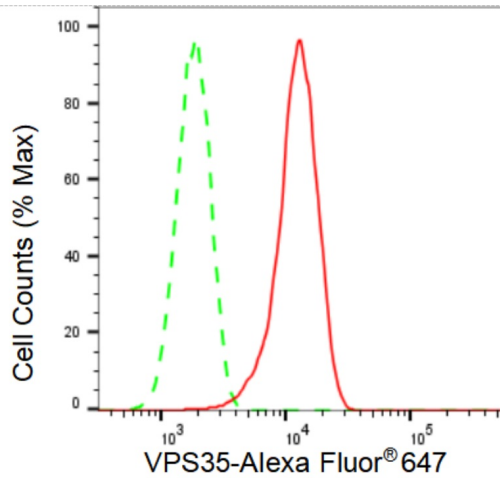
Copyright ©2024 Genuin Biotechnologies LLC

Western blotting analysis using anti-VPS35 antibody . Total cell lysates (30 µg) from various cell lines were loaded and separated by SDS-PAGE. The blot was incubated with anti-VPS35 antibody and HRP-conjugated goat anti-rabbit secondary antibody respectively. Image was developed using anti-FeQ™ ECL Substrate Kit .

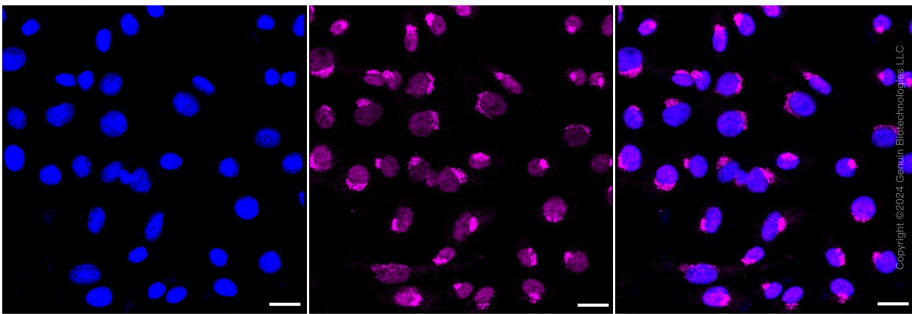


Copyright ©2024 Genuin Biotechnologies LLC

Western blotting analysis using anti-VPS35 antibody . VPS35 expression in wild type (WT) and VPS35 shRNA knockdown (KD) HeLa cells with 30 µg of total cell lysates . Hsp90 α serves as a loading control. The blot was incubated with anti-VPS35 antibody and HRP-conjugated goat anti-rabbit secondary antibody respectively. Image was developed using anti-FeQ™ ECL Substrate Kit .



Flow cytometric analysis of VPS35 expression in C2C12 cells using anti-VPS35 antibody . Green, isotype control; red, VPS35.



Immunocytochemical staining of C2C12 cells with VPS35 antibody . Nuclei were stained blue with DAPI; VPS35 was stained magenta with Alexa Fluor® 647. Images were taken using anti-Leica stellaris 5. Protein abundance based on laser Intensity and smart gain: Medium. Scale bar: 20 µm.