

Product datasheet for **TA425316**

USP5 Rabbit Monoclonal Antibody [Clone ID: 24GB2480]

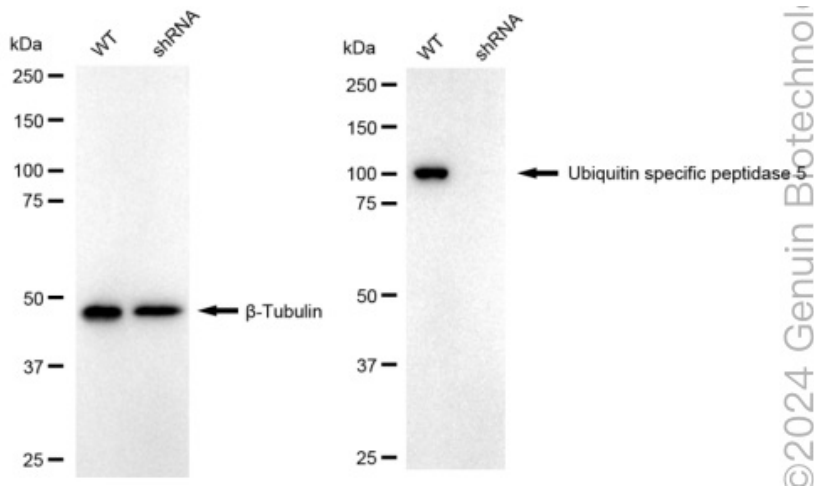
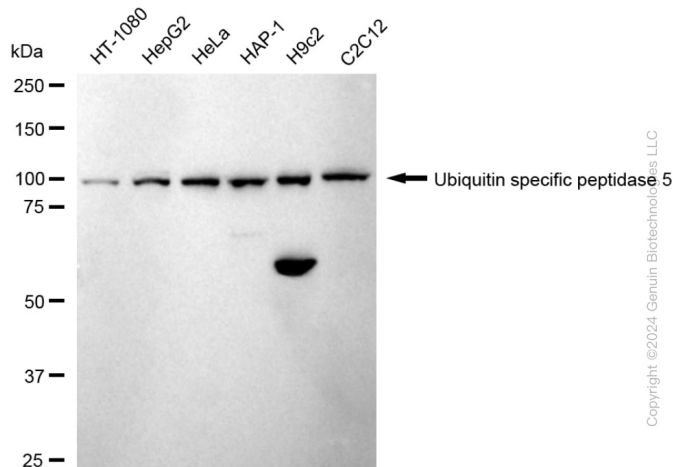
Product data:

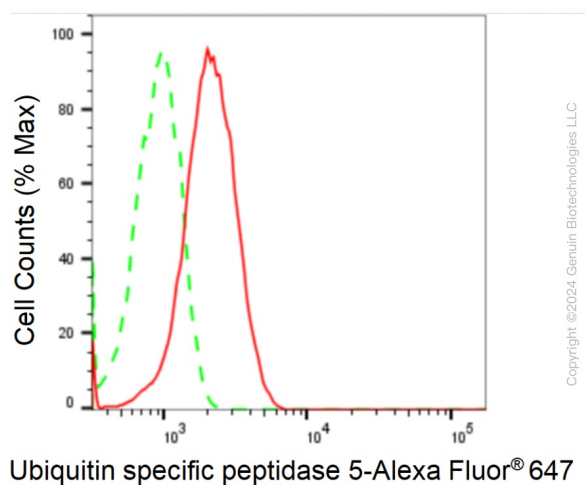
Product Type:	Primary Antibodies
Clone Name:	24GB2480
Applications:	FC, ICC, WB
Recommended Dilution:	Western Blotting (WB): 1:1,000-1:5,000, Flow Cytometry (FCM): 1:2,000, Immunocytochemistry (IC): 1:100-1:1,000
Reactivity:	Human, Mouse, Rat
Host:	Rabbit
Isotype:	IgG
Clonality:	Monoclonal
Immunogen:	A synthesized peptide derived from human USP5
Formulation:	Supplied in PBS (pH 7.4) containing 50% glycerol, and 0.02% sodium azide.
Concentration:	Lot dependent
Purification:	Affinity Purified
Conjugation:	Unconjugated
Stability:	Store at -20 °C for one year.
Database Link:	P45974
Synonyms:	Deubiquitinating Enzyme 5; EC 3.1.2.15; EC 3.4.19.12; Isopeptidase T; ISOT; IsoT; Testicular Tissue Protein Li 218; Ubiquitin-Specific-Processing Protease 5; Ubiquitin-Specific Protease-5 (Ubiquitin Isopeptidase T); Ubiquitin Carboxyl-Terminal Hydrolase 5; Ubiquitin Isopeptidase T; Ubiquitin Specific Peptidase 5; Ubiquitin Specific Peptidase 5 (Isopeptidase T); Ubiquitin Specific Protease 5 (Isopeptidase T); Ubiquitin Thioesterase 5; Ubiquitin Thiolesterase 5; USP5



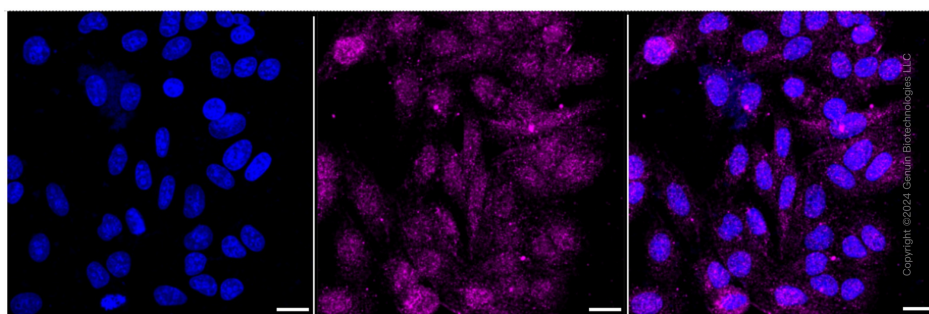
[View online »](#)

Product images:





Flow cytometric analysis of Ubiquitin specific peptidase 5 expression in HepG2 cells using anti-Usip5 antibody. Green, isotype control; red, Ubiquitin specific peptidase 5.



Immunocytochemical staining of HepG2 cells with anti-Usip5 antibody. Nuclei were stained blue with DAPI; Ubiquitin specific peptidase 5 was stained magenta with Alexa Fluor® 647. Images were taken using anti-Leica stellaris 5. Protein abundance based on laser Intensity and smart gain: Medium. Scale bar: 20 µm.