

Product datasheet for **TA425313**

USP14 Rabbit Monoclonal Antibody [Clone ID: 24GB2190]

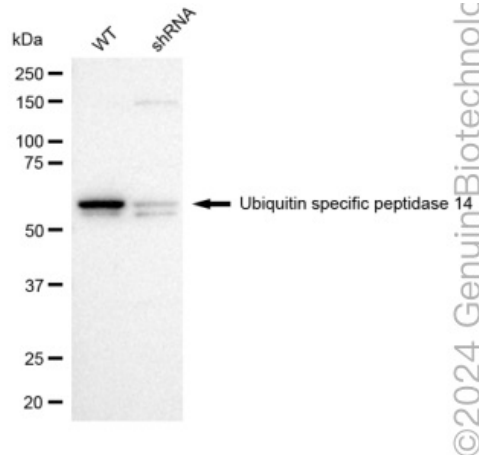
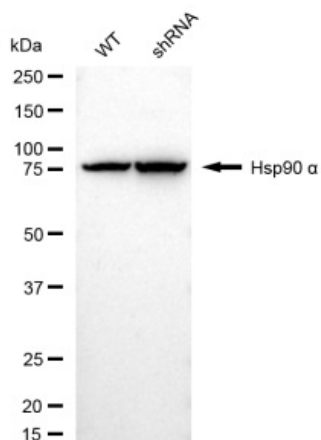
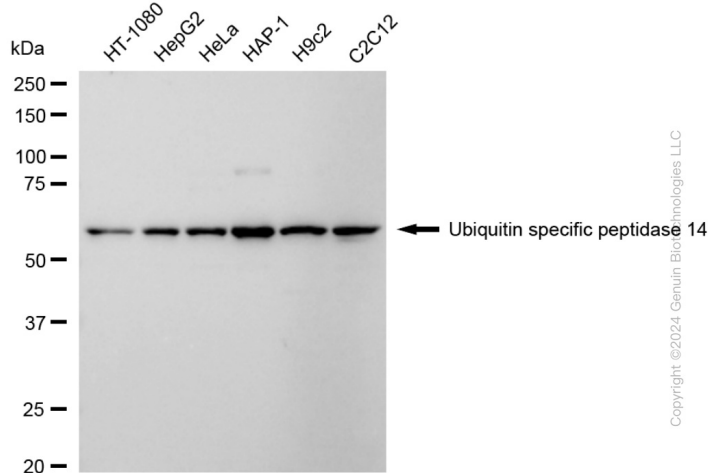
Product data:

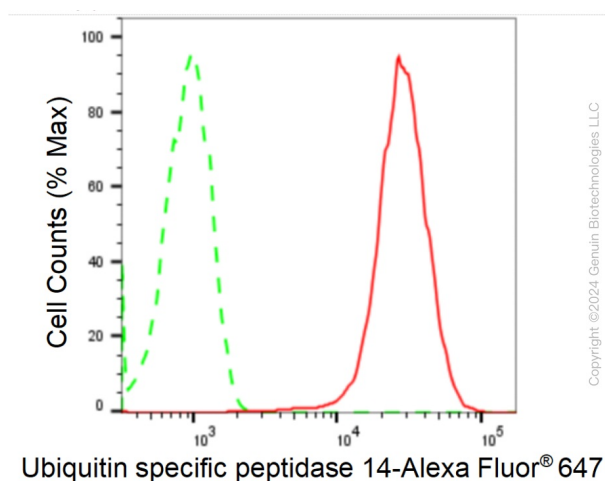
Product Type:	Primary Antibodies
Clone Name:	24GB2190
Applications:	FC, ICC, WB
Recommended Dilution:	Western Blotting (WB): 1:1,000-1:5,000, Flow Cytometry (FCM): 1:2,000, Immunocytochemistry (IC): 1:100-1:1,000
Reactivity:	Human, Mouse, Rat
Host:	Rabbit
Isotype:	IgG
Clonality:	Monoclonal
Immunogen:	A synthesized peptide derived from human USP14
Formulation:	Supplied in PBS (pH 7.4) containing 50% glycerol, and 0.02% sodium azide.
Concentration:	Lot dependent
Purification:	Affinity Purified
Conjugation:	Unconjugated
Stability:	Store at -20 °C for one year.
Database Link:	P54578
Synonyms:	Deubiquitinating Enzyme 14; EC 3.1.2.15; EC 3.4.19.12; TGT; TRNA-Guanine Transglycosylase, 60-KD Subunit; Ubiquitin-Specific-Processing Protease 14; Ubiquitin-Specific Processing Protease 14; Ubiquitin Carboxyl-Terminal Hydrolase 14; Ubiquitin Specific Peptidase 14; Ubiquitin Specific Peptidase 14 (TRNA-Guanine Transglycosylase); Ubiquitin Specific Protease 14 (TRNA-Guanine Transglycosylase); Ubiquitin Thioesterase 14; Ubiquitin Thiolesterase 14; Ubp6; USP14



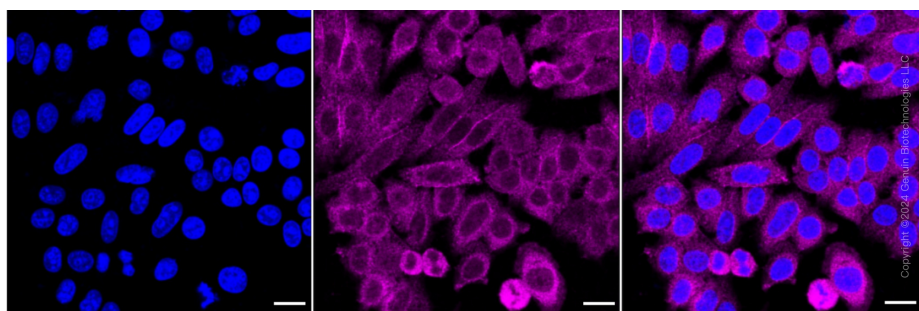
[View online »](#)

Product images:





Flow cytometric analysis of Ubiquitin specific peptidase 14 expression in HepG2 cells using anti-Ubiquitin specific peptidase 14 antibody . Green, isotype control; red, Ubiquitin specific peptidase 14.



Immunocytochemical staining of HepG2 cells with anti-Ubiquitin specific peptidase 14 antibody . Nuclei were stained blue with DAPI; Ubiquitin specific peptidase 14 was stained magenta with Alexa Fluor® 647. Images were taken using anti-Leica stellaris 5. Protein abundance based on laser Intensity and smart gain: Medium. Scale bar: 20 μ m.