

## Product datasheet for **TA425312**

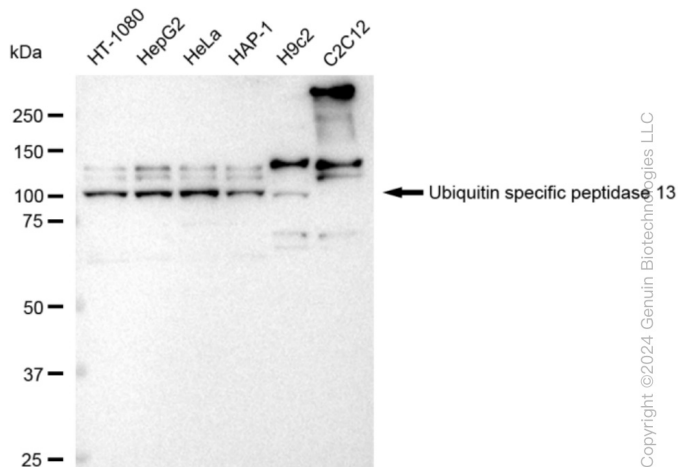
### USP13 Rabbit Monoclonal Antibody [Clone ID: 23GB4250]

#### Product data:

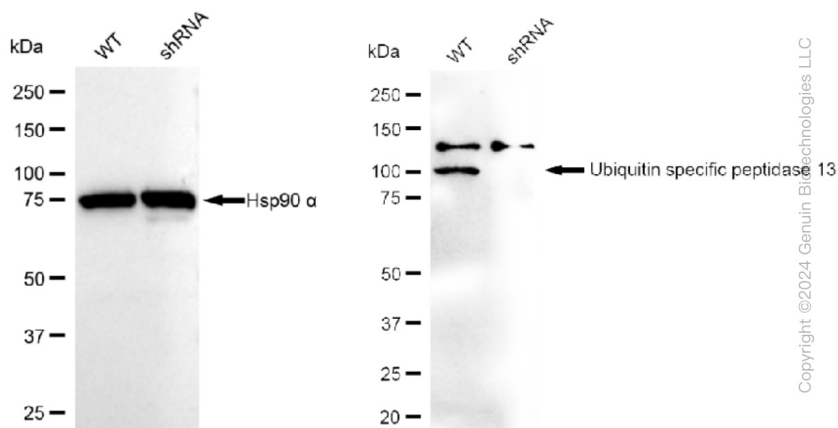
Product Type:	Primary Antibodies
Clone Name:	23GB4250
Applications:	FC, ICC, WB
Recommended Dilution:	Western Blotting (WB): 1:1,000-1:5,000, Flow Cytometry (FCM): 1:2,000, Immunocytochemistry (IC): 1:100-1:1,000
Reactivity:	Human, Rat
Host:	Rabbit
Isotype:	IgG
Clonality:	Monoclonal
Immunogen:	A synthesized peptide derived from human USP13
Formulation:	Supplied in PBS (pH 7.4) containing 50% glycerol, and 0.02% sodium azide.
Concentration:	Lot dependent
Purification:	Affinity Purified
Conjugation:	Unconjugated
Stability:	Store at -20 °C for one year.
Database Link:	<a href="#">Q92995</a>
Synonyms:	Deubiquitinating Enzyme 13; EC 3.1.2.15; EC 3.4.19.12; Isopeptidase T-3; ISOT-3; IsoT-3; ISOT3; Ubiquitin-Specific-Processing Protease 13; Ubiquitin Carboxyl-Terminal Hydrolase 13; Ubiquitin Specific Peptidase 13; Ubiquitin Specific Peptidase 13 (Isopeptidase T-3); Ubiquitin Specific Protease 13 (Isopeptidase T-3); Ubiquitin Thioesterase 13; Ubiquitin Thiolesterase 13; USP13

[View online »](#)

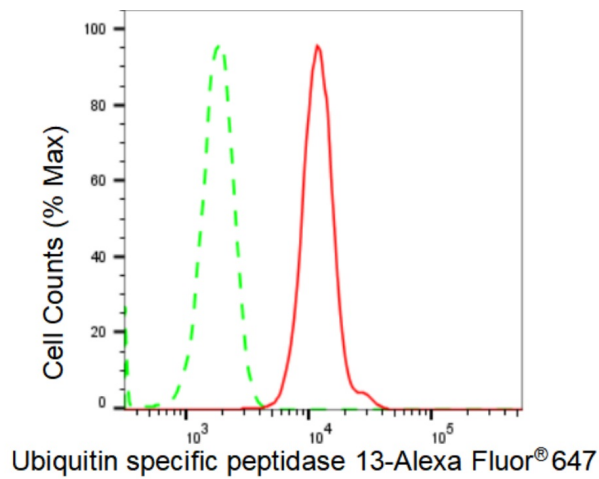
## Product images:



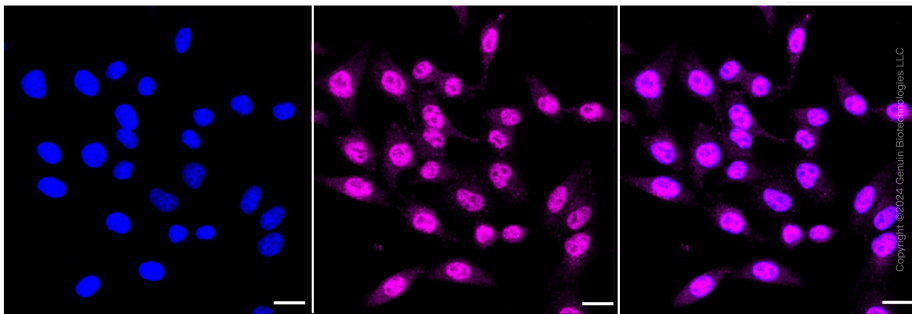
Western blotting analysis using anti-Ubiquitin specific peptidase 13 antibody . Total cell lysates (30 µg) from various cell lines were loaded and separated by SDS-PAGE. The blot was incubated with anti-Ubiquitin specific peptidase 13 antibody and HRP-conjugated goat anti-rabbit secondary antibody respectively. Image was developed using anti-FeQ™ ECL Substrate Kit .



Western blotting analysis using anti-Ubiquitin specific peptidase 13 antibody . Ubiquitin specific peptidase 13 expression in wild type (WT) and Ubiquitin specific peptidase 13 shRNA knockdown (KD) HeLa cells with 30 µg of total cell lysates . β-Tubulin serves as a loading control. The blot was incubated with anti-Ubiquitin specific peptidase 13 antibody and HRP-conjugated goat anti-rabbit secondary antibody respectively. Image was developed using anti-FeQ™ ECL Substrate Kit .



Flow cytometric analysis of Ubiquitin specific peptidase 13 expression in HepG2 cells using anti-Ubiquitin specific peptidase 13 antibody . Green, isotype control; red, Ubiquitin specific peptidase 13.



Immunocytochemical staining of HepG2 cells with Ubiquitin specific peptidase 13 antibody . Nuclei were stained blue with DAPI; Ubiquitin specific peptidase 13 was stained magenta with Alexa Fluor® 647. Images were taken using anti-Leica stellaris 5. Protein abundance based on laser Intensity and smart gain: Medium. Scale bar: 20 µm.