

Product datasheet for **TA425305**

TSC2 Rabbit Monoclonal Antibody [Clone ID: 23GB1120]

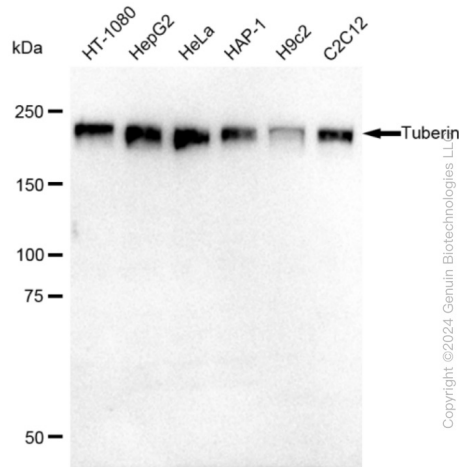
Product data:

Product Type:	Primary Antibodies
Clone Name:	23GB1120
Applications:	FC, WB
Recommended Dilution:	Western Blotting (WB): 1:1,000-1:2,500, Flow Cytometry (FCM): 1:2,000
Reactivity:	Human, Mouse, Rat
Host:	Rabbit
Isotype:	IgG
Clonality:	Monoclonal
Immunogen:	Recombinant protein of human Tuberin
Formulation:	Supplied in PBS (pH 7.4) containing 50% glycerol, and 0.02% sodium azide.
Concentration:	Lot dependent
Purification:	Affinity Purified
Conjugation:	Unconjugated
Stability:	Store at -20 °C for one year.
Database Link:	P49815
Synonyms:	LAM; PPP1R160; Protein Phosphatase 1, Regulatory Subunit 160; TSC4; Tuberin; Tuberous Sclerosis 2; Tuberous Sclerosis 2 Protein

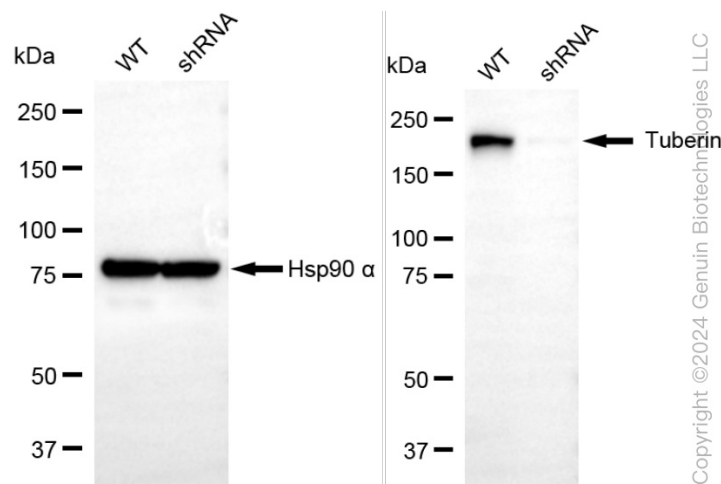


[View online »](#)

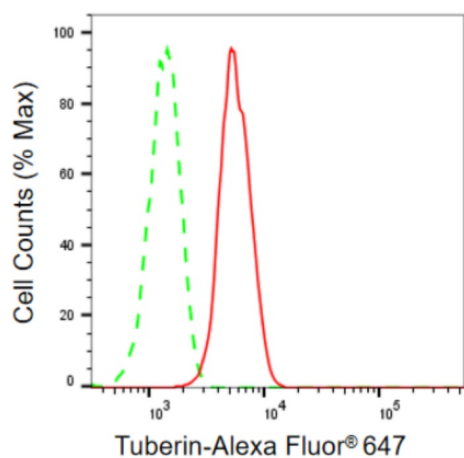
Product images:



Western blotting analysis using anti-Tuberin antibody . Total cell lysates (30 µg) from various cell lines were loaded and separated by SDS-PAGE. The blot was incubated with anti-Tuberin antibody and HRP-conjugated goat anti-rabbit secondary antibody respectively. Image was developed using anti-FeQ™ ECL Substrate Kit .



Western blotting analysis using anti-Tuberin antibody . Tuberin expression in wild type (WT) and Tuberin(TSC2) shRNA knockdown (KD) HeLa cells with 30 µg of total cell lysates. Hsp90 α serves as a loading control. The blot was incubated with anti-Tuberin antibody and HRP-conjugated goat anti-rabbit secondary antibody respectively. Image was developed using anti-FeQ™ ECL Substrate Kit .



Copyright ©2024 Genuin Biotechnologies LLC

Flow cytometric analysis of Tuberin expression in HepG2 cells using anti-Tuberin antibody . Green, isotype control; Red, Tuberin.