

Product datasheet for **TA425301**

TPBG Rabbit Monoclonal Antibody [Clone ID: 24GB2035]

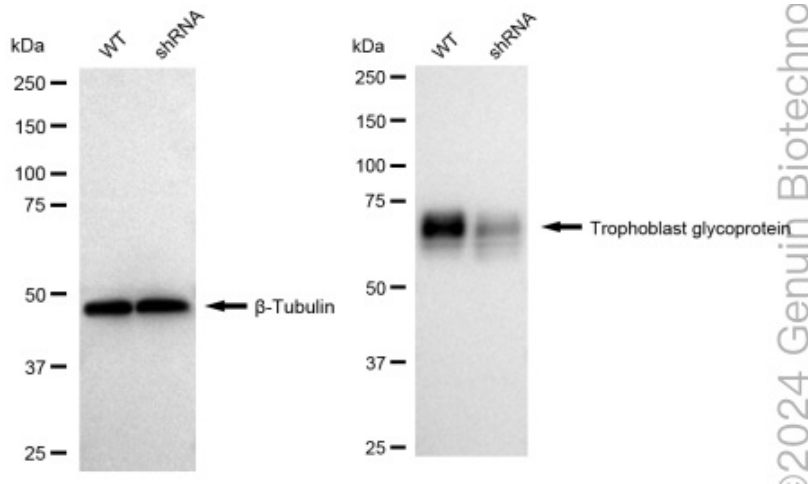
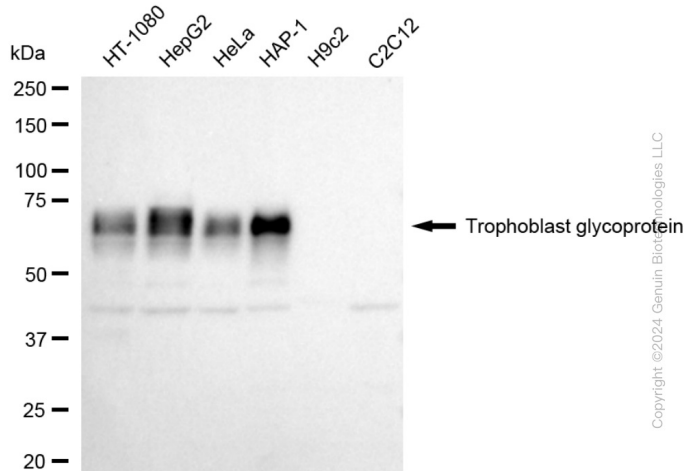
Product data:

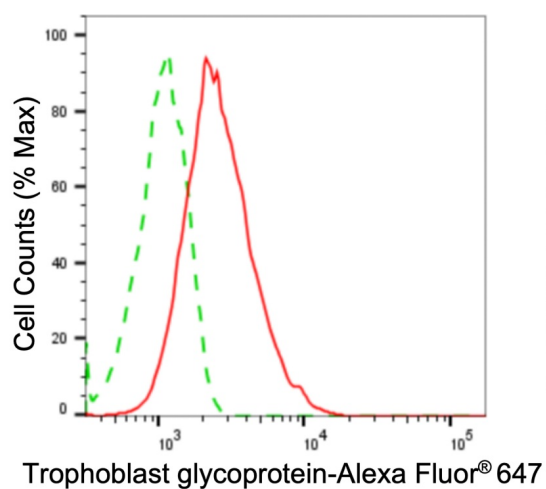
Product Type:	Primary Antibodies
Clone Name:	24GB2035
Applications:	FC, WB
Recommended Dilution:	Western Blotting (WB): 1:1,000-1:5,000, Flow Cytometry (FCM): 1:2,000
Reactivity:	Human
Host:	Rabbit
Isotype:	IgG
Clonality:	Monoclonal
Immunogen:	A synthesized peptide derived from human 5T4
Formulation:	Supplied in PBS (pH 7.4) containing 50% glycerol, and 0.02% sodium azide.
Concentration:	Lot dependent
Purification:	Affinity Purified
Conjugation:	Unconjugated
Stability:	Store at -20 °C for one year.
Database Link:	Q13641
Synonyms:	5T4; 5T4 Oncofetal Antigen; 5T4 Oncofetal Trophoblast Glycoprotein; 5T4 Oncotrophoblast Glycoprotein; 5T4-AG; 5T4AG; M6P1; TPBG; Trophoblast Glycoprotein; WAI1; Wnt-Activated Inhibitory Factor 1



[View online »](#)

Product images:





Flow cytometric analysis of Trophoblast glycoprotein expression in HAP-1 cells using anti-Trophoblast glycoprotein antibody . Green, isotype control; red, Trophoblast glycoprotein.