

Product datasheet for **TA425295**

TMEM43 Rabbit Monoclonal Antibody [Clone ID: 24GB2325]

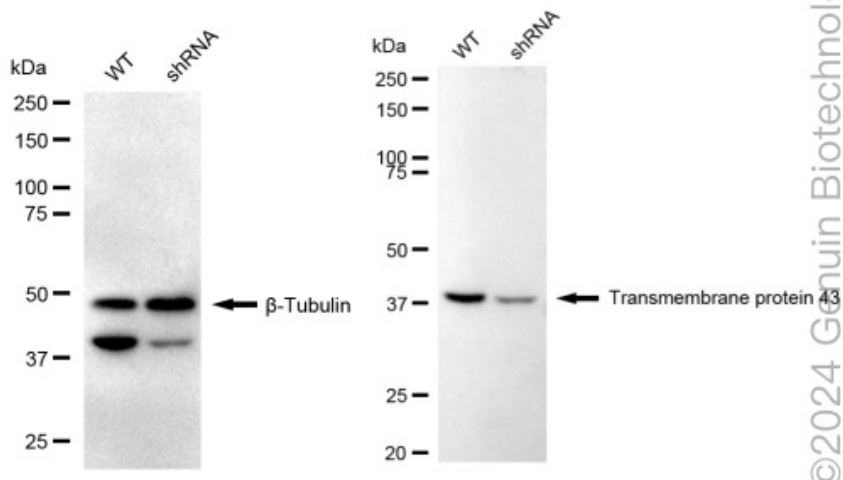
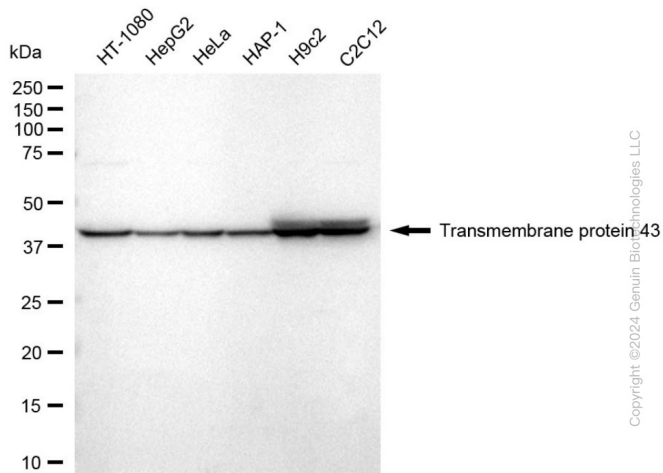
Product data:

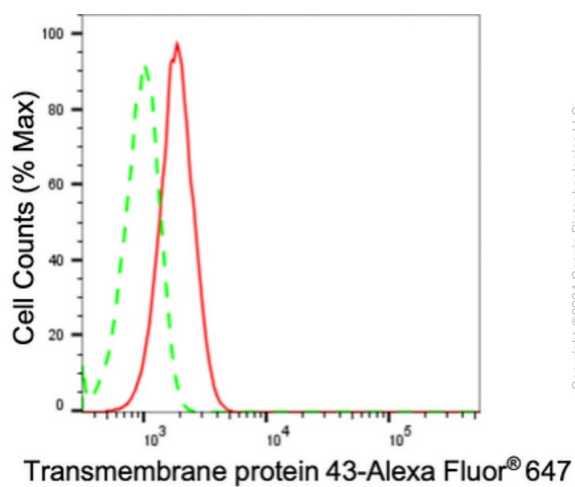
Product Type:	Primary Antibodies
Clone Name:	24GB2325
Applications:	FC, WB
Recommended Dilution:	Western Blotting (WB): 1:1,000-1:5,000, Flow Cytometry (FCM): 1:2,000
Reactivity:	Human, Mouse, Rat
Host:	Rabbit
Isotype:	IgG
Clonality:	Monoclonal
Immunogen:	A synthesized peptide derived from human TMEM43
Formulation:	Supplied in PBS (pH 7.4) containing 50% glycerol, and 0.02% sodium azide.
Concentration:	Lot dependent
Purification:	Affinity Purified
Conjugation:	Unconjugated
Stability:	Store at -20 °C for one year.
Database Link:	Q9BTV4
Synonyms:	Arrhythmogenic Right Ventricular Dysplasia 5; ARVC5; ARVD5; AUNA2; AUNA3; DKFZp586G1919; EDMD7; LUMA; MGC3222; Protein LUMA; TMEM43; Transmembrane Protein 43



[View online »](#)

Product images:





Flow cytometric analysis of Transmembrane protein 43 expression in C2C12 cells using anti-Transmembrane protein 43 antibody . Green, isotype control; red, Transmembrane protein 43.