

Product datasheet for **TA425289**

TNFRSF12A Rabbit Monoclonal Antibody [Clone ID: 24GB2070]

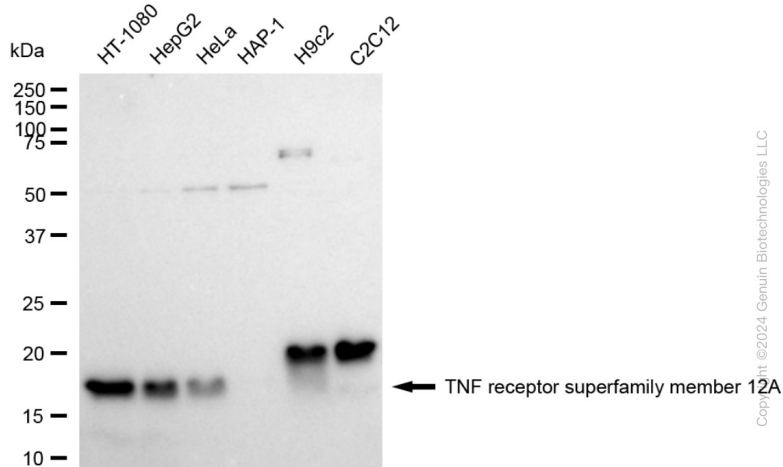
Product data:

Product Type:	Primary Antibodies
Clone Name:	24GB2070
Applications:	FC, WB
Recommended Dilution:	Western Blotting (WB): 1:1,000-1:5,000, Flow Cytometry (FCM): 1:2,000
Reactivity:	Human
Host:	Rabbit
Isotype:	IgG
Clonality:	Monoclonal
Immunogen:	A synthesized peptide derived from human TWEAKR
Formulation:	Supplied in PBS (pH 7.4) containing 50% glycerol, and 0.02% sodium azide.
Concentration:	Lot dependent
Purification:	Affinity Purified
Conjugation:	Unconjugated
Stability:	Store at -20 °C for one year.
Database Link:	Q9NP84
Synonyms:	CD266; CD266 Antigen; FGF-Inducible 14; Fibroblast Growth Factor-Inducible Immediate-Early Response Protein 14; FN14; TNF Receptor Superfamily Member 12A; TNFRSF12A; Tumor Necrosis Factor Receptor Superfamily, Member 12A; Tumor Necrosis Factor Receptor Superfamily Member 12A; Tweak-Receptor; TweakR; Type I Transmembrane Protein Fn14

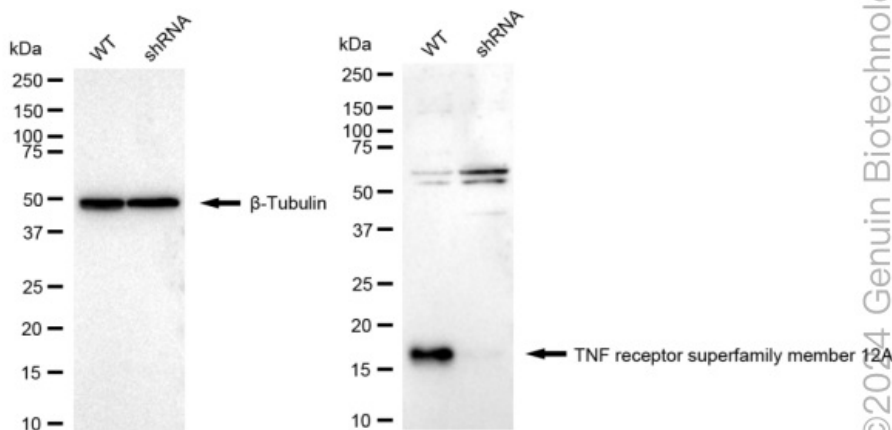


[View online »](#)

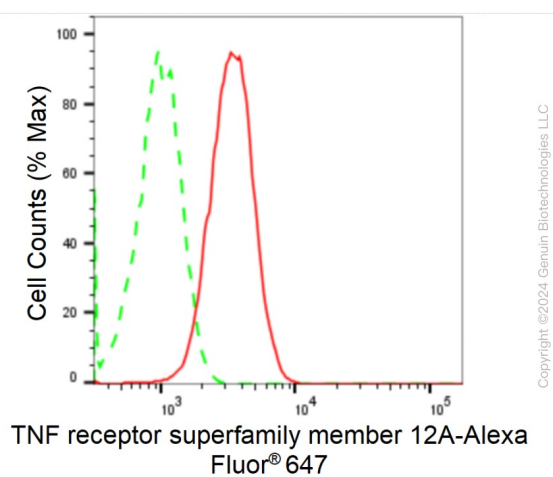
Product images:



Western blotting analysis using anti-TNF receptor superfamily member 12A antibody . Total cell lysates (30 µg) from various cell lines were loaded and separated by SDS-PAGE. The blot was incubated with anti-TNF receptor superfamily member 12A antibody and HRP-conjugated goat anti-rabbit secondary antibody respectively. Image was developed using anti-FeQ™ ECL Substrate Kit .



Western blotting analysis using anti-TNF receptor superfamily member 12A antibody . TNF receptor superfamily member 12A expression in wild type (WT) and TNF receptor superfamily member 12A shRNA knockdown (KD) HeLa cells with 20 µg of total cell lysates . β-Tubulin serves as a loading control. The blot was incubated with anti-TNF receptor superfamily member 12A antibody and HRP-conjugated goat anti-rabbit secondary antibody respectively. Image was developed using anti-NaQ™ ECL Substrate Kit .



Flow cytometric analysis of TNF receptor superfamily member 12A expression in HT-1080 cells using anti-TNF receptor superfamily member 12A antibody . Green, isotype control; red, TNF receptor superfamily member 12A.