

## Product datasheet for **TA425282**

### TRIP10 Rabbit Monoclonal Antibody [Clone ID: 23GB4705]

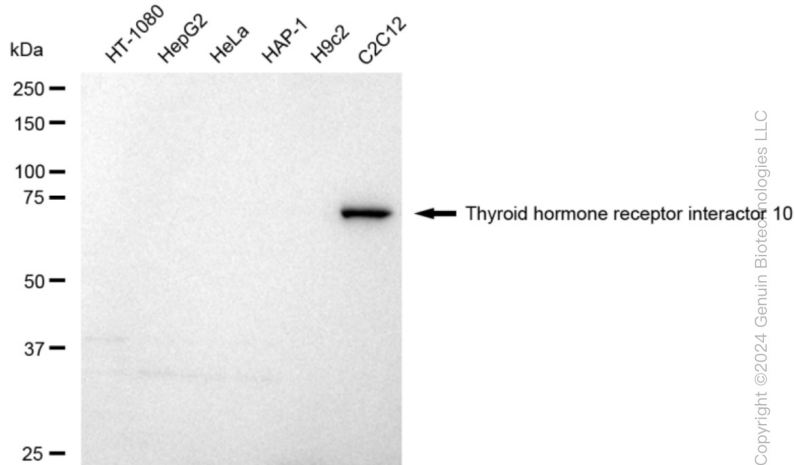
#### Product data:

Product Type:	Primary Antibodies
Clone Name:	23GB4705
Applications:	FC, ICC, WB
Recommended Dilution:	Western Blotting (WB): 1:1,000-1:5,000, Flow Cytometry (FCM): 1:2,000, Immunocytochemistry (IC): 1:100-1:1,000
Reactivity:	Mouse
Host:	Rabbit
Isotype:	IgG
Clonality:	Monoclonal
Immunogen:	A synthesized peptide derived from human Cip4
Formulation:	Supplied in PBS (pH 7.4) containing 50% glycerol, and 0.02% sodium azide.
Concentration:	Lot dependent
Purification:	Affinity Purified
Conjugation:	Unconjugated
Stability:	Store at -20 °C for one year.
Database Link:	<a href="#">Q15642</a>
Synonyms:	Cdc42-Interacting Protein; Cdc42-Interacting Protein 4; CIP4; HSTP; Protein Felic; Salt Tolerant Protein; Salt Tolerator; STOT; STP; Thyroid Hormone Receptor Interactor 10; Thyroid Receptor-Interacting Protein 10; TR-Interacting Protein 10; TRIP-10; TRIP10

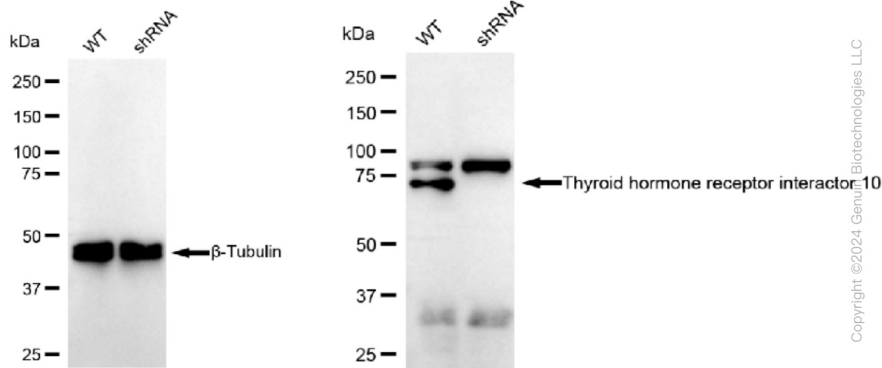


[View online »](#)

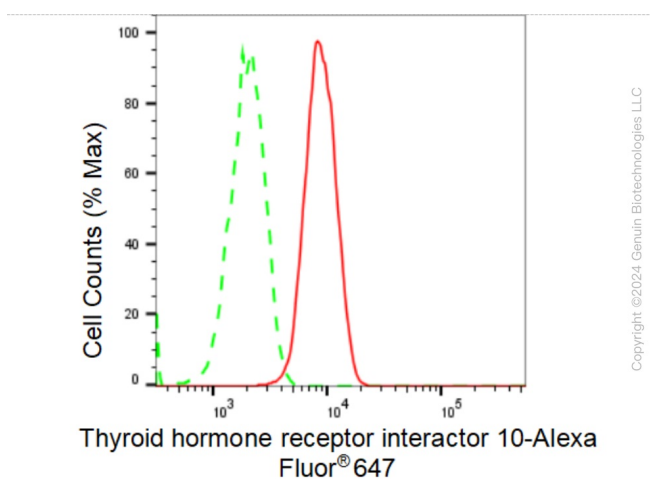
## Product images:



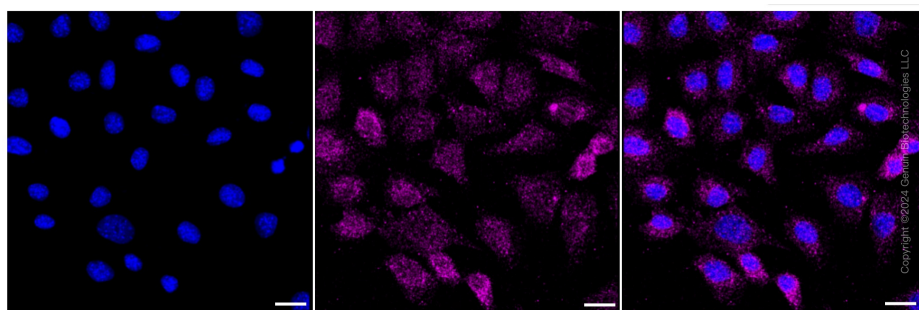
Western blotting analysis using anti-Thyroid hormone receptor interactor 10 antibody . Total cell lysates (30 µg) from various cell lines were loaded and separated by SDS-PAGE. The blot was incubated with anti-Thyroid hormone receptor interactor 10 antibody and HRP-conjugated goat anti-rabbit secondary antibody respectively. Image was developed using anti-FeQ™ ECL Substrate Kit .



Western blotting analysis using anti-Thyroid hormone receptor interactor 10 antibody . Thyroid hormone receptor interactor 10 expression in wild type (WT) and Thyroid hormone receptor interactor 10 shRNA knockdown (KD) HeLa cells with 30 µg of total cell lysates . β-Tubulin serves as a loading control. The blot was incubated with anti-Thyroid hormone receptor interactor 10 antibody and HRP-conjugated goat anti-rabbit secondary antibody respectively. Image was developed using anti-FeQ™ ECL Substrate Kit .



Flow cytometric analysis of Thyroid hormone receptor interactor 10 expression in C2C12 cells using anti-Thyroid hormone receptor interactor 10 antibody . Green, isotype control; red, Thyroid hormone receptor interactor 10.



Immunocytochemical staining of C2C12 cells with Thyroid hormone receptor interactor 10 antibody . Nuclei were stained blue with DAPI; Thyroid hormone receptor interactor 10 was stained magenta with Alexa Fluor® 647. Images were taken using anti-Leica stellaris 5. Protein abundance based on laser Intensity and smart gain: Medium. Scale bar: 20  $\mu$ m.