

Product datasheet for **TA425270**

TMF1 Rabbit Monoclonal Antibody [Clone ID: 24GB1965]

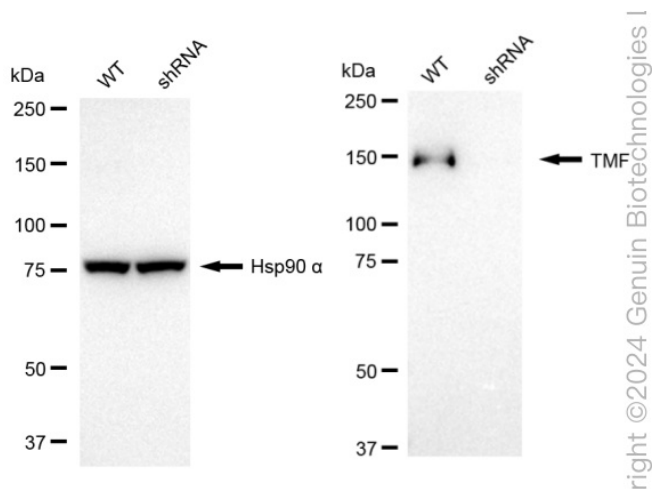
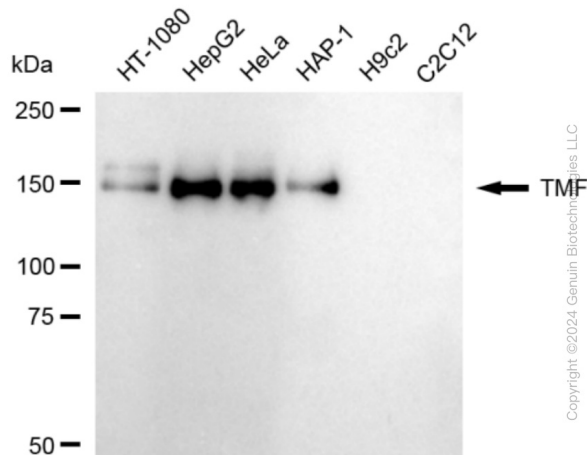
Product data:

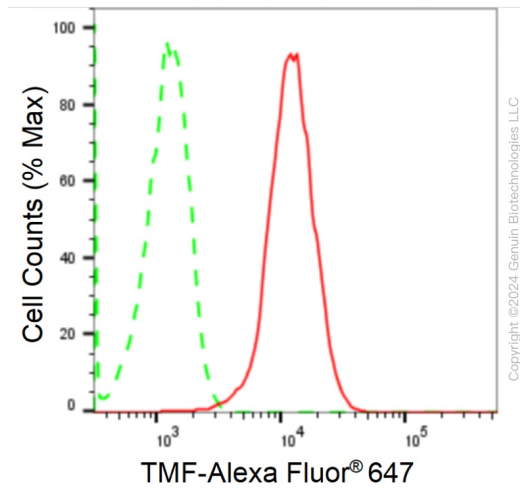
| | |
|-----------------------|---|
| Product Type: | Primary Antibodies |
| Clone Name: | 24GB1965 |
| Applications: | FC, ICC, WB |
| Recommended Dilution: | Western Blotting (WB): 1:1,000-1:5,000, Flow Cytometry (FCM): 1:2,000, Immunocytochemistry (IC): 1:100-1:1,000 |
| Reactivity: | Human |
| Host: | Rabbit |
| Isotype: | IgG |
| Clonality: | Monoclonal |
| Immunogen: | A synthesized peptide derived from human TMF |
| Formulation: | Supplied in PBS (pH 7.4) containing 50% glycerol, and 0.02% sodium azide. |
| Concentration: | Lot dependent |
| Purification: | Affinity Purified |
| Conjugation: | Unconjugated |
| Stability: | Store at -20 °C for one year. |
| Database Link: | P82094 |
| Synonyms: | Androgen Receptor-Associated Protein Of 160 KDa; Androgen Receptor Coactivator 160 KDa Protein; ARA160; TATA Element Modulatory Factor; TATA Element Modulatory Factor 1; TMF; TMF1 |



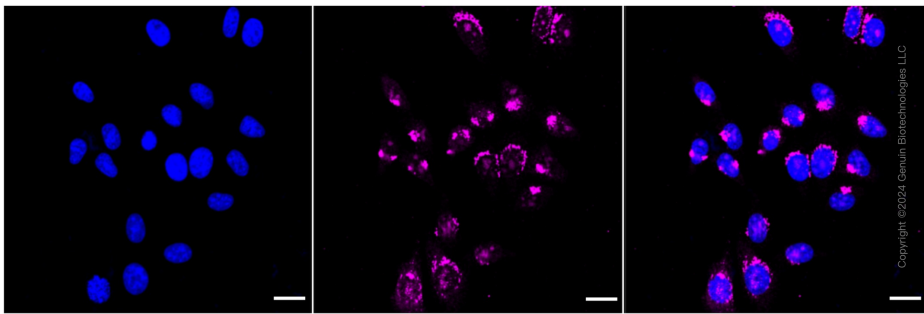
[View online »](#)

Product images:





Flow cytometric analysis of TMF expression in HepG2 cells using anti-TMF antibody . Green, isotype control; red, TMF.



Immunocytochemical staining of HepG2 cells with anti-TMF antibody . Nuclei were stained blue with DAPI; TMF was stained magenta with Alexa Fluor® 647. Images were taken using anti-Leica stellaris 5. Protein abundance based on laser Intensity and smart gain: Medium. Scale bar: 20 μ m.