

Product datasheet for **TA425259**

SDCBP Rabbit Monoclonal Antibody [Clone ID: 23GB2185]

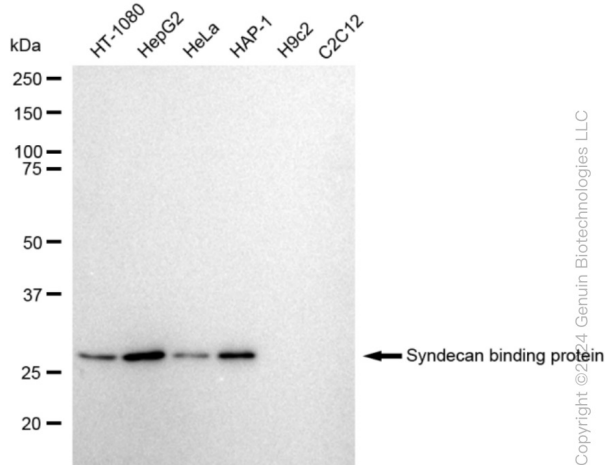
Product data:

Product Type:	Primary Antibodies
Clone Name:	23GB2185
Applications:	FC, ICC, WB
Recommended Dilution:	Western Blotting (WB): 1:1,000-1:5,000, Flow Cytometry (FCM): 1:2,000, Immunocytochemistry (IC): 1:100-1:1,000
Reactivity:	Human
Host:	Rabbit
Isotype:	IgG
Clonality:	Monoclonal
Immunogen:	A synthesized peptide derived from human Syntenin
Formulation:	Supplied in PBS (pH 7.4) containing 50% glycerol, and 0.02% sodium azide.
Concentration:	Lot dependent
Purification:	Affinity Purified
Conjugation:	Unconjugated
Stability:	Store at -20 °C for one year.
Database Link:	Q00560
Synonyms:	MDA-9; MDA9; Melanoma Differentiation-Associated Protein 9; Melanoma Differentiation Associated Protein-9; Pro-TGF-Alpha Cytoplasmic Domain-Interacting Protein 18; Scaffold Protein Pbp1; SDCBP; SDCBP1; ST1; SYCL; Syndecan-Binding Protein 1; Syndecan Binding Protein; Syndecan Binding Protein (Syntenin); Syntenin; Syntenin-1; TACIP18

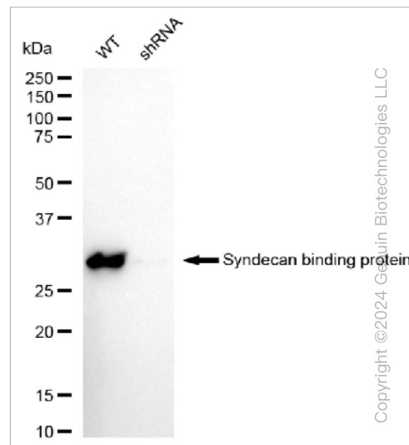
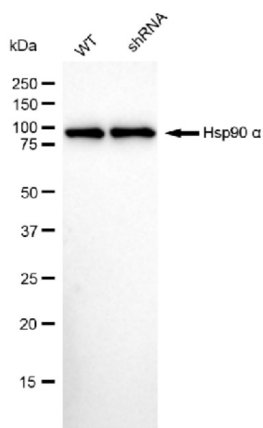


[View online »](#)

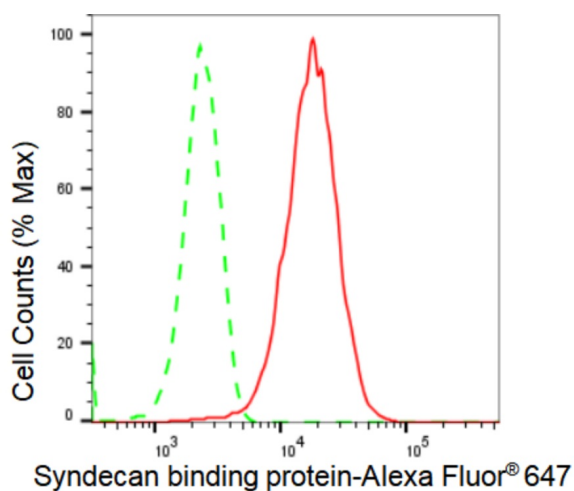
Product images:



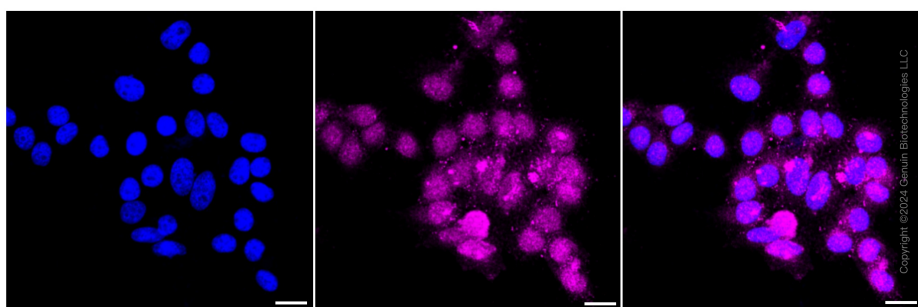
Western blotting analysis using anti-Syndecan binding protein antibody . Total cell lysates (30 µg) from various cell lines were loaded and separated by SDS-PAGE. The blot was incubated with anti-Syndecan binding protein antibody and HRP-conjugated goat anti-rabbit secondary antibody respectively. Image was developed using anti-FeQ™ ECL Substrate Kit .



Western blotting analysis using anti-Syndecan binding protein antibody . Syndecan binding protein expression in wild type (WT) and syndecan binding protein shRNA knockdown (KD) HeLa cells with 30 µg of total cell lysates . β-Tubulin serves as a loading control. The blot was incubated with anti-Syndecan binding protein antibody and HRP-conjugated goat anti-rabbit secondary antibody respectively. Image was developed using anti-FeQ™ ECL Substrate Kit .



Flow cytometric analysis of Syndecan binding protein expression in HepG2 cells using anti-Syndecan binding protein antibody . Green, isotype control; red, Syndecan binding protein.



Immunocytochemical staining of HepG2 cells with Syndecan binding protein antibody . Nuclei were stained blue with DAPI; Syndecan binding protein was stained magenta with Alexa Fluor® 647. Images were taken using anti-Leica stellaris 5. Protein abundance based on laser Intensity and smart gain: Medium. Scale bar: 20 µm.