

Product datasheet for **TA425251**

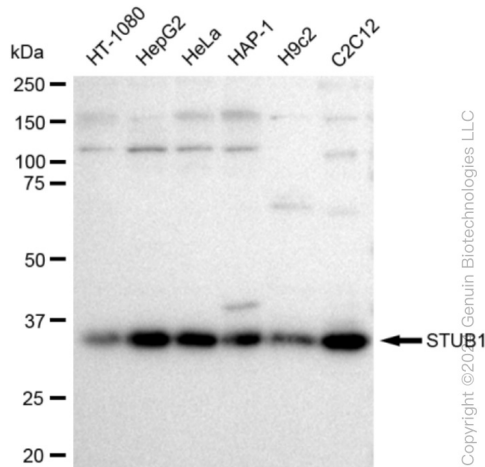
STUB1 Rabbit Monoclonal Antibody [Clone ID: 23GB2345]

Product data:

Product Type:	Primary Antibodies
Clone Name:	23GB2345
Applications:	FC, ICC, WB
Recommended Dilution:	Western Blotting (WB): 1:1,000-1:5,000, Flow Cytometry (FCM): 1:2,000, Immunocytochemistry (IC): 1:100-1:1,000
Reactivity:	Human, Mouse, Rat
Host:	Rabbit
Isotype:	IgG
Clonality:	Monoclonal
Immunogen:	A synthesized peptide derived from human STUB1
Formulation:	Supplied in PBS (pH 7.4) containing 50% glycerol, and 0.02% sodium azide.
Concentration:	Lot dependent
Purification:	Affinity Purified
Conjugation:	Unconjugated
Stability:	Store at -20 °C for one year.
Database Link:	Q9UNE7
Synonyms:	Antigen NY-CO-7; Carboxy Terminus Of Hsp70-Interacting Protein; CHIP; CLL-Associated Antigen KW-8; E3 Ubiquitin-Protein Ligase CHIP; EC 2.3.2.27; Heat Shock Protein A Binding Protein 2 (C-Terminal); HSPABP2; NY-CO-7; RING-Type E3 Ubiquitin; SCA48; SCAR16; SDCCAG7; Serologically Defined Colon Cancer Antigen 7; STIP1 Homology And U-Box Containing Protein 1; STIP1 Homology And U-Box Containing Protein 1, E3 Ubiquitin Protein Ligase; STIP1 Homology And U Box-Containing Protein 1; STUB1; Transferase CHIP; UBOX1

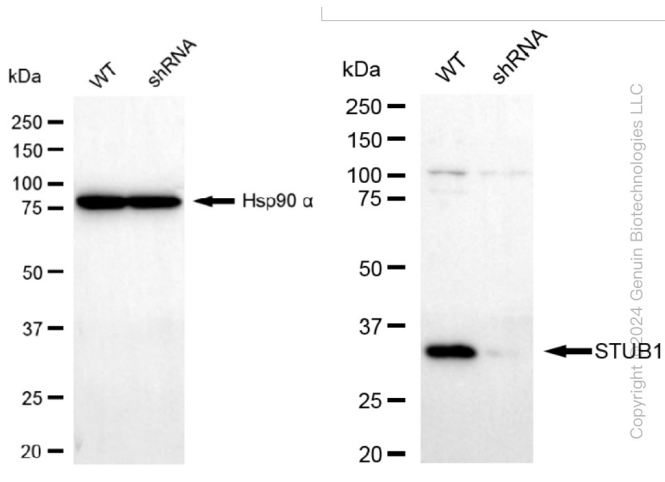


[View online »](#)

Product images:


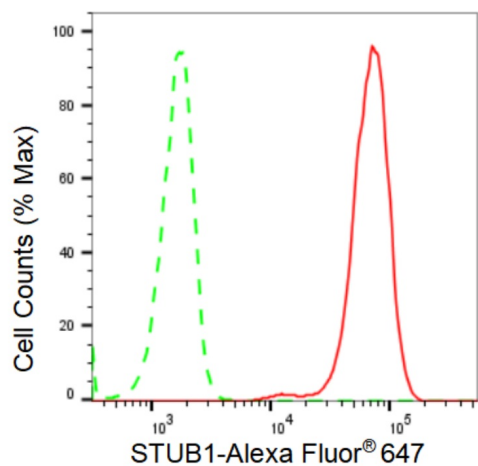
Copyright ©2024 Genuin Biotechnologies LLC

Western blotting analysis using anti-STUB1 antibody . Total cell lysates (30 µg) from various cell lines were loaded and separated by SDS-PAGE. The blot was incubated with anti-STUB1 antibody and HRP-conjugated goat anti-rabbit secondary antibody respectively. Image was developed using anti-FeQ™ ECL Substrate Kit .



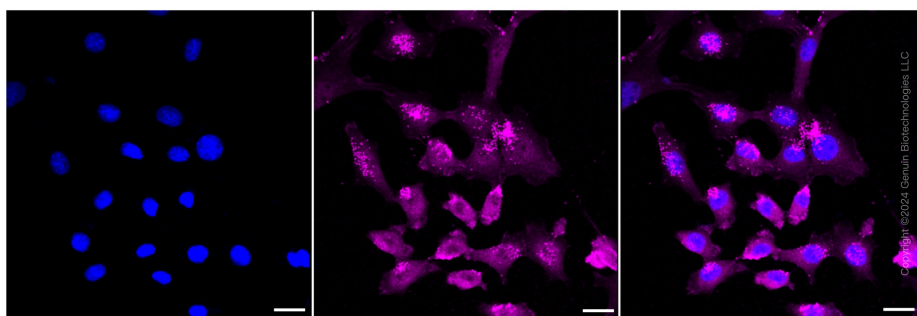
Copyright ©2024 Genuin Biotechnologies LLC

Western blotting analysis using anti-STUB1 antibody . STUB1 expression in wild type (WT) and STUB1 shRNA knockdown (KD) HeLa cells with 30 µg of total cell lysates . β-Tubulin serves as a loading control. The blot was incubated with anti-STUB1 antibody and HRP-conjugated goat anti-rabbit secondary antibody respectively. Image was developed using anti-FeQ™ ECL Substrate Kit .



Copyright ©2024 Genuin Biotechnologies LLC

Flow cytometric analysis of STUB1 expression in C2C12 cells using anti-STUB1 antibody . Green, isotype control; red, STUB1.



Copyright ©2024 Genuin Biotechnologies LLC

Immunocytochemical staining of C2C12 cells with STUB1 antibody . Nuclei were stained blue with DAPI; STUB1 was stained magenta with Alexa Fluor® 647. Images were taken using anti-Leica stellaris 5. Protein abundance based on laser Intensity and smart gain: Medium. Scale bar: 20 μ m.