

Product datasheet for **TA425231**

SORT1 Rabbit Monoclonal Antibody [Clone ID: 23GB4170]

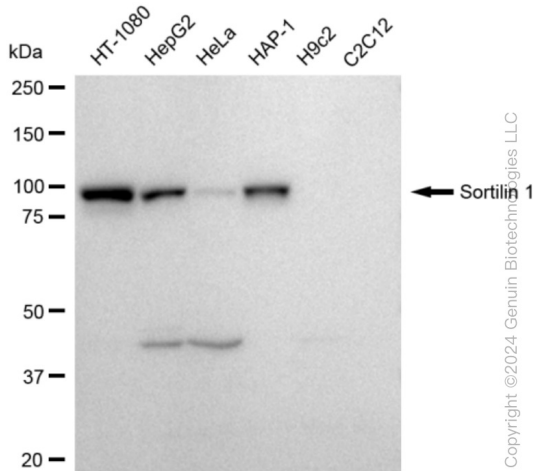
Product data:

Product Type:	Primary Antibodies
Clone Name:	23GB4170
Applications:	WB
Recommended Dilution:	Western Blotting (WB): 1:1,000-1:5,000
Reactivity:	Human
Host:	Rabbit
Isotype:	IgG
Clonality:	Monoclonal
Immunogen:	A synthesized peptide derived from human Sortilin
Formulation:	Supplied in PBS (pH 7.4) containing 50% glycerol, and 0.02% sodium azide.
Concentration:	Lot dependent
Purification:	Affinity Purified
Conjugation:	Unconjugated
Stability:	Store at -20 °C for one year.
Database Link:	Q99523
Synonyms:	100 KDa NT Receptor; Glycoprotein 95; GP95; Gp95; LDLCQ6; Neurotensin Receptor 3; NT3; NTR3; SORT1; Sortilin; Sortilin 1

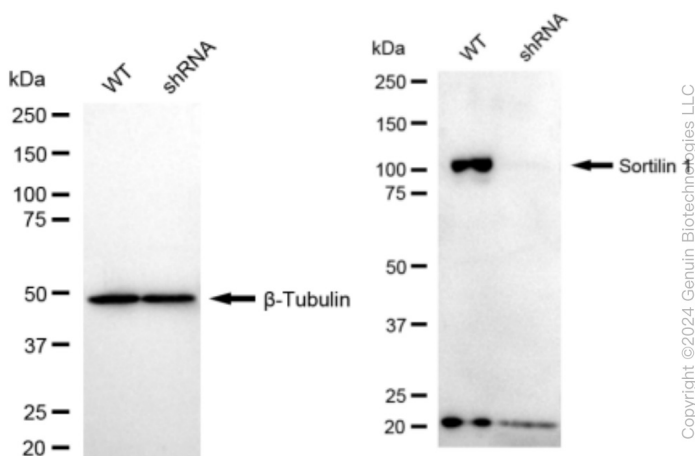


[View online »](#)

Product images:



Western blotting analysis using anti-Sortilin 1 antibody . Total cell lysates (30 µg) from various cell lines were loaded and separated by SDS-PAGE. The blot was incubated with anti-Sortilin 1 antibody and HRP-conjugated goat anti-rabbit secondary antibody respectively. Image was developed using anti-FeQ™ ECL Substrate Kit .



Western blotting analysis using anti-Sortilin 1 antibody . Sortilin 1 expression in wild type (WT) and Sortilin 1 shRNA knockdown (KD) HT-1080 cells with 30 µg of total cell lysates . β -Tubulin serves as a loading control. The blot was incubated with anti-Sortilin 1 antibody and HRP-conjugated goat anti-rabbit secondary antibody respectively. Image was developed using anti-FeQ™ ECL Substrate Kit .