

Product datasheet for **TA425220**

SMAD4 Rabbit Monoclonal Antibody [Clone ID: 23GB975]

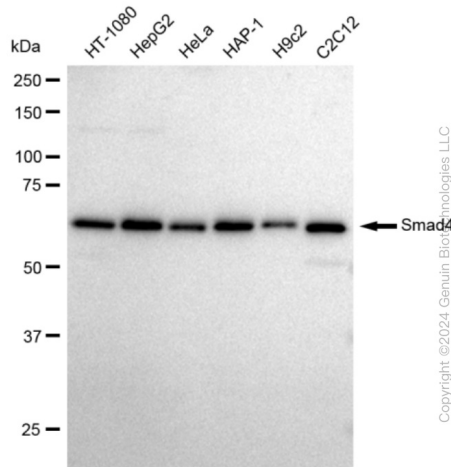
Product data:

Product Type:	Primary Antibodies
Clone Name:	23GB975
Applications:	FC, ICC, WB
Recommended Dilution:	Western Blotting (WB): 1:1,000-1:5,000, Flow Cytometry (FCM): 1:2,000, Immunocytochemistry (IC): 1:100-1:1,000
Reactivity:	Human, Mouse, Rat
Host:	Rabbit
Isotype:	IgG
Clonality:	Monoclonal
Immunogen:	A synthesized peptide derived from human Smad4
Formulation:	Supplied in PBS (pH 7.4) containing 50% glycerol, and 0.02% sodium azide.
Concentration:	Lot dependent
Purification:	Affinity Purified
Conjugation:	Unconjugated
Stability:	Store at -20 °C for one year.
Database Link:	Q13485
Synonyms:	Deleted In Pancreatic Carcinoma Locus 4; Deletion Target In Pancreatic Carcinoma 4; DPC4; HSMAD4; JIP; MAD, Mothers Against Decapentaplegic Homolog 4 (Drosophila); MADH4; MAD Homolog 4; Mothers Against Decapentaplegic, Drosophila, Homolog Of, 4; Mothers Against Decapentaplegic Homolog 4; Mothers Against DPP Homolog 4; MYHRS; SMAD, Mothers Against DPP Homolog 4; SMAD, Mothers Against DPP Homolog 4 (Drosophila); SMAD 4; Smad4

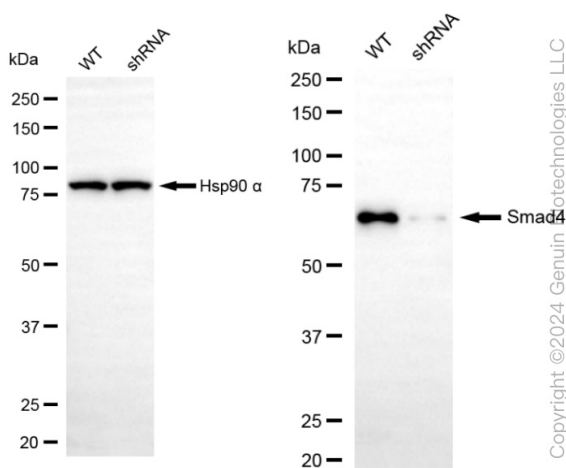


[View online »](#)

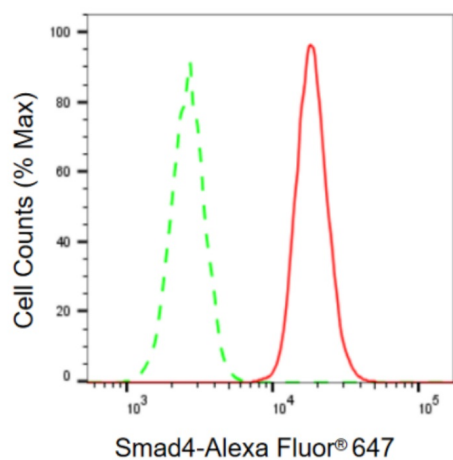
Product images:



Western blotting analysis using anti-Smad4 antibody . Total cell lysates (30 µg) from various cell lines were loaded and separated by SDS-PAGE. The blot was incubated with anti-Smad4 antibody and HRP-conjugated goat anti rabbit secondary antibody respectively. Image was developed using anti-FeQ™ ECL Substrate Kit .

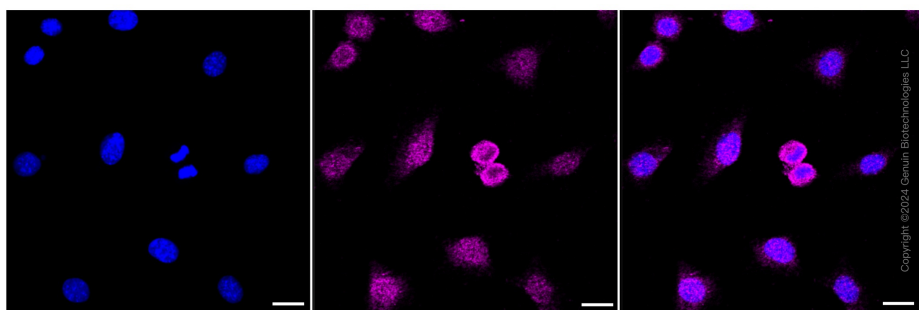


Western blotting analysis using anti-Smad4 antibody . Smad4 expression in wild type (WT) and Smad4 shRNA knockdown (KD) HT-1080 cells with 30 µg of total cell lysates . Hsp90 α serves as a loading control. The blot was incubated with anti-Smad4 antibody and HRP-conjugated goat anti rabbit secondary antibody respectively. Image was developed using anti-FeQ™ ECL Substrate Kit .



Copyright ©2024 Genuin Biotechnologies LLC

Flow cytometric analysis of Smad4 expression in C2C12 cells using anti-Smad4 antibody . Green, isotype control; red, Smad4.



Immunocytochemical staining of C2C12 cells with Smad4 antibody . Nuclei were stained blue with DAPI; Smad4 was stained magenta with Alexa Fluor® 647. Images were taken using anti-Leica stellaris 5. Protein abundance based on laser Intensity and smart gain: Medium. Scale bar: 20 μ m.