

Product datasheet for **TA425207**

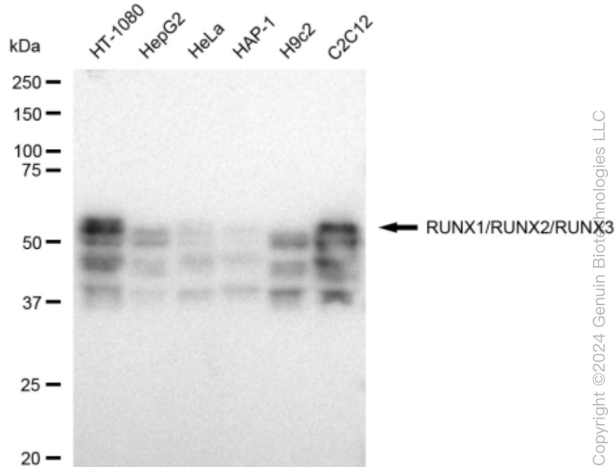
RUNX1 Rabbit Monoclonal Antibody [Clone ID: 23GB4800]

Product data:

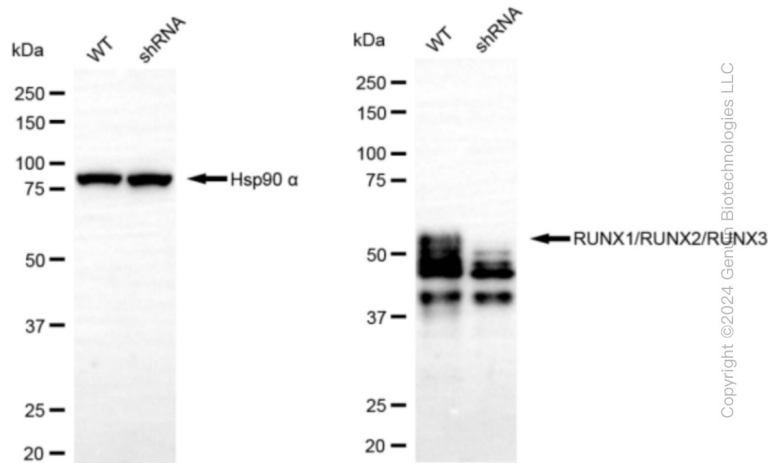
Product Type:	Primary Antibodies
Clone Name:	23GB4800
Applications:	FC, WB
Recommended Dilution:	Western Blotting (WB): 1:1,000-1:5,000, Flow Cytometry (FCM): 1:2,000
Reactivity:	Human, Mouse, Rat
Host:	Rabbit
Isotype:	IgG
Clonality:	Monoclonal
Immunogen:	A synthesized peptide derived from human RUNX1/RUNX2/RUNX3
Formulation:	Supplied in PBS (pH 7.4) containing 50% glycerol, and 0.02% sodium azide.
Concentration:	Lot dependent
Purification:	Affinity Purified
Conjugation:	Unconjugated
Stability:	Store at -20 °C for one year.
Database Link:	Q01196/Q13761/Q13950
Synonyms:	Acute Myeloid Leukemia 1; Acute Myeloid Leukemia 1 Protein; AML1; Aml1 Oncogene; AML1-ETO Fusion; AML1-ETO Fusion Protein; AML1-EVI-1; AML1-EVI-1 Fusion Protein; AMLCR1; CBF-Alpha-2; CBF2alpha; CBFA2; Core-Binding Factor, Runt Domain, Alpha Subunit; Core-Binding Factor Subunit Alpha-2; EVI-1; Mutant RUNX1; Oncogene AML-1; PEA2-Alpha B; PEBP2-Alpha B; PEBP2A2; PEBP2aB; PEBP2alpha; Polyomavirus Enhancer-Binding Protein 2 Alpha B Subunit; Runt-Related Transcription Factor 1; Runt Related Transcription Factor 1; RUNX1; RUNX Family Transcription Factor 1; SL3-3 Enhancer Factor 1 Alpha B Subunit; SL3/AKV Core-Binding Factor Alpha B Subunit


[View online »](#)

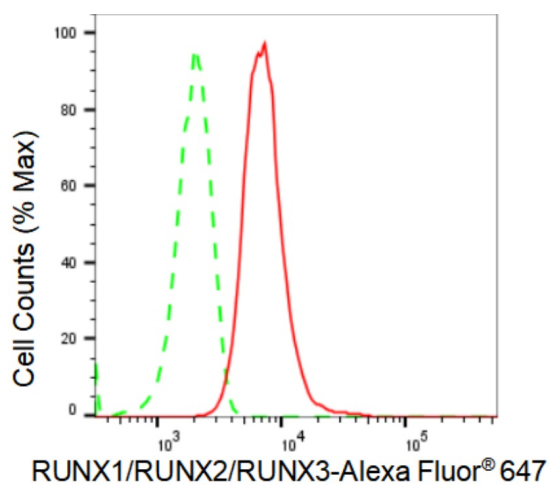
Product images:



Western blotting analysis using anti-RUNX1/RUNX2/RUNX3 antibody. Total cell lysates (30 µg) from various cell lines were loaded and separated by SDS-PAGE. The blot was incubated with anti-RUNX1/RUNX2/RUNX3 antibody and HRP-conjugated goat anti-rabbit secondary antibody respectively. Image was developed using anti-FeQ™ ECL Substrate Kit.



Western blotting analysis using anti-RUNX1/RUNX2/RUNX3 antibody. RUNX1/RUNX2/RUNX3 expression in wild type (WT) and RUNX1/RUNX2/RUNX3 shRNA knockdown (KD) HeLa cells with 30 µg of total cell lysates. Hsp90 α serves as a loading control. The blot was incubated with anti-RUNX1/RUNX2/RUNX3 antibody and HRP-conjugated goat anti-rabbit secondary antibody respectively. Image was developed using anti-FeQ™ ECL Substrate Kit.



Copyright ©2024 Genuin Biotechnologies LLC

Flow cytometric analysis of RUNX1/RUNX2/RUNX3 expression in HT-1080 cells using anti-RUNX1/RUNX2/RUNX3 antibody . Green, isotype control; red, RUNX1/RUNX2/RUNX3.