

Product datasheet for **TA425184**

RAF1 Rabbit Monoclonal Antibody [Clone ID: 23GB2700]

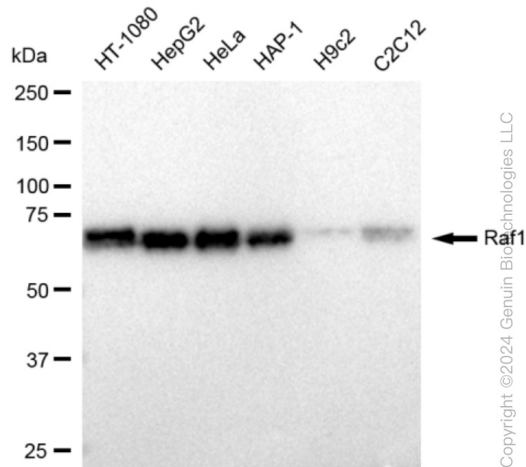
Product data:

Product Type:	Primary Antibodies
Clone Name:	23GB2700
Applications:	FC, ICC, WB
Recommended Dilution:	Western Blotting (WB): 1:1,000-1:5,000, Flow Cytometry (FCM): 1:2,000, Immunocytochemistry (IC): 1:100-1:1,000
Reactivity:	Human, Mouse, Rat
Host:	Rabbit
Isotype:	IgG
Clonality:	Monoclonal
Immunogen:	A synthesized peptide derived from human Raf1
Formulation:	Supplied in PBS (pH 7.4) containing 50% glycerol, and 0.02% sodium azide.
Concentration:	Lot dependent
Purification:	Affinity Purified
Conjugation:	Unconjugated
Stability:	Store at -20 °C for one year.
Database Link:	P04049
Synonyms:	C-RAF; C-Raf; C-Raf Proto-Oncogene, Serine/Threonine Kinase; CMD1NN; CRAF; CRaf; EC 2.7.11; EC 2.7.11.1; NS5; Oncogene RAF1; Proto-Oncogene C-RAF; RAF; RAF-1; Raf-1; Raf-1 Proto-Oncogene, Serine/Threonine Kinase; RAF1; RAF Proto-Oncogene Serine/Threonine-Protein Kinase; Raf Proto-Oncogene Serine/Threonine Protein Kinase; V-Raf-1 Murine Leukemia Viral Oncogene-Like Protein 1; V-Raf-1 Murine Leukemia Viral Oncogene Homolog 1

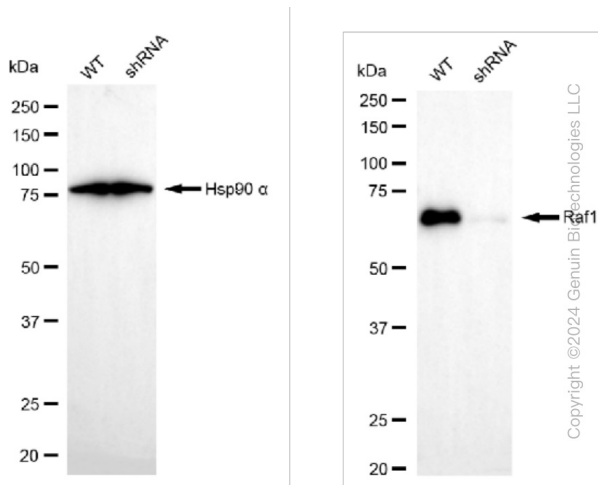


[View online »](#)

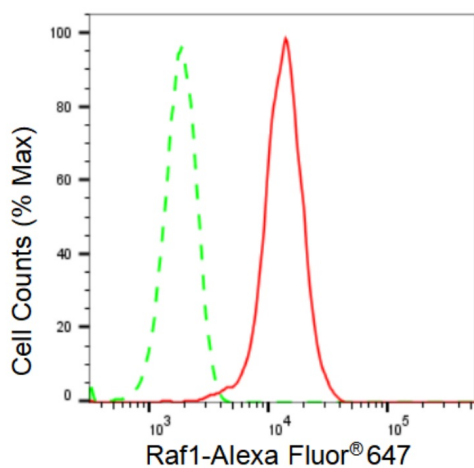
Product images:



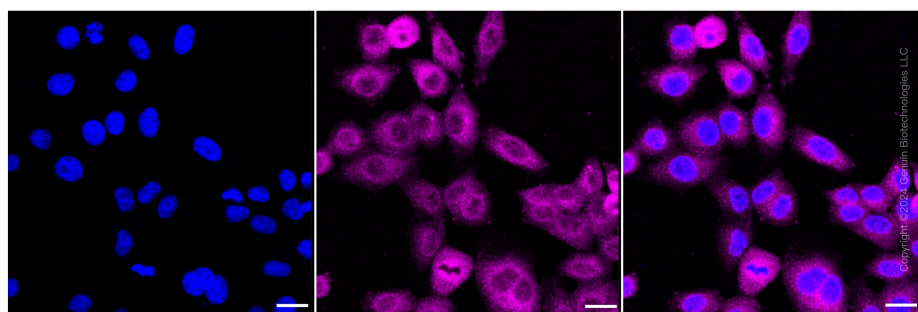
Western blotting analysis using anti-Raf1 antibody . Total cell lysates (30 µg) from various cell lines were loaded and separated by SDS-PAGE. The blot was incubated with anti-Raf1 antibody and HRP-conjugated goat anti-rabbit secondary antibody respectively. Image was developed using anti-FeQ™ ECL Substrate Kit .



Western blotting analysis using anti-Raf1 antibody . Raf1 expression in wild type (WT) and Raf1 shRNA knockdown (KD) HeLa cells with 30 µg of total cell lysates . Hsp90 α serves as a loading control. The blot was incubated with anti-Raf1 antibody and HRP-conjugated goat anti-rabbit secondary antibody respectively. Image was developed using anti-FeQ™ ECL Substrate Kit .



Flow cytometric analysis of Raf1 expression in HepG2 cells using anti-Raf1 antibody . Green, isotype control; red, Raf1.



Immunocytochemical staining of HepG2 cells with Raf1 antibody . Nuclei were stained blue with DAPI; Raf1 was stained magenta with Alexa Fluor® 647. Images were taken using anti-Leica stellaris 5. Protein abundance based on laser Intensity and smart gain: Medium. Scale bar: 20 μ m.