

Product datasheet for TA425152

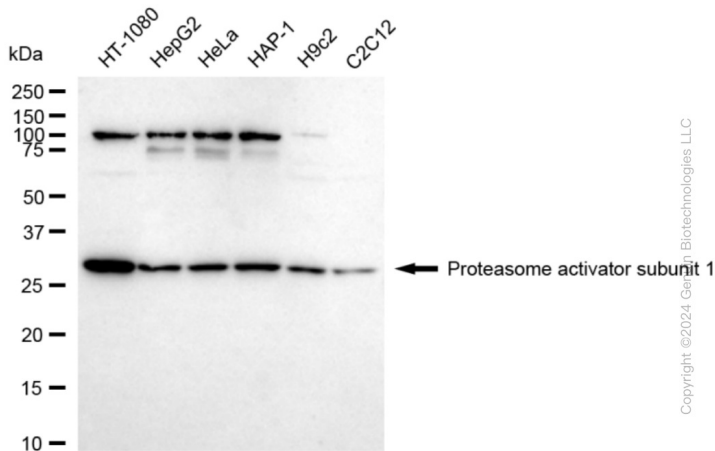
PSME1 Rabbit Monoclonal Antibody [Clone ID: 24GB1505]

Product data:

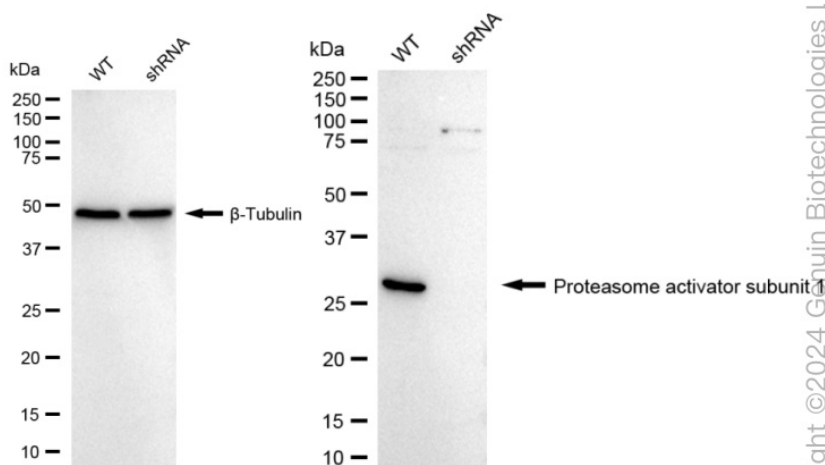
Product Type:	Primary Antibodies
Clone Name:	24GB1505
Applications:	FC, WB
Recommended Dilution:	Western Blotting (WB): 1:1,000-1:5,000, Flow Cytometry (FCM): 1:2,000
Reactivity:	Human, Mouse, Rat
Host:	Rabbit
Isotype:	IgG
Clonality:	Monoclonal
Immunogen:	A synthesized peptide derived from human PSME1
Formulation:	Supplied in PBS (pH 7.4) containing 50% glycerol, and 0.02% sodium azide.
Concentration:	Lot dependent
Purification:	Affinity Purified
Conjugation:	Unconjugated
Stability:	Store at -20 °C for one year.
Database Link:	Q06323
Synonyms:	11S Regulator Complex Subunit Alpha; 29-KD MCP Activator Subunit; Activator Of Multicatalytic Protease Subunit 1; Epididymis Secretory Sperm Binding Protein Li 129m; HEL-S-129m; IFI5111; IGUP I-5111; Interferon-Gamma-Inducible Protein 5111; Interferon-Gamma IEF SSP 5111; Interferon Gamma Up-Regulated I-5111 Protein; PA28A; PA28a; PA28alpha; Proteasome (Prosome, Macropain) Activator Subunit 1 (PA28 Alpha); Proteasome Activator 28 Subunit Alpha; Proteasome Activator Complex Subunit 1; Proteasome Activator Subunit 1; REG-Alpha; REGalpha


[View online »](#)

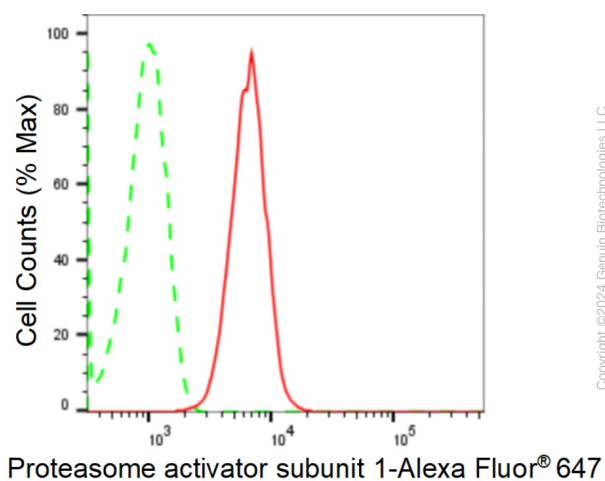
Product images:



Copyright ©2024 GenScript Biotechnologies LLC



Copyright ©2024 GenScript Biotechnologies LLC



Flow cytometric analysis of Proteasome activator subunit 1 expression in HT-1080 cells using anti-Proteasome activator subunit 1 antibody . Green, isotype control; red, Proteasome activator subunit 1.