

Product datasheet for **TA425145**

PHB Rabbit Monoclonal Antibody [Clone ID: 24GB6045]

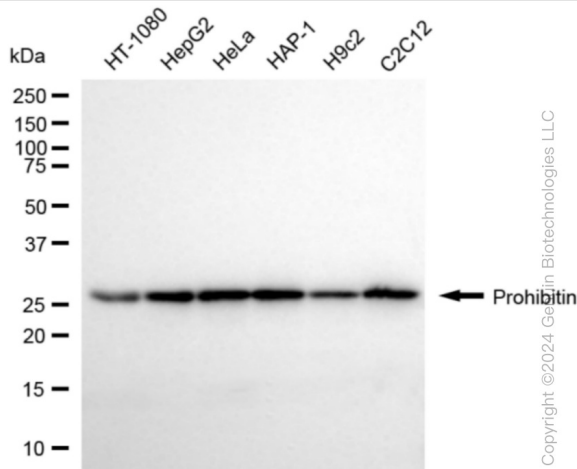
Product data:

Product Type:	Primary Antibodies
Clone Name:	24GB6045
Applications:	FC, ICC, WB
Recommended Dilution:	Western Blotting (WB): 1:1,000-1:5,000, Flow Cytometry (FCM): 1:2,000, Immunocytochemistry (IC): 1:100-1:1,000
Reactivity:	Human, Mouse, Rat
Host:	Rabbit
Isotype:	IgG
Clonality:	Monoclonal
Immunogen:	A synthesized peptide derived from human Prohibitin
Formulation:	Supplied in PBS (pH 7.4) containing 50% glycerol, and 0.02% sodium azide.
Concentration:	Lot dependent
Purification:	Affinity Purified
Conjugation:	Unconjugated
Stability:	Store at -20 °C for one year.
Database Link:	P35232
Synonyms:	Epididymis Luminal Protein 215; Epididymis Secretory Sperm Binding Protein Li 54e; HEL-215; HEL-S-54e; PHB; Prohibitin; Prohibitin 1

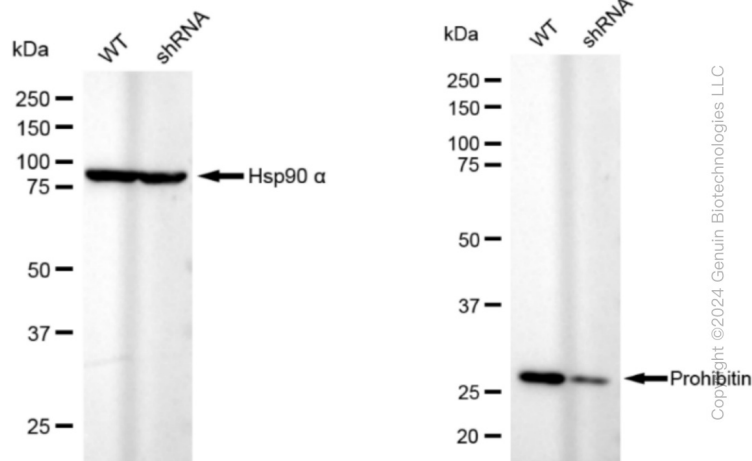


[View online »](#)

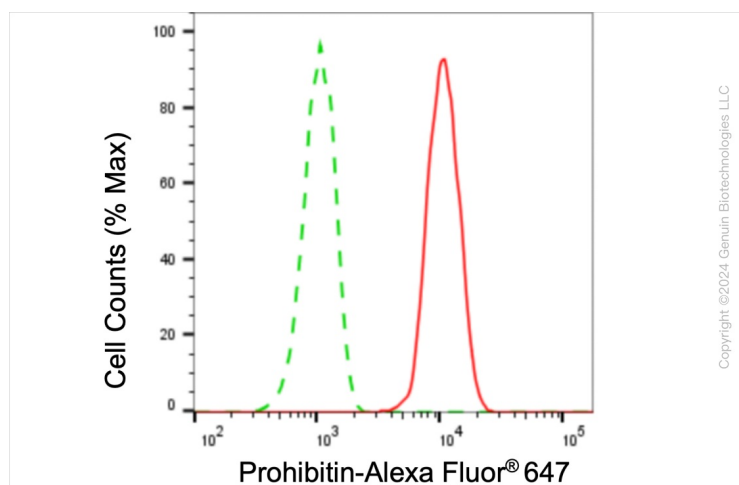
Product images:



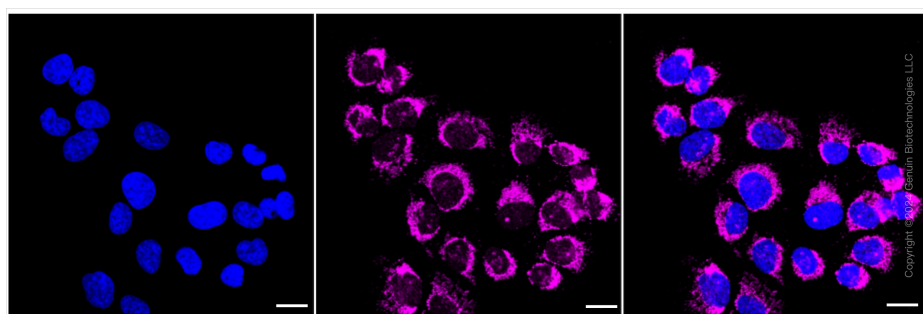
Western blotting analysis using anti-prohibitin antibody . Total cell lysates (30 µg) from various cell lines were loaded and separated by SDS-PAGE. The blot was incubated with anti-prohibitin antibody and HRP-conjugated goat anti-rabbit secondary antibody respectively. Image was developed using anti-FeQ™ ECL Substrate Kit .



Western blotting analysis using anti-prohibitin antibody . Prohibitin expression in wild type (WT) and prohibitin (PHB1) shRNA knockdown (KD) HeLa cells with 20 µg of total cell lysates. Hsp90 α serves as a loading control. The blot was incubated with anti-prohibitin antibody and HRP-conjugated goat anti-rabbit secondary antibody respectively. Image was developed using anti-NaQ™ ECL Substrate Kit .



Flow cytometric analysis of prohibitin expression in HT-1080 cells using anti-prohibitin antibody . Green, isotype control; red, prohibitin.



Immunocytochemical staining of HT-1080 cells with prohibitin antibody . Nuclei were stained blue with DAPI; Prohibitin was stained magenta with Alexa Fluor® 647. Images were taken using anti-Leica stellaris 5. Protein abundance based on laser Intensity and smart gain: Medium. Scale bar: 20 µm.