

Product datasheet for **TA425140**

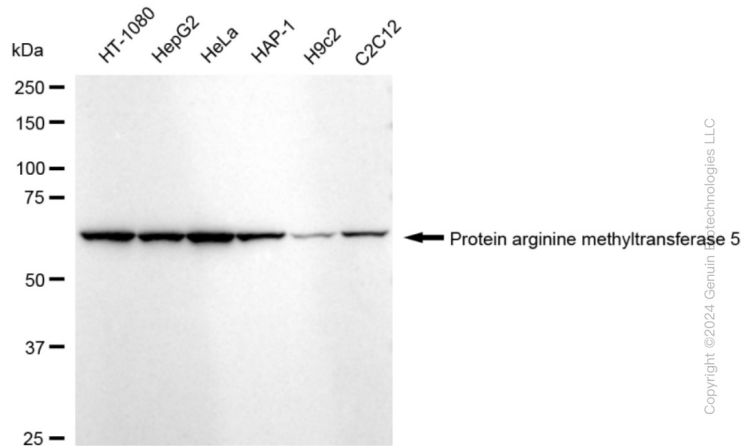
PRMT5 Rabbit Monoclonal Antibody [Clone ID: 24GB845]

Product data:

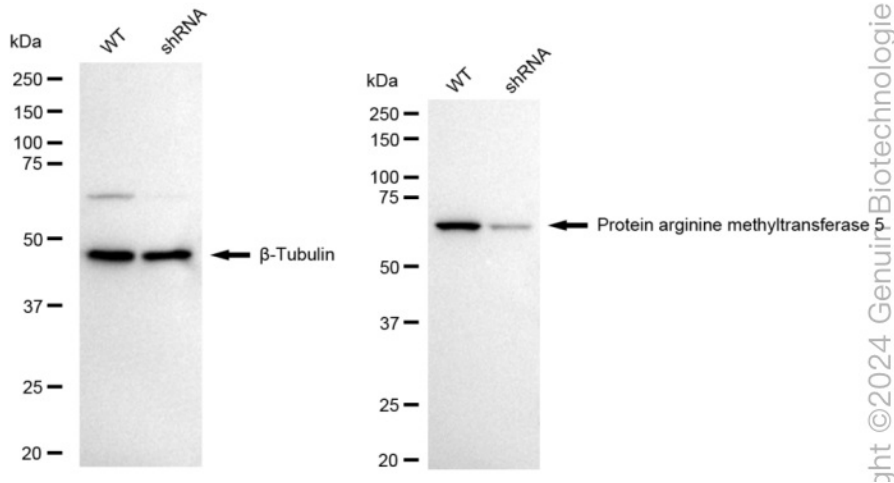
Product Type:	Primary Antibodies
Clone Name:	24GB845
Applications:	FC, ICC, WB
Recommended Dilution:	Western Blotting (WB): 1:2,000-1:10,000, Flow Cytometry (FCM): 1:2,000, Immunocytochemistry (IC): 1:100-1:1,000
Reactivity:	Human, Mouse, Rat
Host:	Rabbit
Isotype:	IgG
Clonality:	Monoclonal
Immunogen:	A synthesized peptide derived from human PRMT5
Formulation:	Supplied in PBS (pH 7.4) containing 50% glycerol, and 0.02% sodium azide.
Concentration:	Lot dependent
Purification:	Affinity Purified
Conjugation:	Unconjugated
Stability:	Store at -20 °C for one year.
Database Link:	Q14744
Synonyms:	72 KDa ICln-Binding Protein; EC 2.1.1.320; Histone-Arginine N-Methyltransferase PRMT5; HMT1 HnRNP Methyltransferase-Like 5; HRMT1L5; HSL7; IBP72; Jak-Binding Protein 1; JBP1; Protein Arginine Methyltransferase 5; Protein Arginine N-Methyltransferase 5; Shk1 Kinase-Binding Protein 1 Homolog; SKB1; Skb1 (S. Pombe) Homolog; SKB1 Homolog; SKB1 Homolog (S. Pombe); SKB1Hs

[View online »](#)

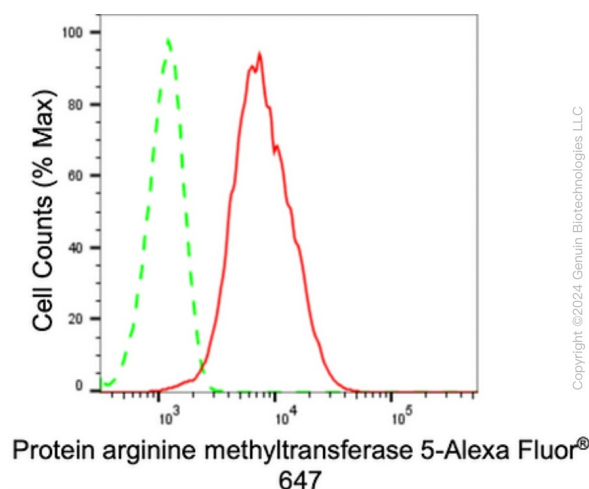
Product images:



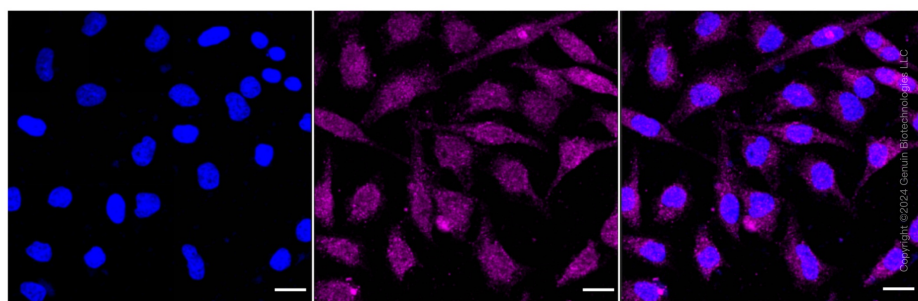
Western blotting analysis using anti-Protein arginine methyltransferase 5 antibody . Total cell lysates (30 µg) from various cell lines were loaded and separated by SDS-PAGE. The blot was incubated with anti-Protein arginine methyltransferase 5 antibody and HRP-conjugated goat anti-rabbit secondary antibody respectively. Image was developed using anti-FeQ™ ECL Substrate Kit .



Western blotting analysis using anti-protein arginine methyltransferase 5 antibody . Protein arginine methyltransferase 5 expression in wild-type (WT) and protein arginine methyltransferase 5 (PRMT5) shRNA knockdown (KD) HeLa cells with 20 µg of total cell lysates . β-Tubulin serves as a loading control. The blot was incubated with anti-protein arginine methyltransferase 5 antibody and HRP-conjugated goat anti-rabbit secondary antibody respectively. Image was developed using anti-NaQ™ ECL Substrate Kit .



Flow cytometric analysis of Protein arginine methyltransferase 5 expression in HeLa cells using anti-Protein arginine methyltransferase 5 antibody . Green, isotype control; red, Protein arginine methyltransferase 5.



Immunocytochemical staining of HeLa cells with anti-Protein arginine methyltransferase 5 antibody . Nuclei were stained blue with DAPI; Protein arginine methyltransferase 5 was stained magenta with Alexa Fluor® 647. Images were taken using anti-Leica stellaris 5. Protein abundance based on laser Intensity and smart gain: Medium. Scale bar: 20 µm.