

Product datasheet for **TA425083**

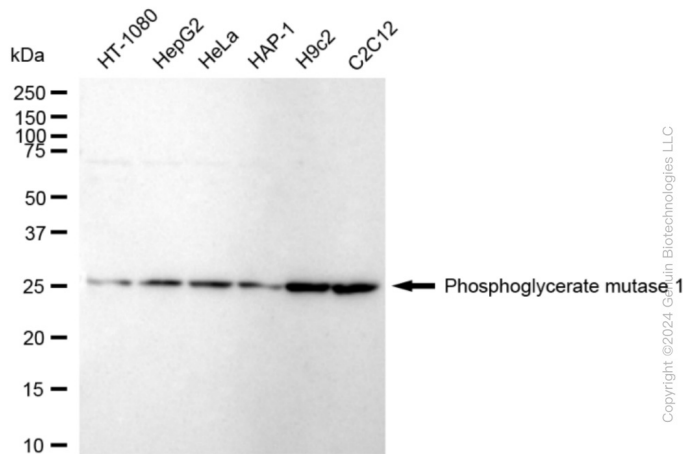
PGAM1 Rabbit Monoclonal Antibody [Clone ID: 24GB1635]

Product data:

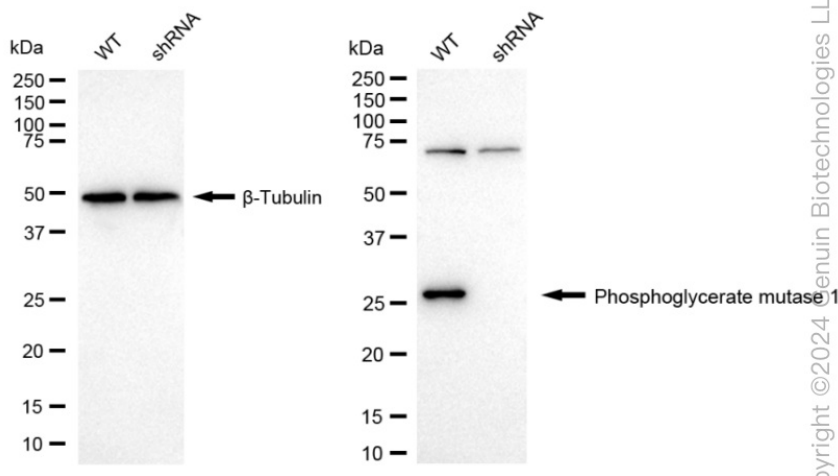
Product Type:	Primary Antibodies
Clone Name:	24GB1635
Applications:	WB
Recommended Dilution:	Western Blotting (WB): 1:1,000-1:5,000
Reactivity:	Human, Mouse, Rat
Host:	Rabbit
Isotype:	IgG
Clonality:	Monoclonal
Immunogen:	A synthesized peptide derived from human PGAM1
Formulation:	Supplied in PBS (pH 7.4) containing 50% glycerol, and 0.02% sodium azide.
Concentration:	Lot dependent
Purification:	Affinity Purified
Conjugation:	Unconjugated
Stability:	Store at -20 °C for one year.
Database Link:	P18669
Synonyms:	BPG-Dependent PGAM 1; EC 5.4.2.1; EC 5.4.2.4; EC 5.4.2.11; Epididymis Secretory Protein Li 35; HEL-S-35; PGAM-B; PGAMA; Phosphoglycerate Mutase 1; Phosphoglycerate Mutase 1 (Brain); Phosphoglycerate Mutase A, Nonmuscle Form; Phosphoglycerate Mutase Isozyme B

[View online »](#)

Product images:



Western blotting analysis using anti-Phosphoglycerate mutase 1 antibody. Total cell lysates (30 µg) from various cell lines were loaded and separated by SDS-PAGE. The blot was incubated with anti-Phosphoglycerate mutase 1 antibody and HRP-conjugated goat anti-rabbit secondary antibody respectively. Image was developed using anti-FeQ™ ECL Substrate Kit.



Western blotting analysis using anti-Phosphoglycerate mutase 1 antibody. Phosphoglycerate mutase 1 expression in wild type (WT) and Phosphoglycerate mutase 1 shRNA knockdown (KD) HeLa cells with 20 µg of total cell lysates. β-Tubulin serves as a loading control. The blot was incubated with anti-Phosphoglycerate mutase 1 antibody and HRP-conjugated goat anti-rabbit secondary antibody respectively. Image was developed using anti-NaQ™ ECL Substrate Kit.