

## Product datasheet for **TA425072**

### **ARRB1 Rabbit Monoclonal Antibody [Clone ID: 23GB3845]**

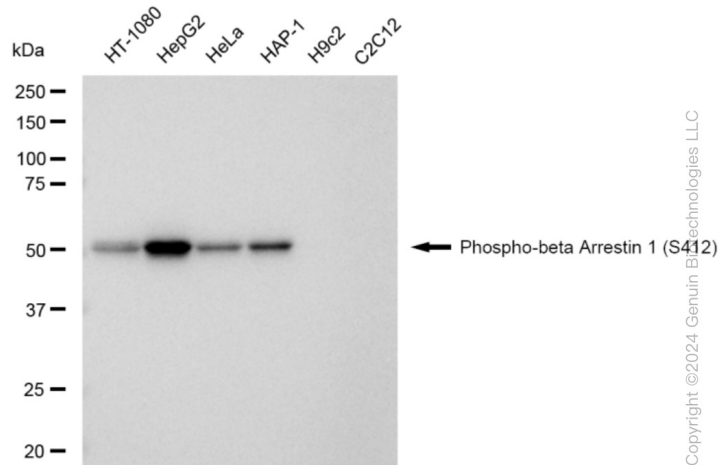
#### **Product data:**

Product Type:	Primary Antibodies
Clone Name:	23GB3845
Applications:	FC, ICC, WB
Recommended Dilution:	Western Blotting (WB): 1:1,000-1:5,000, Flow Cytometry (FCM): 1:2,000, Immunocytochemistry (IC): 1:100-1:1,000
Reactivity:	Human
Host:	Rabbit
Isotype:	IgG
Clonality:	Monoclonal
Immunogen:	A synthesized peptide derived from human Phospho-beta Arrestin 1 (S412)
Formulation:	Supplied in PBS (pH 7.4) containing 50% glycerol, and 0.02% sodium azide.
Concentration:	Lot dependent
Purification:	Affinity Purified
Conjugation:	Unconjugated
Stability:	Store at -20 °C for one year.
Database Link:	<a href="#">P49407</a>
Synonyms:	ARB1; ARR1; ARRB1; Arrestin, Beta 1; Arrestin 2; Arrestin Beta-1; Arrestin Beta 1; Beta-Arrestin-1; Non-Visual Arrestin-2

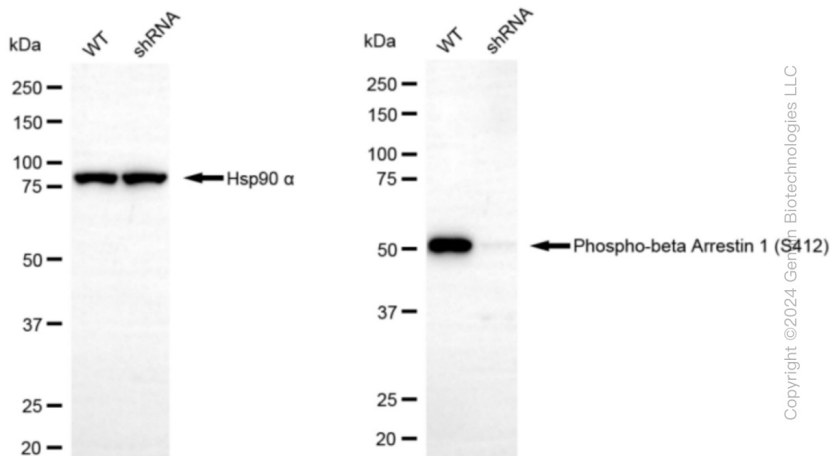


[View online »](#)

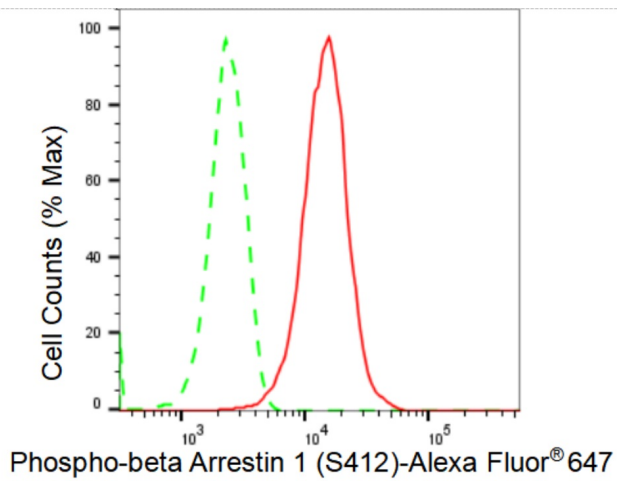
## Product images:



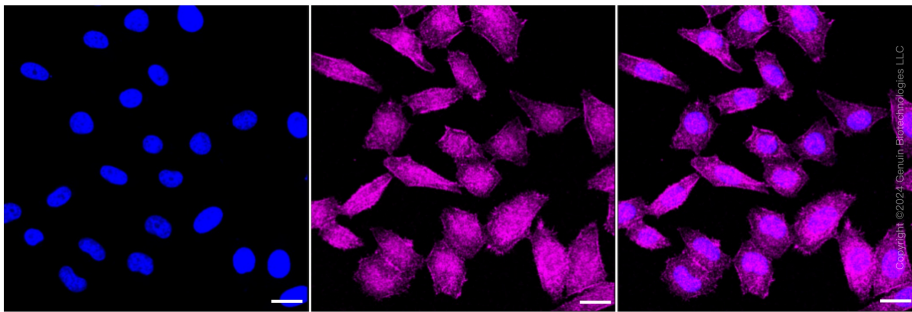
Western blotting analysis using anti-Phospho-beta Arrestin 1 (S412) antibody. Total cell lysates (30 µg) from various cell lines were loaded and separated by SDS-PAGE. The blot was incubated with anti-Phospho-beta Arrestin 1 (S412) antibody and HRP-conjugated goat anti-rabbit secondary antibody respectively. Image was developed using anti-FeQ™ ECL Substrate Kit.



Western blotting analysis using anti-Phospho-beta Arrestin 1 (S412) antibody. Phospho-beta Arrestin 1 (S412) expression in wild type (WT) and Phospho-beta Arrestin 1 (S412) shRNA knockdown (KD) HeLa cells with 30 µg of total cell lysates. Hsp90 α serves as a loading control. The blot was incubated with anti-Phospho-beta Arrestin 1 (S412) antibody and HRP-conjugated goat anti-rabbit secondary antibody respectively. Image was developed using anti-FeQ™ ECL Substrate Kit.



Flow cytometric analysis of Phospho-beta Arrestin 1 (S412) expression in HepG2 cells using anti-Phospho-beta Arrestin 1 (S412) antibody . Green, isotype control; red, Phospho-beta Arrestin 1 (S412).



Immunocytochemical staining of HepG2 cells with Phospho-beta Arrestin 1 (S412) antibody . Nuclei were stained blue with DAPI; Phospho-beta Arrestin 1 (S412) was stained magenta with Alexa Fluor® 647. Images were taken using anti-Leica stellaris 5. Protein abundance based on laser Intensity and smart gain: Medium. Scale bar: 20  $\mu$ m.