

Product datasheet for **TA425064**

PERP Rabbit Monoclonal Antibody [Clone ID: 24GB1630]

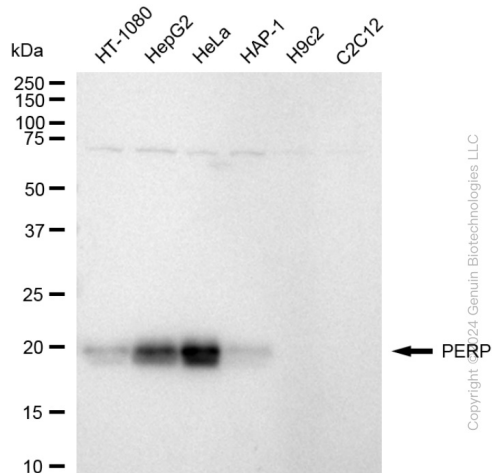
Product data:

Product Type:	Primary Antibodies
Clone Name:	24GB1630
Applications:	FC, WB
Recommended Dilution:	Western Blotting (WB): 1:1,000-1:5,000, Flow Cytometry (FCM): 1:2,000
Reactivity:	Human
Host:	Rabbit
Isotype:	IgG
Clonality:	Monoclonal
Immunogen:	A synthesized peptide derived from human PERP
Formulation:	Supplied in PBS (pH 7.4) containing 50% glycerol, and 0.02% sodium azide.
Concentration:	Lot dependent
Purification:	Affinity Purified
Conjugation:	Unconjugated
Stability:	Store at -20 °C for one year.
Database Link:	Q96FX8
Synonyms:	1110017A08Rik; DJ496H19.1; EKVP7; KCP-1; KCP1; Keratinocyte-Associated Protein 1; Keratinocyte Associated Protein 1; Keratinocytes Associated Protein 1; KRTCAP1; OLMS2; P53 Apoptosis Effector Related To PMP-22; P53 Apoptosis Effector Related To PMP22; P53-Induced Protein PIGPC1; PERP, TP53 Apoptosis Effector; PIGPC1; THW; Transmembrane Protein THW

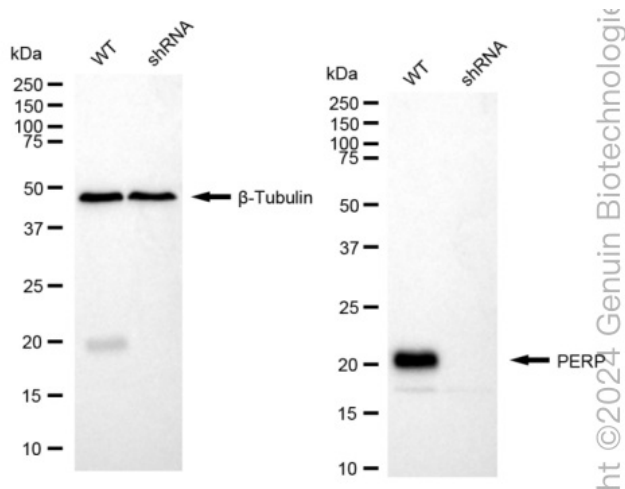


[View online »](#)

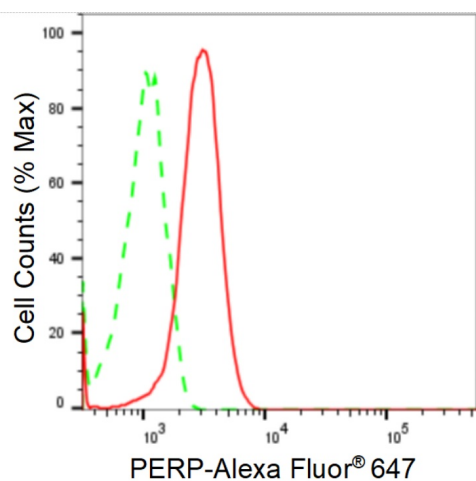
Product images:



Western blotting analysis using anti-PERP antibody . Total cell lysates (30 µg) from various cell lines were loaded and separated by SDS-PAGE. The blot was incubated with anti-PERP antibody and HRP-conjugated goat anti-rabbit secondary antibody respectively. Image was developed using anti-FeQ™ ECL Substrate Kit .



Western blotting analysis using anti-PERP antibody . PERP expression in wild type (WT) and PERP shRNA knockdown (KD) HeLa cells with 20 µg of total cell lysates . β-Tubulin serves as a loading control. The blot was incubated with anti-PERP antibody and HRP-conjugated goat anti-rabbit secondary antibody respectively. Image was developed using anti-NaQ™ ECL Substrate Kit .



Copyright ©2024 Genuin Biotechnologies LLC

Flow cytometric analysis of PERP expression in Hela cells using anti-PERP antibody . Green, isotype control; red, PERP.