

## Product datasheet for **TA425053**

### PELP1 Rabbit Monoclonal Antibody [Clone ID: 24GB1145]

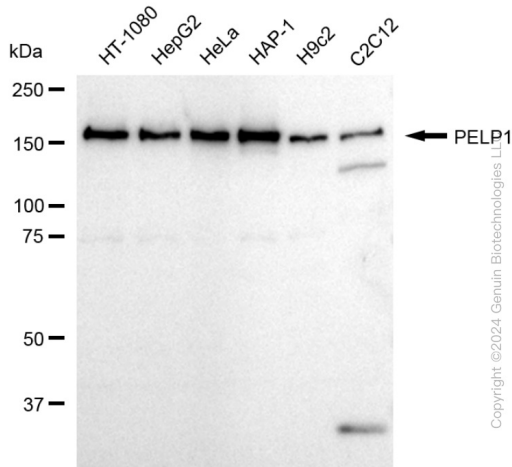
#### Product data:

Product Type:	Primary Antibodies
Clone Name:	24GB1145
Applications:	FC, WB
Recommended Dilution:	Western Blotting (WB): 1:1,000-1:5,000, Flow Cytometry (FCM): 1:2,000
Reactivity:	Human, Mouse, Rat
Host:	Rabbit
Isotype:	IgG
Clonality:	Monoclonal
Immunogen:	A synthesized peptide derived from human PELP1
Formulation:	Supplied in PBS (pH 7.4) containing 50% glycerol, and 0.02% sodium azide.
Concentration:	Lot dependent
Purification:	Affinity Purified
Conjugation:	Unconjugated
Stability:	Store at -20 °C for one year.
Database Link:	<a href="#">Q8IZL8</a>
Synonyms:	HMX3; MNAR; Modulator Of Non-Genomic Activity Of Estrogen Receptor; P160; Proline, Glutamate And Leucine Rich Protein 1; Proline, Glutamic Acid And Leucine Rich Protein 1; Proline-, Glutamic Acid- And Leucine-Rich Protein 1; Proline And Glutamic Acid Rich Nuclear Protein; Transcription Factor HMX3

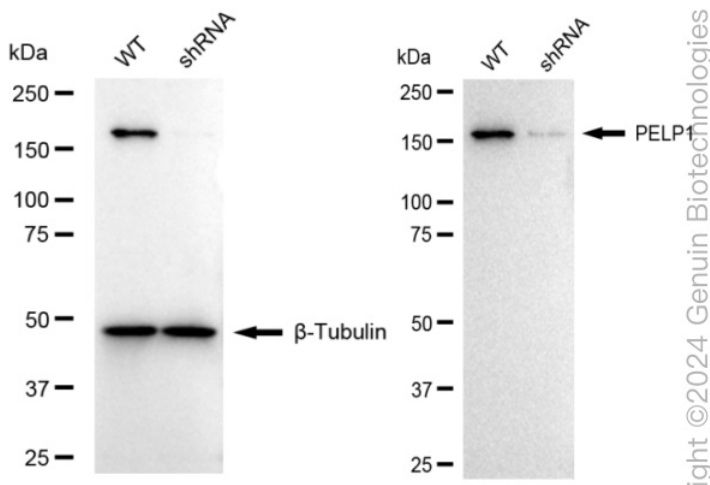


[View online »](#)

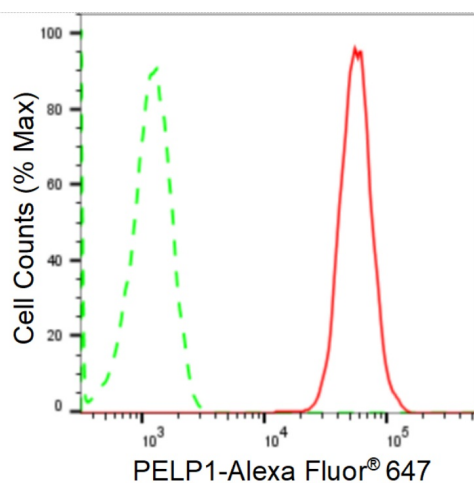
## Product images:



Western blotting analysis using anti-PELP1 antibody . Total cell lysates (30 µg) from various cell lines were loaded and separated by SDS-PAGE. The blot was incubated with anti-PELP1 antibody and HRP-conjugated goat anti-rabbit secondary antibody respectively. Image was developed using anti-FeQ™ ECL Substrate Kit .



Western blotting analysis using anti-PELP1 antibody . PELP1 expression in wild type (WT) and PELP1 shRNA knockdown (KD) HeLa cells with 20 µg of total cell lysates . β-Tubulin serves as a loading control. The blot was incubated with anti-PELP1 antibody and HRP-conjugated goat anti-rabbit secondary antibody respectively. Image was developed using anti-NaQ™ ECL Substrate Kit .



Copyright ©2024 Genuin Biotechnologies LLC

Flow cytometric analysis of PELP1 expression in HAP-1 cells using anti-PELP1 antibody . Green, isotype control; red, PELP1.