

Product datasheet for **TA425050**

PDPK1 Rabbit Monoclonal Antibody [Clone ID: 24GB5425]

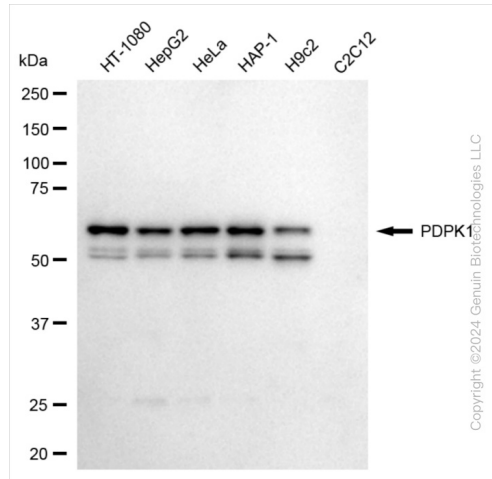
Product data:

Product Type:	Primary Antibodies
Clone Name:	24GB5425
Applications:	FC, ICC, WB
Recommended Dilution:	Western Blotting (WB): 1:1,000-1:5,000, Flow Cytometry (FCM): 1:2,000, Immunocytochemistry (IC): 1:100-1:1,000
Reactivity:	Human, Rat
Host:	Rabbit
Isotype:	IgG
Clonality:	Monoclonal
Immunogen:	A synthesized peptide derived from human PDPK1
Formulation:	Supplied in PBS (pH 7.4) containing 50% glycerol, and 0.02% sodium azide.
Concentration:	Lot dependent
Purification:	Affinity Purified
Conjugation:	Unconjugated
Stability:	Store at -20 °C for one year.
Database Link:	Q15530
Synonyms:	3-Phosphoinositide-Dependent Protein Kinase 1; 3-Phosphoinositide-Dependent Protein Kinase 2 Pseudogene; 3-Phosphoinositide Dependent Protein Kinase 1; EC 2.7.11; EC 2.7.11.1; HPDK1; PDK1; PDPK1; PDPK2; PDPK2P; PkB Kinase; PkB Kinase Like Gene 1; PRO0461; Putative 3-Phosphoinositide-Dependent Protein Kinase

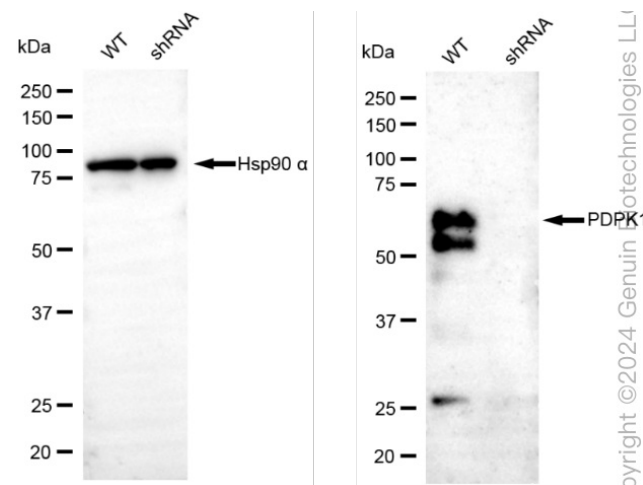


[View online »](#)

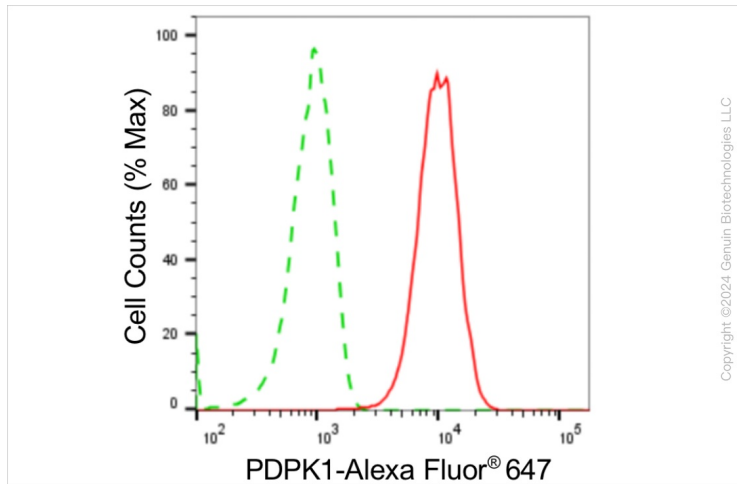
Product images:



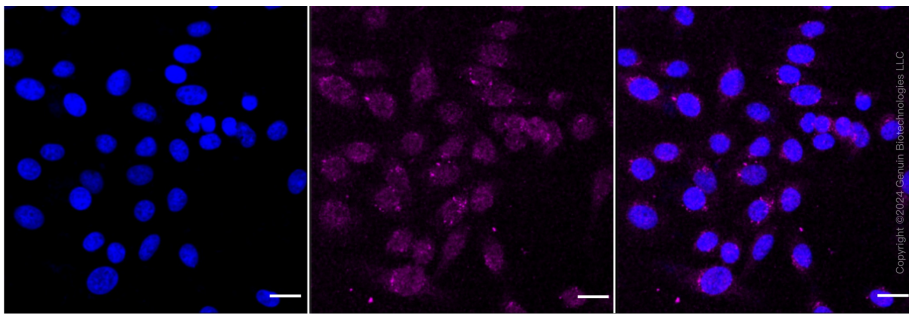
Western blotting analysis using anti-PDPK1 antibody . Total cell lysates (30 µg) from various cell lines were loaded and separated by SDS-PAGE. The blot was incubated with anti-PDPK1 antibody and HRP-conjugated goat anti-rabbit secondary antibody respectively. Image was developed using anti-FeQ™ ECL Substrate Kit . PDPK1, 3-phosphoinositide dependent protein kinase 1.



Western blotting analysis using anti-PDPK1 antibody . PDPK1 expression in wild type (WT) and PDPK1 shRNA knockdown (KD) HeLa cells with 20 µg of total cell lysates. Hsp90 α serves as a loading control. The blot was incubated with anti-PDPK1 antibody and HRP-conjugated goat anti-rabbit secondary antibody respectively. Image was developed using anti-NaQ™ ECL Substrate Kit .



Flow cytometric analysis of PDPK1 expression in HepG2 cells using anti-PDPK1 antibody . Green, isotype control; red, PDPK1.



Immunocytochemical staining of HepG2 cells with anti-PDPK1 antibody . Nuclei were stained blue with DAPI; PDPK1 was stained magenta with Alexa Fluor® 647. Images were taken using anti-Leica stellaris 5. Protein abundance based on laser Intensity and smart gain: Medium. Scale bar: 20 µm.