

Product datasheet for **TA425043**

PEBP1 Rabbit Monoclonal Antibody [Clone ID: 24GB860]

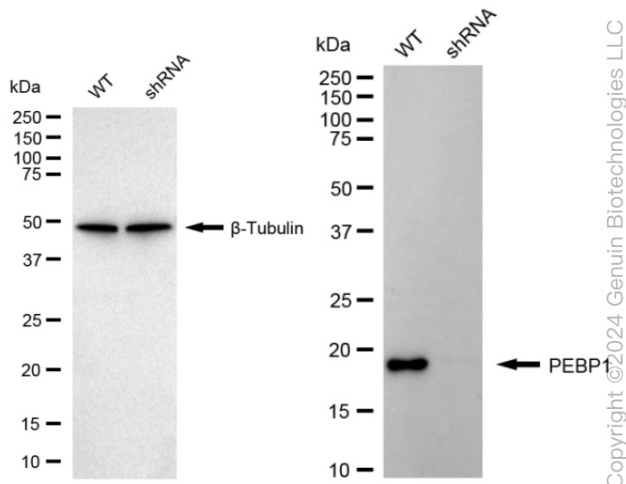
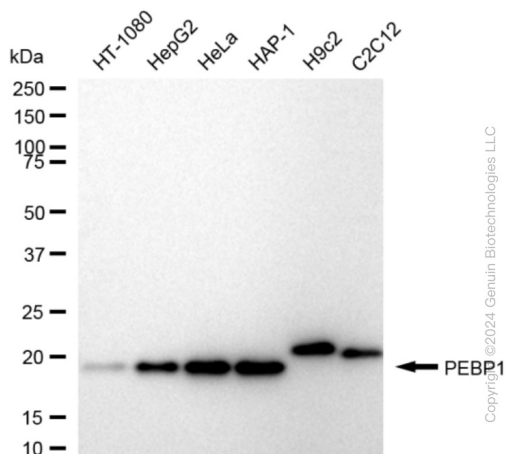
Product data:

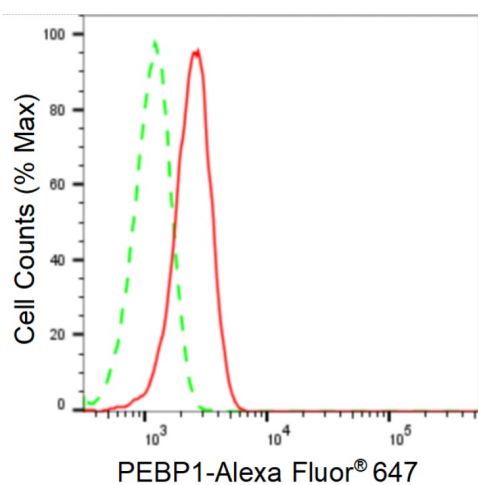
Product Type:	Primary Antibodies
Clone Name:	24GB860
Applications:	FC, ICC, WB
Recommended Dilution:	Western Blotting (WB): 1:1,000-1:5,000, Flow Cytometry (FCM): 1:2,000, Immunocytochemistry (IC): 1:100-1:1,000
Reactivity:	Human, Mouse, Rat
Host:	Rabbit
Isotype:	IgG
Clonality:	Monoclonal
Immunogen:	A synthesized peptide derived from human PEBP1
Formulation:	Supplied in PBS (pH 7.4) containing 50% glycerol, and 0.02% sodium azide.
Concentration:	Lot dependent
Purification:	Affinity Purified
Conjugation:	Unconjugated
Stability:	Store at -20 °C for one year.
Database Link:	P30086
Synonyms:	Epididymis Luminal Protein 210; Epididymis Secretory Protein Li 34; Epididymis Secretory Protein Li 96; HCNP; HCNPPp; HEL-210; HEL-S-34; HEL-S-96; Hippocampal Cholinergic Neurostimulating Peptide; Neuropolypeptide H3; PBP; PEBP; PEBP-1; Phosphatidylethanolamine-Binding Protein 1; Phosphatidylethanolamine Binding Protein 1; Prostatic-Binding Protein; Prostatic Binding Protein; Raf Kinase Inhibitor Protein; Raf Kinase Inhibitory Protein; RKIP



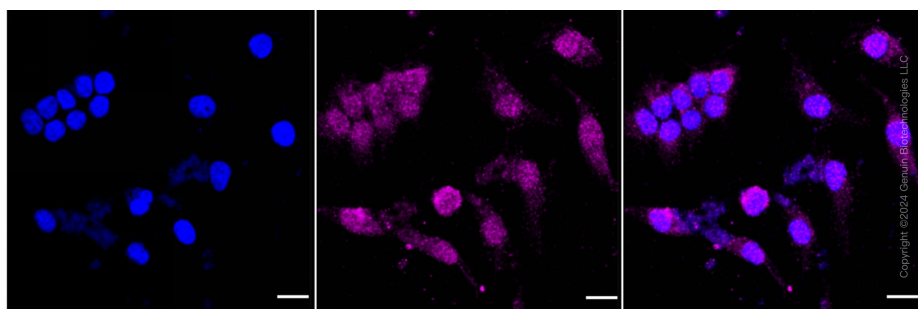
[View online »](#)

Product images:





Flow cytometric analysis of PEBP1 expression in HeLa cells using anti-PEBP1 antibody . Green, isotype control; red, PEBP1.



Immunocytochemical staining of HeLa cells with anti-PEBP1 antibody . Nuclei were stained blue with DAPI; PEBP1 was stained magenta with Alexa Fluor® 647. Images were taken using anti-Leica stellaris 5. Protein abundance based on laser Intensity and smart gain: Low. Scale bar: 20 μ m.