

Product datasheet for **TA425037**

PAK2 Rabbit Monoclonal Antibody [Clone ID: 23GB2595]

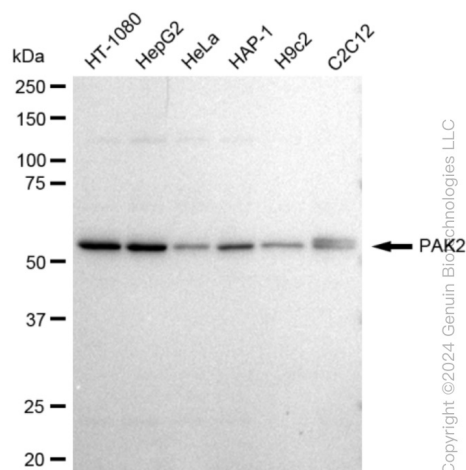
Product data:

Product Type:	Primary Antibodies
Clone Name:	23GB2595
Applications:	FC, ICC, WB
Recommended Dilution:	Western Blotting (WB): 1:1,000-1:5,000, Flow Cytometry (FCM): 1:2,000, Immunocytochemistry (IC): 1:100-1:1,000
Reactivity:	Human, Mouse, Rat
Host:	Rabbit
Isotype:	IgG
Clonality:	Monoclonal
Immunogen:	A synthesized peptide derived from human PAK2
Formulation:	Supplied in PBS (pH 7.4) containing 50% glycerol, and 0.02% sodium azide.
Concentration:	Lot dependent
Purification:	Affinity Purified
Conjugation:	Unconjugated
Stability:	Store at -20 °C for one year.
Database Link:	Q13177
Synonyms:	EC 2.7.11; EC 2.7.11.1; Gamma-PAK; KNO2; P21 (CDKN1A)-Activated Kinase 2; P21 (RAC1) Activated Kinase 2; P21 Protein (Cdc42/Rac)-Activated Kinase 2; P21-Activated Kinase 2; P58; PAK-2; PAK2; PAK65; PAKGAMMA; PAKgamma; S6/H4 Kinase; Serine/Threonine-Protein Kinase PAK 2

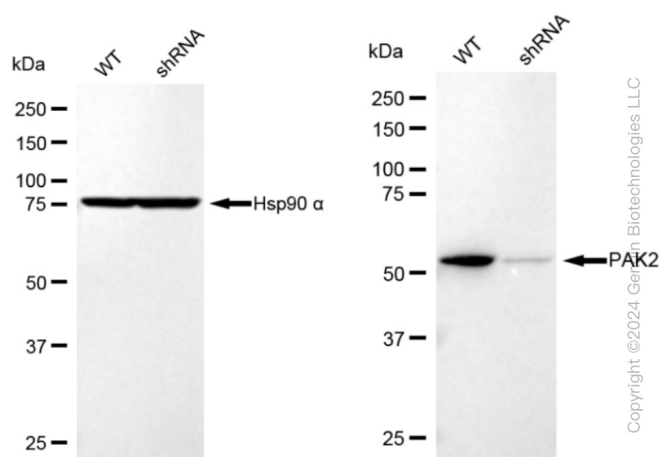


[View online »](#)

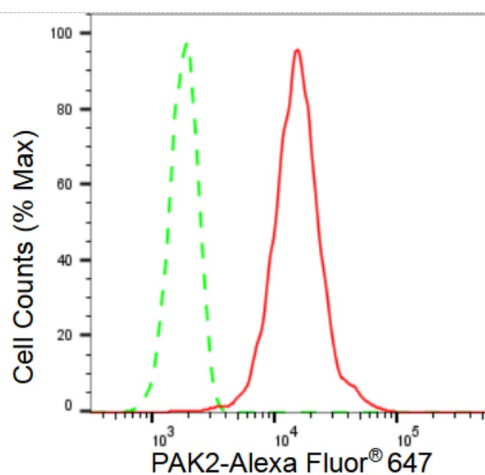
Product images:



Western blotting analysis using anti-PAK2 antibody . Total cell lysates (30 µg) from various cell lines were loaded and separated by SDS-PAGE. The blot was incubated with anti-PAK2 antibody and HRP-conjugated goat anti-rabbit secondary antibody respectively. Image was developed using anti-FeQ™ ECL Substrate Kit .

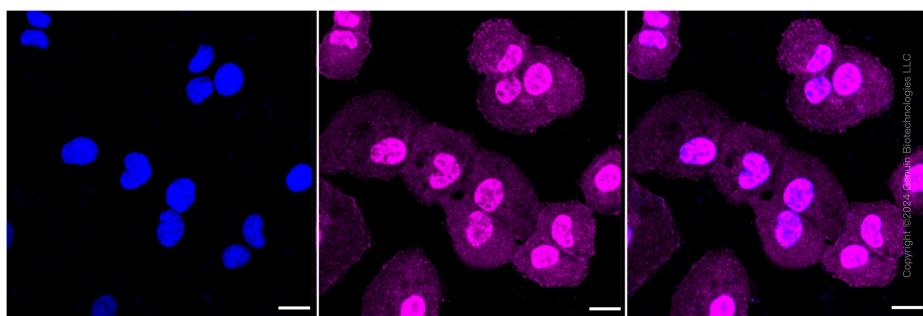


Western blotting analysis using anti-PAK2 antibody . PAK2 expression in wild type (WT) and PAK2 shRNA knockdown (KD) HeLa cells with 30 µg of total cell lysates . Hsp90 α serves as a loading control. The blot was incubated with anti-PAK2 antibody and HRP-conjugated goat anti-rabbit secondary antibody respectively. Image was developed using anti-FeQ™ ECL Substrate Kit .



Copyright ©2024 Genun Biotechnologies LLC

Flow cytometric analysis of PAK2 expression in HT-1080 cells using anti-PAK2 antibody . Green, isotype control; red, PAK2.



Immunocytochemical staining of HT-1080 cells with PAK2 antibody . Nuclei were stained blue with DAPI; PAK2 was stained magenta with Alexa Fluor® 647. Images were taken using anti-Leica stellaris 5. Protein abundance based on laser Intensity and smart gain: High. Scale bar: 20 µm.