

Product datasheet for **TA425027**

OLFM4 Rabbit Monoclonal Antibody [Clone ID: 24GB680]

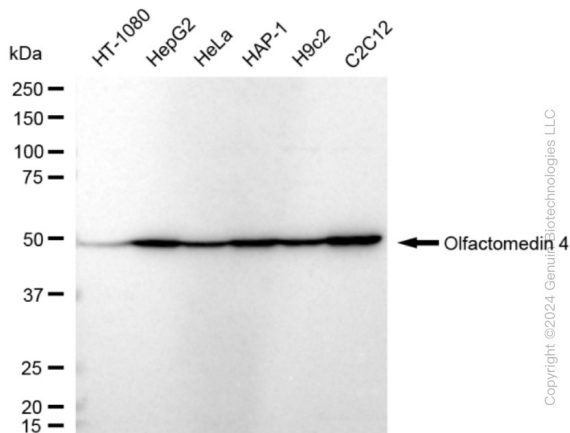
Product data:

Product Type:	Primary Antibodies
Clone Name:	24GB680
Applications:	FC, ICC, WB
Recommended Dilution:	Western Blotting (WB): 1:1,000-1:5,000, Flow Cytometry (FCM): 1:2,000, Immunocytochemistry (IC): 1:100-1:1,000
Reactivity:	Human, Mouse, Rat
Host:	Rabbit
Isotype:	IgG
Clonality:	Monoclonal
Immunogen:	A synthesized peptide derived from human OLFM4
Formulation:	Supplied in PBS (pH 7.4) containing 50% glycerol, and 0.02% sodium azide.
Concentration:	Lot dependent
Purification:	Affinity Purified
Conjugation:	Unconjugated
Stability:	Store at -20 °C for one year.
Database Link:	Q6UX06
Synonyms:	Antiapoptotic Protein GW112; BA209J19.1; G-CSF-Stimulated Clone 1 Protein; GC1; GW112; HGC-1; HOLfD; Olfactomedin-4; Olfactomedin 4; OlfD; OLM4; UNQ362

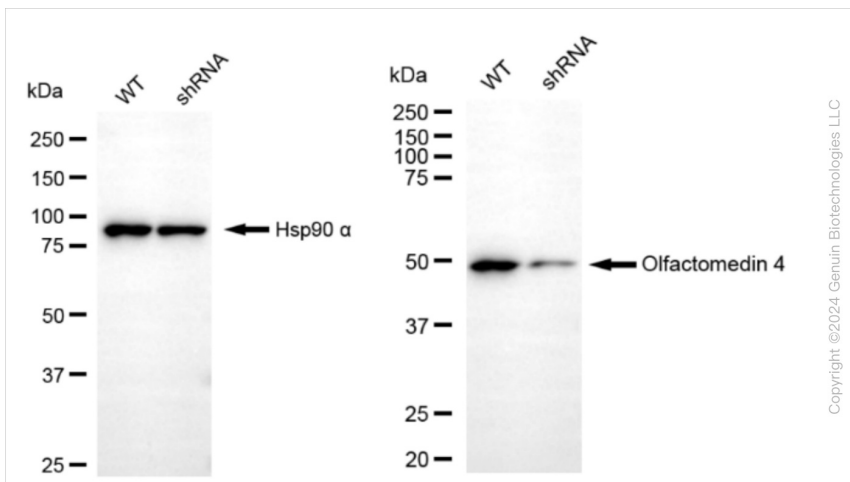


[View online »](#)

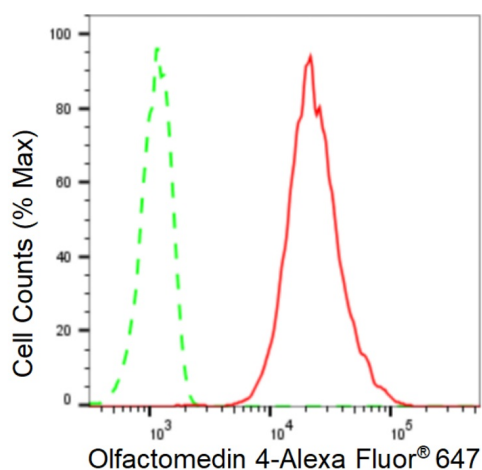
Product images:



Western blotting analysis using anti-Olfactomedin 4 antibody . Total cell lysates (30 µg) from various cell lines were loaded and separated by SDS-PAGE. The blot was incubated with anti-Olfactomedin 4 antibody and HRP-conjugated goat anti-rabbit secondary antibody respectively. Image was developed using anti-FeQ™ ECL Substrate Kit .

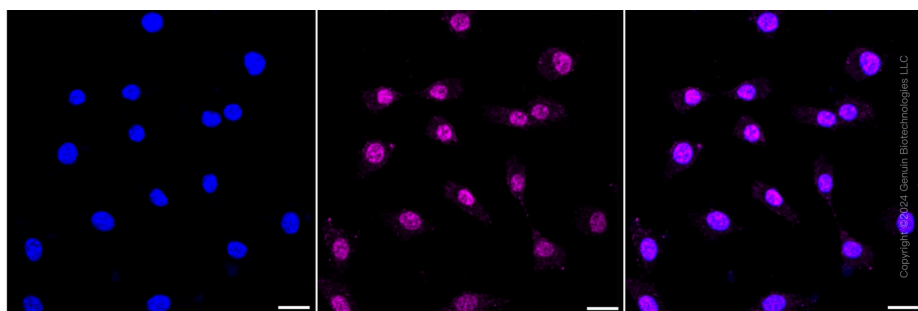


Western blotting analysis using anti-Olfactomedin 4 antibody . Olfactomedin 4 expression in wild type (WT) and Olfactomedin 4 shRNA knockdown (KD) HeLa cells with 20 µg of total cell lysates . Hsp90 α serves as a loading control. The blot was incubated with anti-Olfactomedin 4 antibody and HRP-conjugated goat anti-rabbit secondary antibody respectively. Image was developed using anti-NaQ™ ECL Substrate Kit .



Copyright ©2024 Genuin Biotechnologies LLC

Flow cytometric analysis of Olfactomedin 4 expression in C2C12 cells using anti-Olfactomedin 4 antibody. Green, isotype control; red, Olfactomedin 4.



Immunocytochemical staining of C2C12 cells with anti-Olfactomedin 4 antibody. Nuclei were stained blue with DAPI; Olfactomedin 4 was stained magenta with Alexa Fluor® 647. Images were taken using anti-Leica stellaris 5. Protein abundance based on laser Intensity and smart gain: High. Scale bar: 20 μ m.