

Product datasheet for **TA425006**

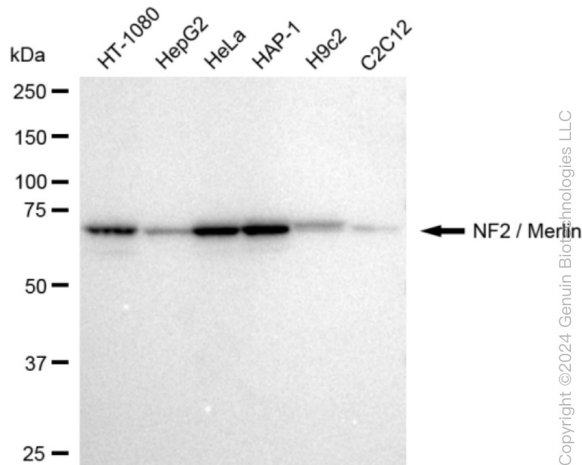
NF2 Rabbit Monoclonal Antibody [Clone ID: 23GB2620]

Product data:

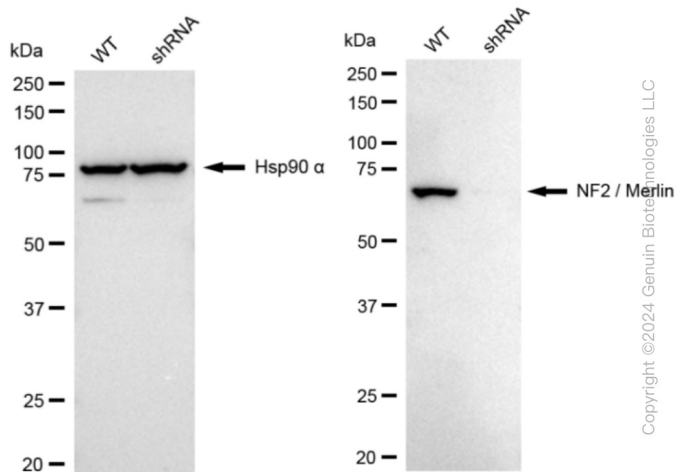
Product Type:	Primary Antibodies
Clone Name:	23GB2620
Applications:	FC, ICC, WB
Recommended Dilution:	Western Blotting (WB): 1:1,000-1:5,000, Flow Cytometry (FCM): 1:2,000, Immunocytochemistry (IC): 1:100-1:1,000
Reactivity:	Human, Mouse, Rat
Host:	Rabbit
Isotype:	IgG
Clonality:	Monoclonal
Immunogen:	A synthesized peptide derived from human NF2 / Merlin
Formulation:	Supplied in PBS (pH 7.4) containing 50% glycerol, and 0.02% sodium azide.
Concentration:	Lot dependent
Purification:	Affinity Purified
Conjugation:	Unconjugated
Stability:	Store at -20 °C for one year.
Database Link:	P35240
Synonyms:	ACN; BANF; Bilateral Acoustic Neurofibromatosis; MERLIN; Merlin; MERLIN-1; Merlin-1; Moesin-Ezrin-Radixin-Like Protein; Moesin-Ezrin-Radixin Like; Moesin-Ezrin-Radixin-Like Protein; Neurofibromin-2; Neurofibromin 2 (Bilateral Acoustic Neuroma); Neurofibromin 2 (Merlin); NF2; NF2, Moesin-Ezrin-Radixin Like (MERLIN) Tumor Suppressor; SCH; Schwannomerlin; Schwannomin; SWNV

[View online »](#)

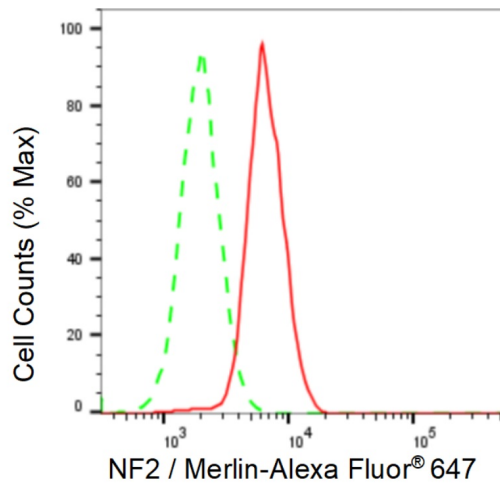
Product images:



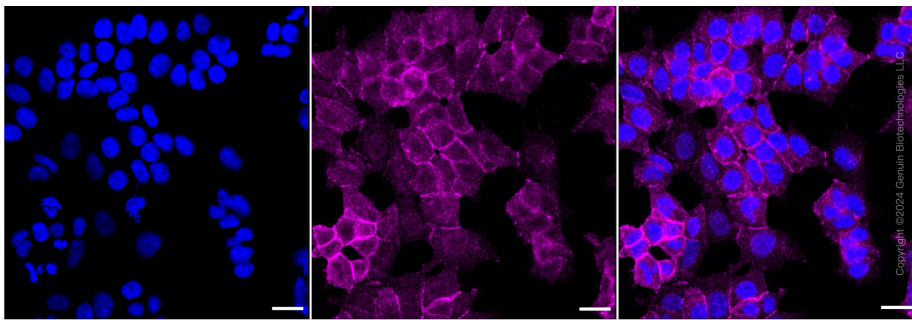
Western blotting analysis using anti-NF2 / Merlin antibody . Total cell lysates (30 µg) from various cell lines were loaded and separated by SDS-PAGE. The blot was incubated with anti-NF2 / Merlin antibody and HRP-conjugated goat anti-rabbit secondary antibody respectively. Image was developed using anti-FeQ™ ECL Substrate Kit .



Western blotting analysis using anti-NF2 / Merlin antibody . NF2 / Merlin expression in wild type (WT) and NF2 / Merlin shRNA knockdown (KD) HeLa cells with 20 µg of total cell lysates. Hsp90 α serves as a loading control. The blot was incubated with anti-NF2 / Merline antibody and HRP-conjugated goat anti-rabbit secondary antibody respectively. Image was developed using anti-NaQ™ ECL Substrate Kit .



Flow cytometric analysis of NF2 / Merlin expression in HAP-1 cells using anti-NF2 / Merlin antibody . Green, isotype control; red, NF2 / Merlin.



Immunocytochemical staining of HAP-1 cells with NF2 / Merlin antibody . Nuclei were stained blue with DAPI; NF2 / Merlin was stained magenta with Alexa Fluor® 647. Images were taken using anti-Leica stellaris 5. Protein abundance based on laser Intensity and smart gain: Medium. Scale bar: 20 µm.